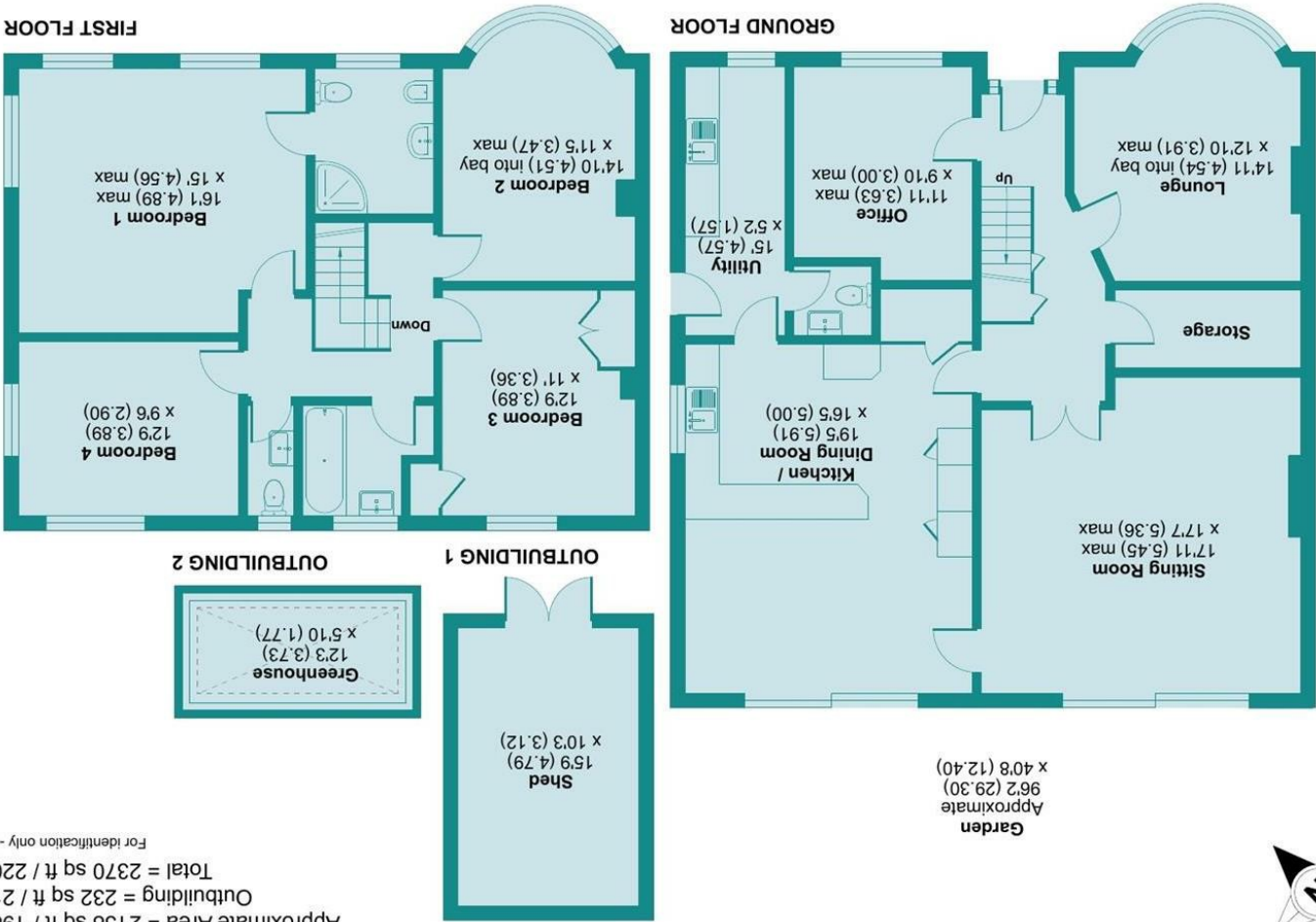


Produced for James Estate Agents. REF: 1296197
Incorporating International Property Measurement Standards (IPMS2 Residential). © nichcom 2025.



Canterbury Way, Rickmansworth, WD3 3SS

Approximate Area = 2138 sq ft / 198.6 sq m
Outbuilding = 232 sq ft / 21.6 sq m
Total = 2370 sq ft / 220.2 sq m

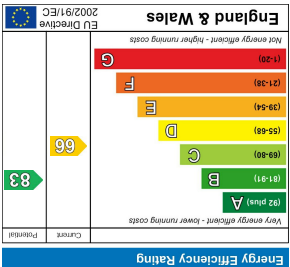
For identification only - Not to scale

LOCAL AUTHORITY
Three Rivers District Council

TENURE
Freehold

COUNCIL TAX BAND
E

VIEWS
By prior appointment only



Agents Note: Whilst every care has been taken to prepare these particulars, they are for guidance purposes only. All measurements are approximate and are for general guidance purposes only and whilst every care has been taken to ensure their accuracy, they should not be relied upon and potential buyers/tenants are advised to recheck the measurements



PROPERTY SUMMARY

This delightful double fronted four bed semi-detached house on Canterbury Way offers a perfect blend of comfort and convenience. With four double bedrooms, this property is ideal for families seeking a spacious home. The two inviting reception rooms plus a kitchen/diner and an office provide ample space for relaxation and entertaining. In addition there is a utility room and downstairs WC. The property features a well-appointed bathroom, plus an en-suite to the principle bedroom. The beautiful 96 foot garden has a patio, lawn with borders, greenhouse and shed. Additionally, the house benefits from parking for three vehicles. Croxley Green is known for its picturesque surroundings and community spirit, making it an excellent choice for those looking to settle in a friendly neighbourhood. With local amenities, schools, and parks nearby, this home is perfectly positioned for both convenience and leisure.

4



2



2



