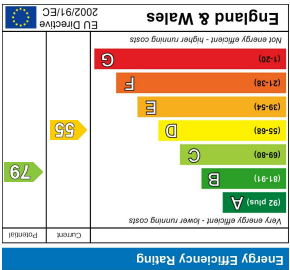


Agents Note: Whilst every care has been taken to prepare these particulars, they are for guidance purposes only. All measurements are approximate and are for general guidance purposes only and whilst every care has been taken to ensure their accuracy, they should not be relied upon and potential buyers/tenants are advised to recheck the measurements



LOCAL AUTHORITY
Three Rivers District Council

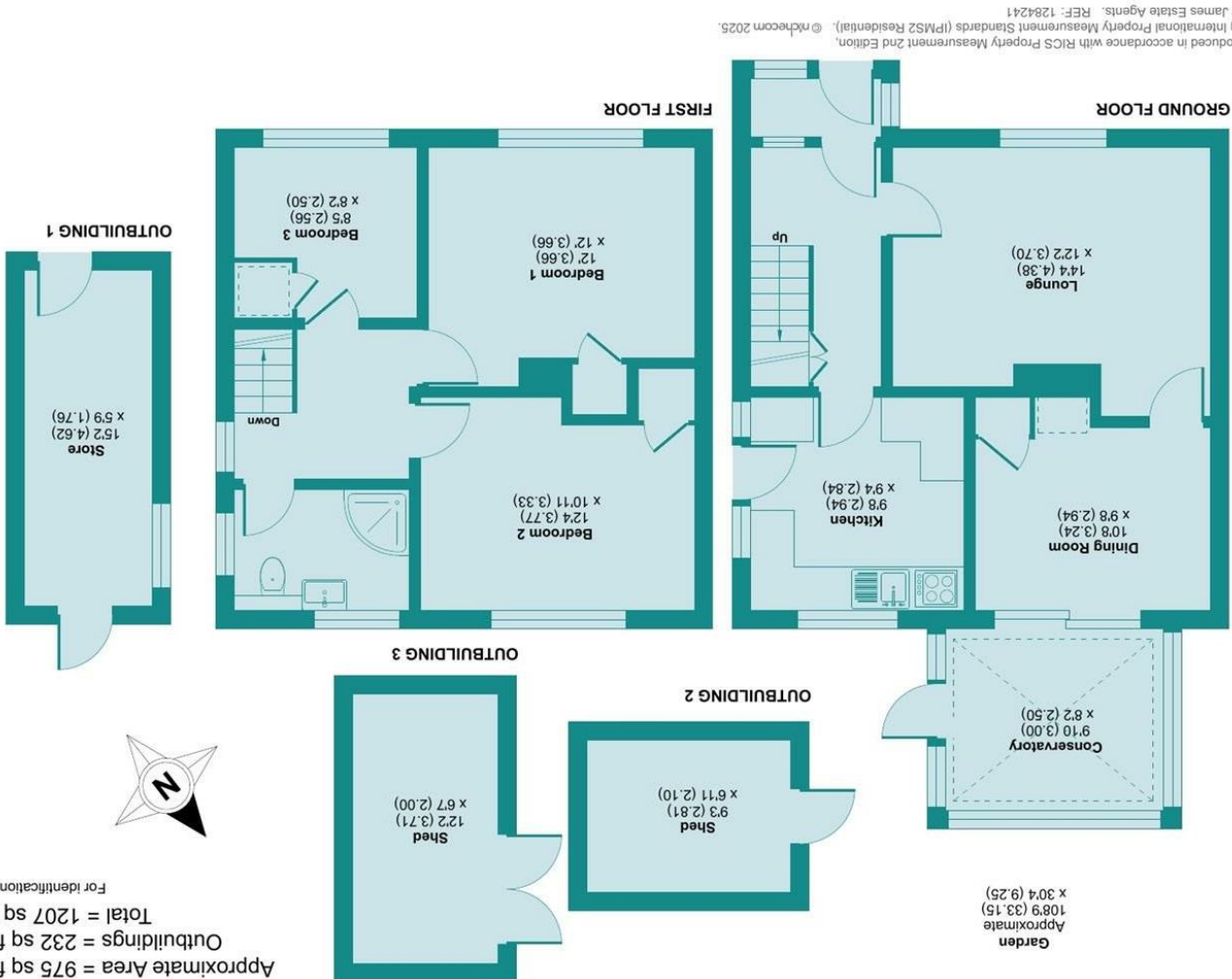
TENURE
Freehold

COUNCIL TAX BAND
C

VIEWS
By prior appointment only

Lovatts, Croxley Green, Rickmansworth, WD3 3JR

Approximate Area = 975 sq ft / 90.5 sq m
Outbuildings = 232 sq ft / 21.5 sq m
Total = 1207 sq ft / 112 sq m
For identification only - Not to scale



GUIDE PRICE
£580,000
LOVATTS
CROXLEY GREEN, RICKMANSWORTH, WD3 3JR

PROPERTY SUMMARY

NO UPPER CHAIN. Three bedroom semi detached in quiet cul de sac location just off Baldwins Lane. Accommodation includes; porch, hallway, two receptions plus conservatory and kitchen on the ground floor. The first floor has two double bedrooms, one single and a shower room. Outside there is a small garden to the front (with access onto a public footpath) and a large garden to the rear. Situated in walking distance to local amenities, schools and the village green. Potential to update and extend, subject to local planning consent.

3



1



2

