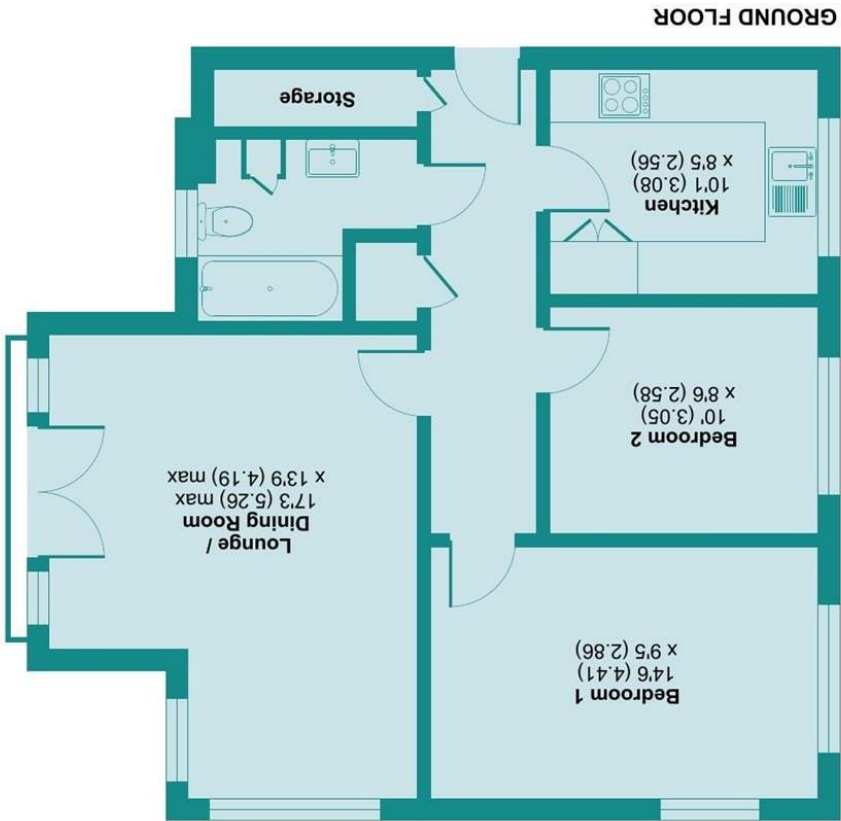


Produced for James Estate Agents. REF: 1284223  
Incorporating International Property Measurement Standards (IPMS2 Residential). © nichcom 2025.



Approximate Area = 696 sq ft / 64.6 sq m  
For identification only - Not to scale

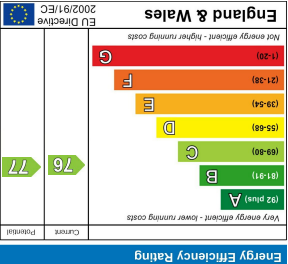
St. Mawes Close, Croxley Green, Rickmansworth, WD3 3GH

LOCAL AUTHORITY  
Three Rivers District Council

TENURE  
Leasehold

COUNCIL TAX BAND  
C

VIEWS  
By prior appointment only



Agents Note: Whilst every care has been taken to prepare these particulars, they are for guidance purposes only. All measurements are approximate and are for general guidance purposes only and whilst every care has been taken to ensure their accuracy, they should not be relied upon and potential buyers/tenants are advised to recheck the measurements





PROPERTY SUMMARY

Welcome to this stylish, well presented, 2 bedroom ground floor apartment located in the desirable St. Mawes Close, Croxley Green. Nestled within a tranquil cul-de-sac on the exclusive Merchants Taylors development. Spanning an impressive 696 square feet, accommodation includes, hallway with storage, modern appliance fitted kitchen, lounge/diner, two double bedrooms and a contemporary bathroom. Additional highlights include gas central heating and double glazing. The property also benefits from two allocated parking spaces. Residents can enjoy the beautifully maintained communal grounds and have access to the developments tennis courts. This apartment, built in 2012 can be purchased on a shared ownership basis, subject to approval by Hightown Homes. In summary, this delightful apartment in Croxley Green is an excellent choice for those seeking a modern, well-located home with ample amenities and a welcoming community atmosphere..

2



1



1

