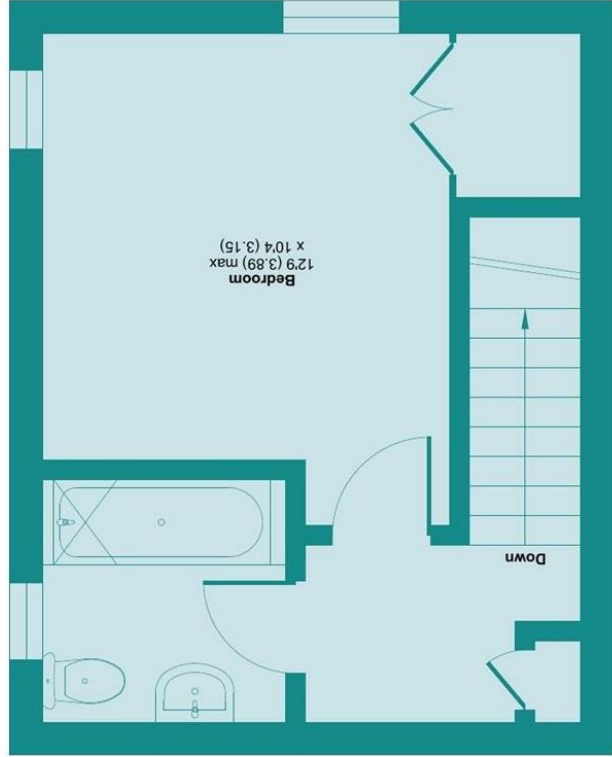
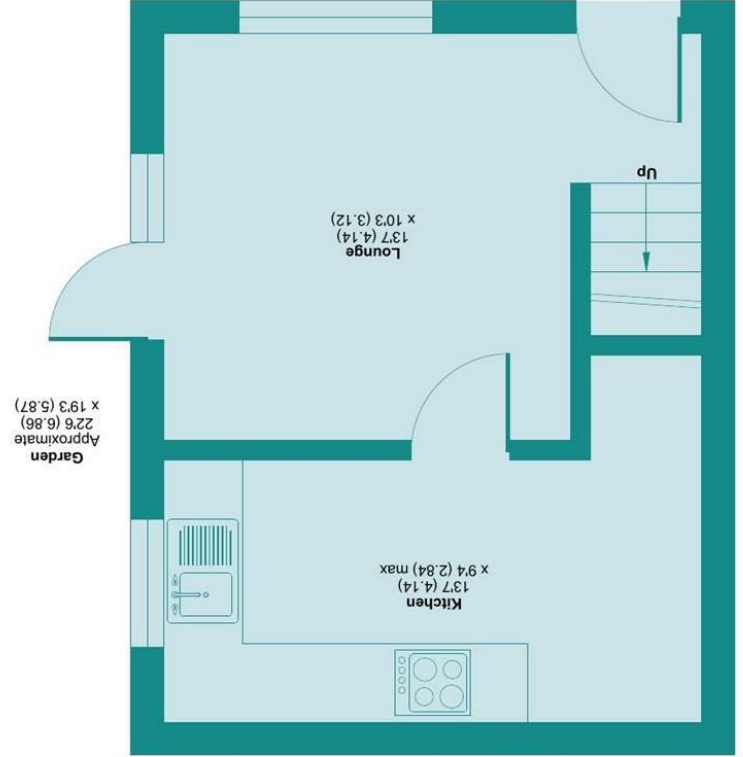


Certified Property Measurement
RICS
Floor plan produced in accordance with RICS Property Measurement Standards incorporating International Property Measurement Standards (IPMS2 Residential). © nhd.com 2024. Produced for James Estate Agents. REF: 1070423

FIRST FLOOR



GROUND FLOOR



Approximate Area = 478 sq ft / 44.4 sq m
For identification only - Not to scale

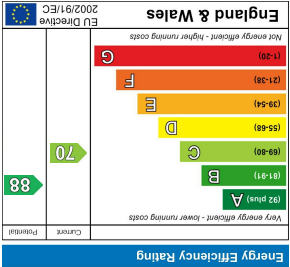
Byewaters, Watford, WD18

LOCAL AUTHORITY
Three Rivers District Council

TENURE
Freehold

COUNCIL TAX BAND
C

VIEWS
By prior appointment only



Agents Note: Whilst every care has been taken to prepare these particulars, they are for guidance purposes only. All measurements are approximate and are for general guidance purposes only and whilst every care has been taken to ensure their accuracy, they should not be relied upon and potential buyers/tenants are advised to recheck the measurements



GUIDE PRICE
£310,000
BYEWATERS
WATFORD, WD18 8WJ

PROPERTY SUMMARY

NO UPPER CHAIN. A freehold one bed Canal side semi house situated in the quiet Byewaters estate with easy access to Croxley Met station. Suitable for first time buyer or Investor. The house is in need of updating but priced accordingly. The accommodation offers a living room with patio door to the private garden, fitted kitchen with space for a small dining table, upstairs there is a double bedroom and a bathroom. Gas heating, allocated parking and private enclosed garden. Service Charge: £92.50 twice a year. This covers footpaths, lighting, garden maintenance of communal areas

1



1



1

