



GUIDE PRICE

**£665,000**

**Sherborne Way**

Croxley Green, WD3 3PE

## PROPERTY SUMMARY

**NO UPPER CHAIN.** This stylish three bed semi-detached chalet bungalow offers a delightful blend of modern living and traditional charm. A short walk from the village centre, good schools and Met line station. As you step inside, you are greeted a recently refurbished ground floor that seamlessly combines the kitchen, dining area, and lounge into a spacious open-plan layout - ideal for entertaining guests or simply relaxing with your loved ones. The ground floor also features a double bedroom to the front and a cloakroom providing convenience and flexibility for your living arrangements. On the first floor are two further bedrooms and a modern family bathroom. One of the standout features of this property is the south-facing landscaped garden, perfect for enjoying sunny days and al fresco dining. Off street parking for a number of vehicles and a separate garage accessed by gates, providing security and convenience.

3



1



1





# Sherborne Way, Croxley Green, Rickmansworth, WD3 3PE

**LOCAL AUTHORITY**  
Three Rivers District Council

Approximate Area = 1006 sq ft / 93.4 sq m  
 Limited Use Area(s) = 13 sq ft / 1.2 sq m  
 Garage = 138 sq ft / 12.8 sq m  
 Total = 1157 sq ft / 107.4 sq m  
 For identification only - Not to scale

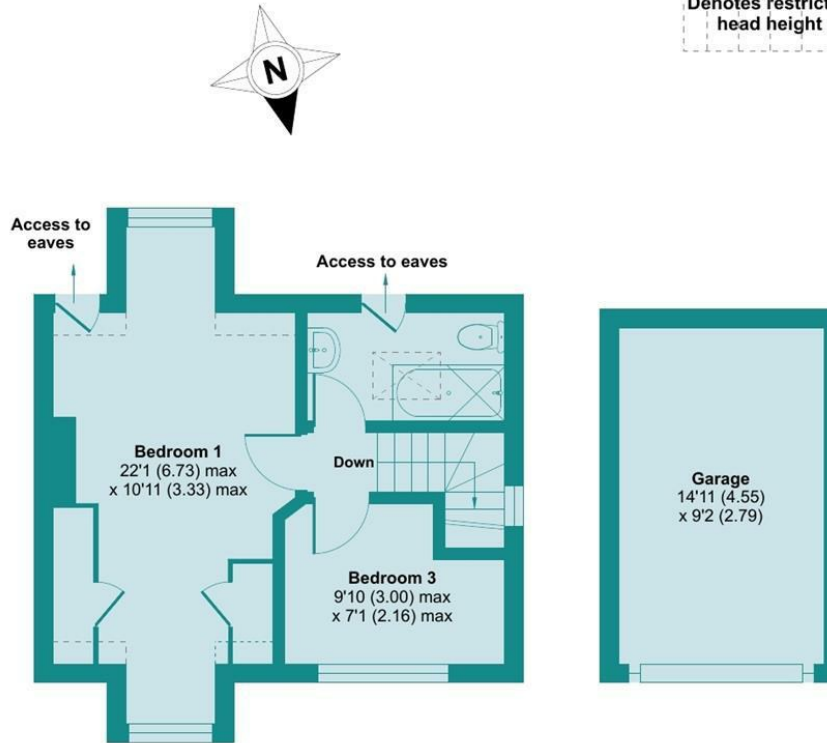
**TENURE**  
Freehold

**COUNCIL TAX BAND**  
E

**VIEWINGS**  
By prior appointment only

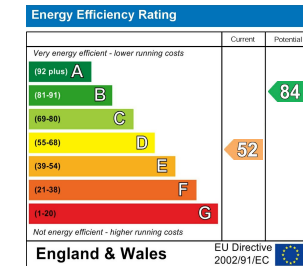


**GROUND FLOOR**



**FIRST FLOOR**

Denotes restricted head height



Agents Note: Whilst every care has been taken to prepare these particulars, they are for guidance purposes only. All measurements are approximate and are for general guidance purposes only and whilst every care has been taken to ensure their accuracy, they should not be relied upon and potential buyers/tenants are advised to recheck the measurements



Floor plan produced in accordance with RICS Property Measurement Standards incorporating International Property Measurement Standards (IPMS2 Residential). © nichecom 2024. Produced for James Estate Agents. REF: 1119667



**OFFICE ADDRESS**  
141 New Road  
Rickmansworth  
Hertfordshire  
WD3 3EN

**OFFICE DETAILS**  
01923 710500  
info@jamesestateagents.com  
https://www.jamesestateagents.com