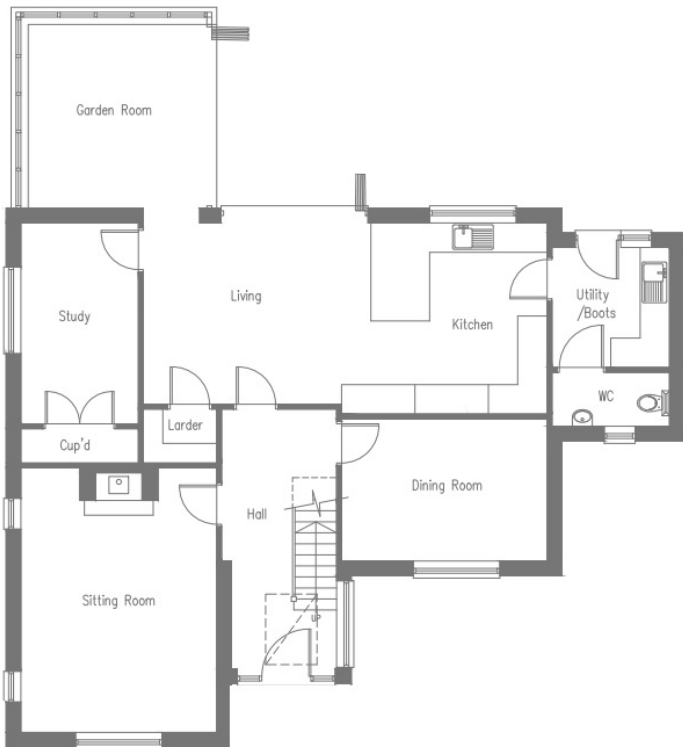


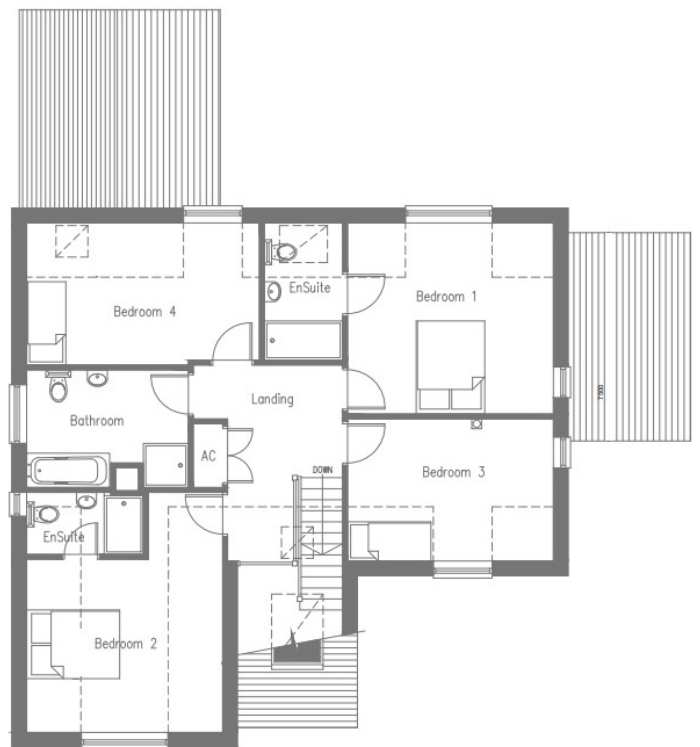


FOUR BEDROOM,  
**DETACHED HOME**

# Plot THREE



GROUND FLOOR



FIRST FLOOR

Floorplans shown are approximate measurements only. Exact layouts and sizes may vary. The dimensions are not intended to be used for carpet sizes, appliance sizes or items of furniture. Furniture layouts indicative only. Kitchen layout indicative only. Floorplans have been sized to fit the page, as a result this plan may not be at the same scale as plans on other brochures.

# The Street, Assington



jhjjj'lgnsicidem fugitate pellupti inusdaest aut faccuscia consequi doluptaque quam, quatis dolore dit vellum ad ut laborpor solupti onseditinus mos sa et aut la net aut optur, tem lit ea porporeiusto to blate lacernam, sinci tem. Epelloratem. Sequi bla porrorpos accabo. Itas ma quo consequi unt apis nonsequi solecatur? Qui omnis mo consequiat. Ildit, voleni di dolores esequis ressed molupta veliber iaesequodit odi omnient magnam, ommolum et od et el in porae. Soluptatio. Abor sedio doles sit, te as excea doluptatur sitam,

nem vollatiati dolor re, anducient omnimperum nimostium as con conectiscid quam que prae natibus. Boreniet as aut lab incto estibus, essimusto maiorerum quosam atasincur sa num apereicienem fugit, que nienisti aut faccuptinum rere volupti aspient vel es accab inullant. Ommo quae ium con enihillam ea quibusa que pero omni volla dolore, quo eos molo doluptaest, consequam expelecto blaborecatis mo tessuntem eos doluptas dolupta tecabor sedi rerirosae et

## GROUND FLOOR

### LIVING/ DINING AREA

18"2' x 12"1'

### KITCHEN AREA

13"7' x 12"1'

### SITTING AREA

17"7' x 13"1'

### SNUG/ STUDY

13"7' x 10"2'

### UTILITY

12"1' x 8"0'

## FIRST FLOOR

### BEDROOM ONE

13"7' x 12"8'

### BEDROOM TWO

13"1' x 17"6' Max

### BEDROOM THREE

13"7' x 9"5'

### BEDROOM FOUR

15"5 x 9"5'

### BATHROOM

6"5' x 10"8

Plot **THREE**

THE STREET, **ASSINGTON**

01787 468400 • [sudbury@bychoice.co.uk](mailto:sudbury@bychoice.co.uk) • [bychoice.co.uk](http://bychoice.co.uk)

**Bychoice**  
ESTATE AGENTS