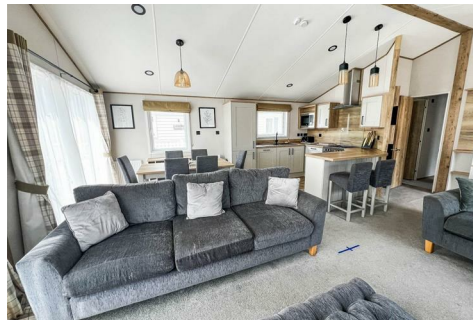




LAMB & CO

Call us on 01255 422 240
Inspired by property, driven by passion.



LOW ROAD, HARWICH, CO12 3TZ

PRICE £129,995

Located on Dovercourt Holiday Park offering extensive on site amenities and located close to sandy beaches making this an ideal holiday home or holiday let. The lodge is offered in excellent condition including three bedrooms, fully furnished and with a large veranda.

- Three Bedroom Lodge
 - 2022 Model
- Popular Park with Excellent Facilities
 - Fully Furnished/Equipped
- Close to Dovercourt Beach
 - 11.5 Month Season



Sales | Lettings | Commercial | Land & New Homes
sales@lambandcoproperty.co.uk | www.lambandcoproperty.co.uk

THE PARK

Enjoy coastal walks, and beach days in the Essex sunshine from Dovercourt Holiday Park or explore the area's rich history with the charming town of Harwich just minutes away. Plus, with an array of superb on-park facilities at your fingertips, you'll never tire of visiting this incredible place.

On site facilities include:

- Family Friendly Clubhouse & Restaurant
- Play Park
- Indoor Pool with water slide (heated)
- Outdoor Pool
- Sports Courts
- On-site Shop
- Amusement Arcade
- Crazy Golf

MODEL

2022 Willerby Sierra (38' x 12')

LIVING SPACE



KITCHEN AREA



BEDROOM ONE

EN-SUITE

BEDROOM TWO



BEDROOM THREE



BATHROOM



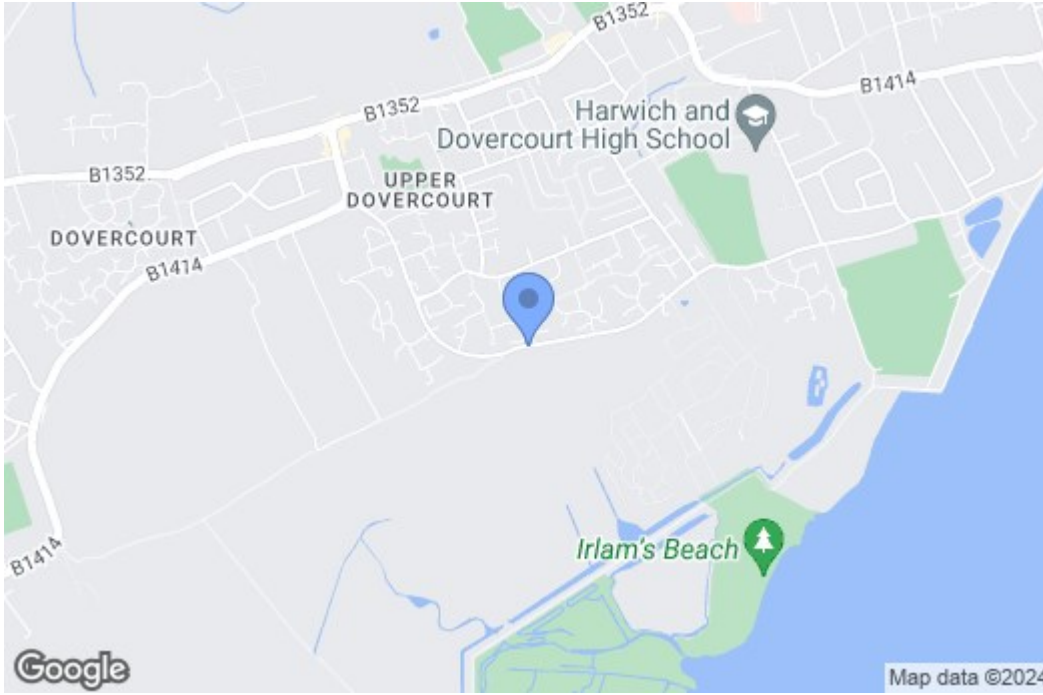
SEASON

Ownership Season Dates:
01/03/2024 - 14/02/2025

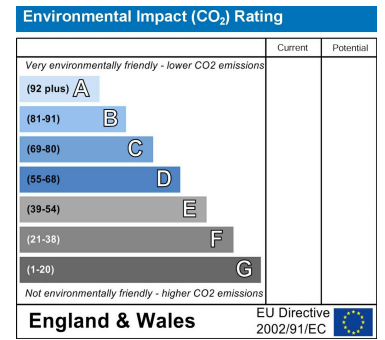
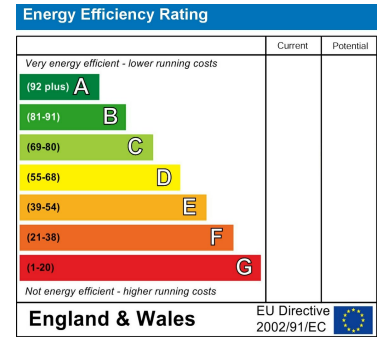
FEES

Annual site fees - APPROX £4000

Map



EPC Graphs



Floorplan

These particulars, whilst believed to be accurate are set out as a general outline only for guidance and do not constitute any part of an offer or contract. Intending purchasers should not rely on them as statements of representation of fact, but must satisfy themselves by inspection or otherwise as to their accuracy. No person in this firm's employment has the authority to make or give any representation or warranty in respect of the property.