



MAY WHETTER & GROSE

305 MANOR VIEW, PAR, PL24 2EP
GUIDE PRICE £275,000



LOCATED A SHORT DISTANCE FROM PAR BEACH, LUXULYAN VALLEY AND WITHIN EASY REACH OF SCHOOLS AND LOCAL AMENITIES. TUCKED AWAY AT THE END OF A SMALL SELECT CUL-DE-SAC IN THE MUCH SOUGHT AFTER POPULAR DEVELOPMENT OF MANOR VIEW. THIS SEMI DETACHED FAMILY RESIDENCE BENEFITS FROM LOW MAINTENANCE SUNNY ASPECT PRIVATE REAR GARDEN WITH LARGE GARAGE. VIEWING IS HIGHLY RECOMMENDED TO APPRECIATE ITS POSITION AND WONDERFUL PRESENTATION. EPC - C



Location

Par is an extremely popular area with an excellent range of local amenities including library, chemist, super market, post office, general stores, public houses and mainline railway station. There are 2 Primary schools within easy reach and a large sandy beach. The town of Fowey is approximately 4 miles away and is well known for its restaurants and coastal walks. The picturesque port of Charlestown and the award winning Eden Project are within a short drive. The Cathedral city of Truro is approximately 20 miles from the property. A wide range of facilities can be found in the nearby town of St Austell. There is a mainline railway station and leisure centre together with primary and secondary schools and supermarket.

Directions

From St Austell head out onto the A390 to St Blazey Gate, by the Four Lords Pub on the right hand side turn right onto Trenovissick Road. Head down to the bottom taking the turning right into Manor View. Follow the road up over the mini roundabout, taking the next right hand turn and then immediately left into the cul-de-sac where the property will be located at the far end.

Accommodation

All measurements are approximate, show maximum room dimensions and do not allow for clearance due to limited headroom.

The driveway is to the right hand side. There is a paved front pathway with handrail leading to the part obscure double glazed panel door with outside courtesy lighting.

Entrance Hall



With large embedded welcome mat with further carpeted flooring continuing up onto the staircase. Doors through into the main living area and one into cloakroom/WC.

Cloakroom/WC



Comprises hand basin, tiled splashback. Low level WC. Radiator. High level obscure double glazed window with deep display sill. Finished with tile effect flooring covering.

Reception Room

11'7" x 15'4" - maximum (3.55 x 4.69 - maximum)



Finished with a light painted wall surround and carpeted flooring. Large double glazed window with radiator beneath. Doors into the kitchen/diner to the rear and one into large under stairs storage.



Kitchen/Diner

14'10" x 8'7" - maximum (4.53 x 2.64 - maximum)

Handrails to both side of the stair case turning to the first floor landing. Access through to the loft and doors into all three bedrooms and family bathroom.

Principal Bedroom

12'1" x 14'10" - maximum into recess (3.69 x 4.54 - maximum into recess)



Finished with a tile effect floor covering. Double doors with glazed panels opening out onto the low maintenance sunny aspect rear garden with double glazed window within the kitchen area. The kitchen comprises a range of light wood fronted wall and base units complimented with roll top laminated work surface and attractive tiled splashback. Gas hob with extractor over and integrated oven beneath. Further under unit space and space for additional white good appliances. White one and half bowl sink and drainer with mixer tap. Additional wall mounted radiator within the dining area.

Two double glazed windows to the front, one with radiator beneath. Additional door into over stairs storage and airing cupboard.

Family Bathroom

6'10" x 5'6" (2.10 x 1.68)



Currently comprising hand basin, low level WC and raised shower tray into cubicle with wall mounted system. Part tiled wall surround and within the shower, polished marble effect bath sheet panels, all complimented by mosaic tile effect floor covering. Wall mounted radiator. Obscure double glazed window.

Bedroom

8'7" x 7'2" - maximum (2.63 x 2.20 - maximum)



Double glazed window with radiator beneath enjoying an outlook down over the garden.

Bedroom

8'10" x 6'0" (2.71 x 1.83)



Enjoying a similar outlook from a double glazed window with radiator beneath.

Outside



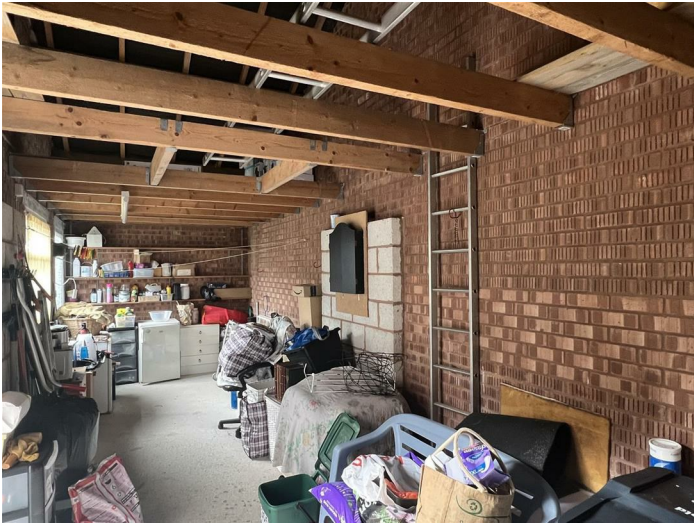
A low privet style hedge with stone pebbled front garden area. Low level picket fence with tarmac driveway to the side giving access to the garage and garden. The rear garden can also be accessed via the double doors from the dining area.



A tiered paved patio area with planted borders enclosed by fence panelling and the garage.

Garage

9'1" x 26'2" (2.77 x 7.99)



Two doors and window. Both power and light. A large garage. Up and over door to the front and eaves storage.

Council Tax Band - B

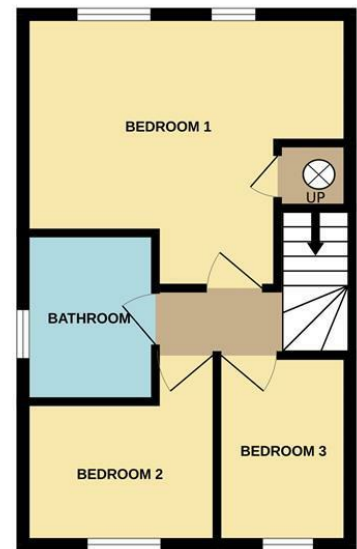
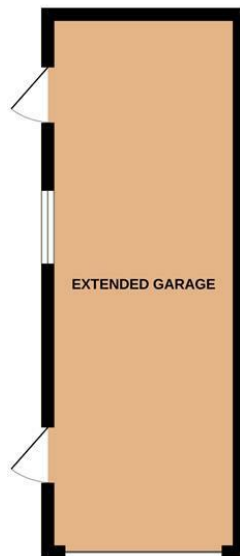
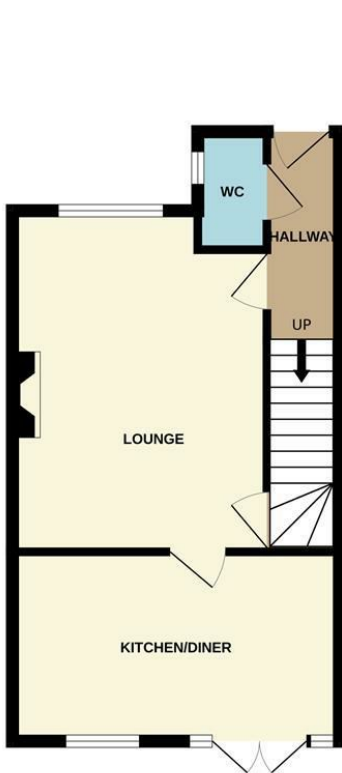
Energy Efficiency Rating		Current	Potential
Very energy efficient - lower running costs			
(92 plus) A			85
(81-91) B			
(69-80) C		71	
(55-68) D			
(39-54) E			
(21-38) F			
(1-20) G			
Not energy efficient - higher running costs			
England & Wales		EU Directive 2002/91/EC	

Environmental Impact (CO ₂) Rating		Current	Potential
Very environmentally friendly - lower CO ₂ emissions			
(92 plus) A			
(81-91) B			
(69-80) C			
(55-68) D			
(39-54) E			
(21-38) F			
(1-20) G			
Not environmentally friendly - higher CO ₂ emissions			
England & Wales		EU Directive 2002/91/EC	



GROUND FLOOR

1ST FLOOR



Whilst every attempt has been made to ensure the accuracy of the floorplan contained here, measurements of doors, windows, rooms and any other items are approximate and no responsibility is taken for any error, omission or mis-statement. This plan is for illustrative purposes only and should be used as such by any prospective purchaser. The services, systems and appliances shown have not been tested and no guarantee as to their operability or efficiency can be given.
Made with Metropix ©2024

Important Notice MISREPRESENTATION ACT 1989 and PROPERTY MISDESCRIPTIONS ACT 1991

Messrs. May, Whetter & Grose for themselves and for vendors and lessors of this property whose agents they are give notice that: (i) the particulars are set out as a general outline for the guidance of intended purchasers or lessees, and do not constitute, nor constitute part of, an offer or contract; ii) all descriptions, dimensions, reference to condition and necessary permissions for use and occupation, and other details are given without responsibility and any intending purchasers or tenants should not rely on them as statements or presentations of fact but must satisfy themselves by inspection or otherwise as to the correctness of each of them. (iii) no person in the employment of Messrs. May, Whetter & Grose has any authority to make or give any representation or warranty whatever in relation to the property.

