



MAY WHETTER & GROSE



24 FORE STREET, ST. AUSTELL, PL26 8AS
£95,000

WELL ESTABLISHED HAIR SALON BUSINESS AND PREMISES

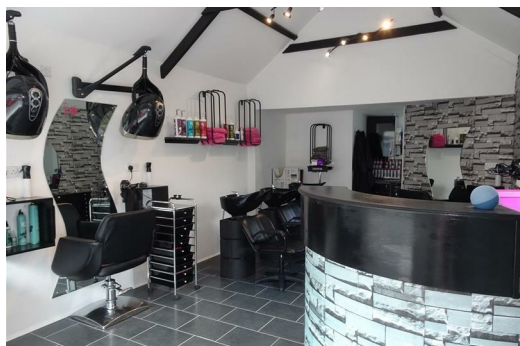
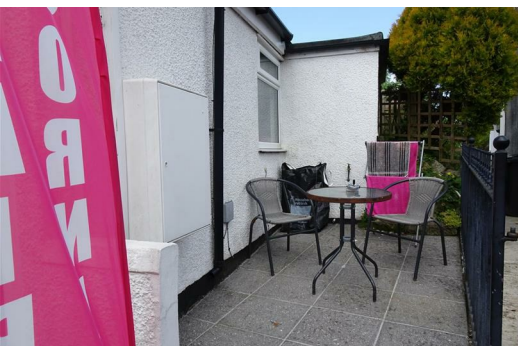
THE BUSINESS IS PROUD OF THE PROFESSIONAL AND PERSONAL SERVICE IT OFFERS TO ITS CLIENTS AND IS NOW READY TO BE PASSED ON FOR ITS NEXT CHAPTER DUE TO RETIREMENT.


LARGE CLIENT BASE AND A 'BUSINESS READY TO GO OPPORTUNITY'

ACCOUNTS & FIGURES AVAILABLE ON REQUEST.

THE VILLAGE OF ST DENNIS IS SITUATED WITHIN EASY ACCESS OF THE A30 AND OFFERS A WIDE RANGE OF AMENITIES INCLUDING A SHOP AND POST OFFICE, PUBLIC HOUSE, DOCTORS SURGERY, BANK AND PRIMARY SCHOOL. ST AUSTELL TOWN CENTRE IS SITUATED APPROXIMATELY 7 MILES AWAY AND OFFERS A WIDER RANGE OF SHOPPING, EDUCATIONAL AND RECREATIONAL FACILITIES.

EPC - AWAITING.



Energy Efficiency Rating		
	Current	Potential
Very energy efficient - lower running costs		
(92 plus) A		
(81-91) B		
(69-80) C		
(55-68) D		
(39-54) E		
(21-38) F		
(1-20) G		
Not energy efficient - higher running costs		
England & Wales	EU Directive 2002/91/EC	

Environmental Impact (CO ₂) Rating		
	Current	Potential
Very environmentally friendly - lower CO ₂ emissions		
(92 plus) A		
(81-91) B		
(69-80) C		
(55-68) D		
(39-54) E		
(21-38) F		
(1-20) G		
Not environmentally friendly - higher CO ₂ emissions		
England & Wales	EU Directive 2002/91/EC	