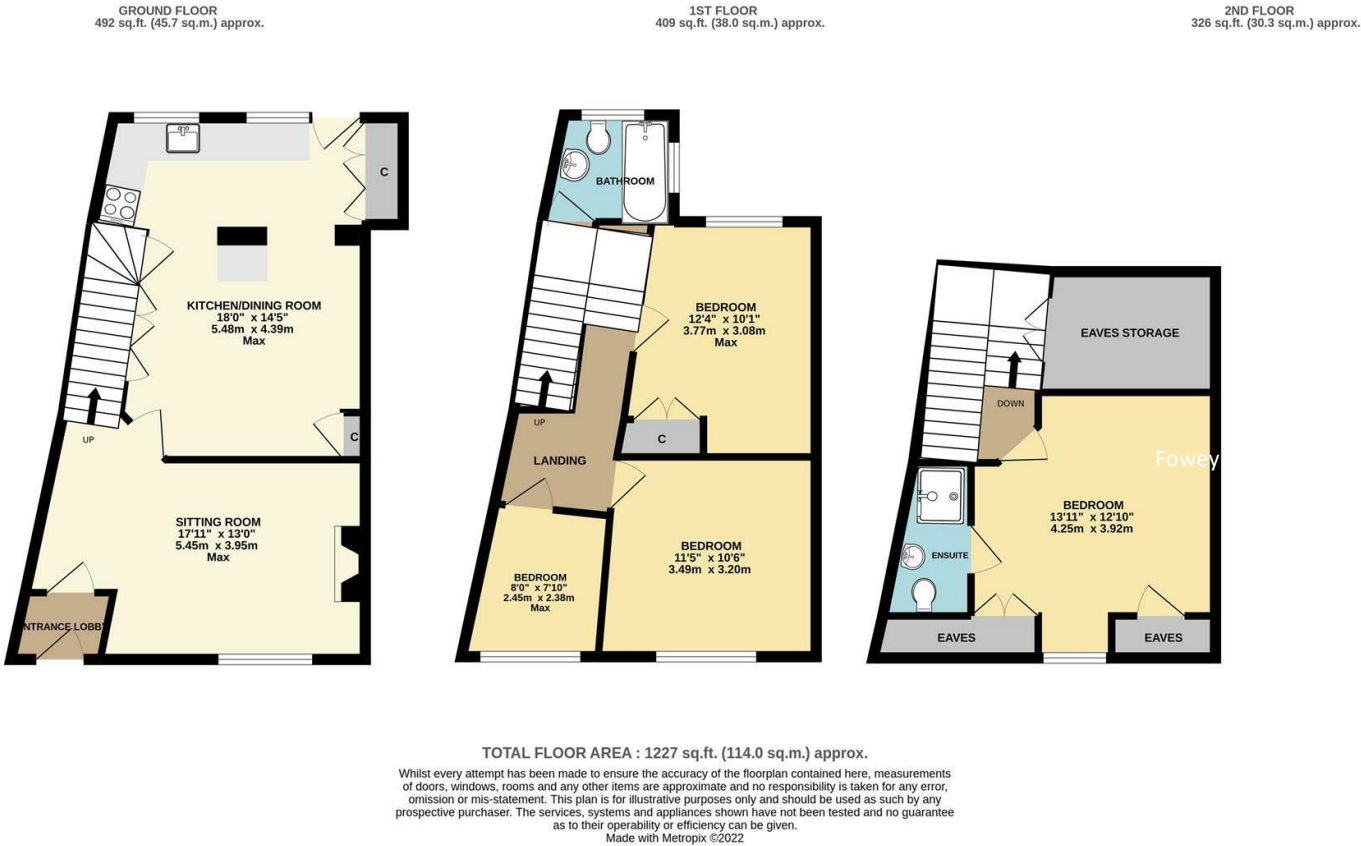




50 LOSTWITHIEL STREET,
FOWEY, PL23 1BG
GUIDE PRICE £450,000





50 Lostwithiel Street, Fowey, Cornwall, PL23 1BG

The Location

Fowey is regarded as one of the most attractive waterside communities in the county. Particularly well known as a popular sailing centre, the town has two thriving sailing clubs, a famous annual Regatta and excellent facilities for the keen yachtsman. For a small town Fowey provides a good range of shops and businesses catering for most day to day needs. The immediate area is surrounded by many miles of delightful coast and countryside much of which is in the ownership of the National Trust. Award winning restaurants, small boutique hotels, excellent public houses etc, have helped to establish Fowey as a popular, high quality, destination.

There are several excellent golf courses within easy reach, many world class gardens are to be found in the immediate area and the fascinating Eden Project with its futuristic biomes is just 5 miles to the north west.

There are good road links to the motorway system via the A38/A30. Railway links to London, Paddington, can be made locally at Par, and St. Austell and there are flights to London and other destinations from Newquay.

The Property

A lovely property situated close to the town centre with views over neighbouring roofs towards Place House and the harbour. Renovated by the current owners and currently run as a holiday let, this spacious house would suit as a main home or continue as a successful letting property.

Accommodation

The front door opens to the entrance hall area with wooden flooring and space for coats and shoes, which then leads through to the comfortable sitting room, with window to the front elevation and open fire set in an attractive hearth.

A doorway leads to the spacious dining area with tiled floor and storage cupboards to one side. This lovely area is open plan and incorporates the bespoke, well appointed kitchen with large windows offering lovely views across to Place House and to the harbour. There is ample storage space with a range of base and wall units, range style 2 oven cooker, plumbing and space for dishwasher and washing machine. A door leads from the kitchen area to the rear terrace, with space for table and chairs.



Stairs lead to the first floor, where there are two double bedrooms and a single bedroom. A family bathroom is located to the rear of the first floor, with panelled bath and shower over. Large windows offer lovely town and harbour views.

From the landing, stairs lead to the second floor, where there is a generous sized principal bedroom suite with ensuite shower room, attractive wooden floorboards and plenty of eaves storage.

Outside

The front of the property is accessed directly from Lostwithiel Street.

To the rear of the house and accessed from the kitchen, there is a paved rear courtyard with space for a table and chairs and with lovely views over the town, towards Place House and to the harbour. A lovely area to enjoy breakfast or evening BBQ.

EPC Rating - E

Council Tax Band - Currently Business Rates

Viewing

Strictly by appointment with the Sole Agents: May Whetter & Grose, Estuary House, Fore Street, Fowey, Cornwall, PL23 1AH. Tel: 01726 832299 Email: info@maywhetter.co.uk

Services

None of the services, systems or appliances at the property have been tested by the Agents.

Local Authority

Cornwall Council, 39 Penwinnick Road, St Austell, Cornwall, PL25 5DR