



PE PICKER
ELLIOTT
ESTATE AGENTS

Manor Park Road, Nuneaton CV11 5HR

£700,000

PE PICKER
ELLIOTT
ESTATE AGENTS

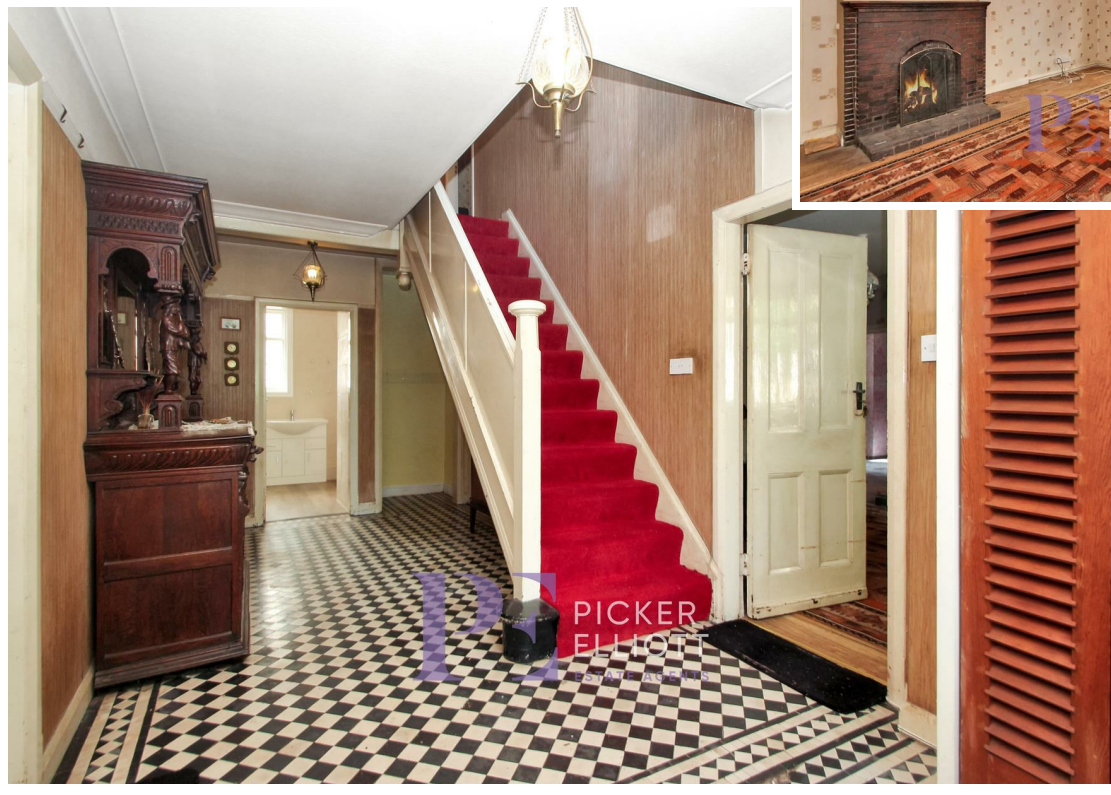
110 CASTLE STREET,
HINCKLEY, LE10 1DD
01455 612613

Welcome to Manor Park Road, Nuneaton - a prime location offering a unique character property with immense potential for development. This detached house boasts 4 reception rooms and 4 bedrooms, providing ample space for a growing family or those who love to entertain. Situated on a generous 0.35 acre plot, this property is a hidden gem waiting to be polished. While it may require some refurbishment, the charm and character of this house are undeniable. The potential for development is vast (STPP), allowing you to tailor the space to your exact needs and desires.

Imagine the possibilities - from creating a stunning garden to extending the property to make it truly your own. The location is unbeatable, offering convenience and a sense of community that is hard to come by. Don't miss out on this opportunity to transform this diamond in the rough into your dream home.

Council tax band F. EPC rating E.



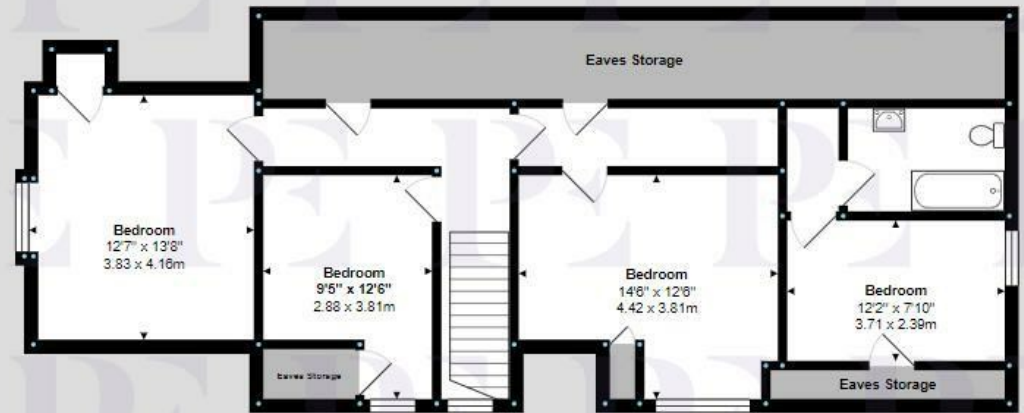




P
E
PICKER
ELLIOTT
ESTATE AGENTS



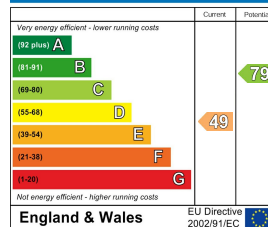
Ground Floor
Area: 1924 ft² ... 178.7 m²



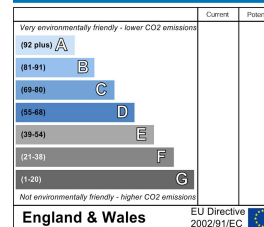
First Floor
Area: 774 ft² ... 71.9 m²

Total Area: 2698 ft² ... 250.6 m² (excluding eaves storage)
All measurements are approximate and for display purposes only.

Energy Efficiency Rating



Environmental Impact (CO₂) Rating



Registered company name: **Picker Elliott LTD**
Company registration number: **09153786**
VAT Number: **199 0836 58**

