

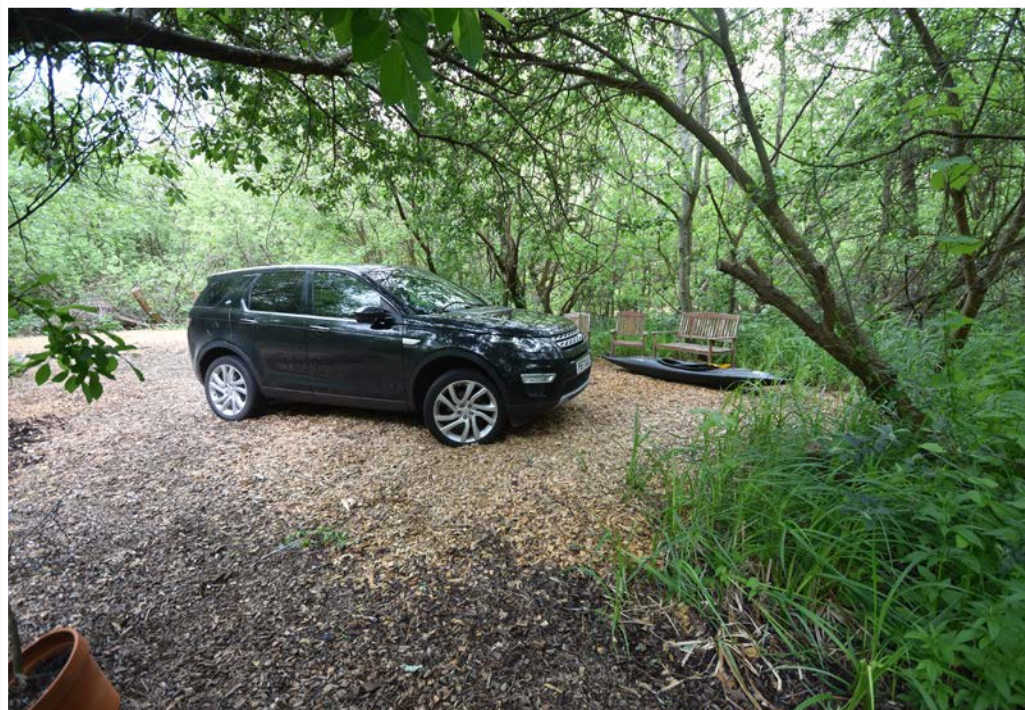


MOORING PLOT, CRABBETTS MARSH, HORNING
£140,000 FREEHOLD

WATERSIDE
ESTATE AGENTS







MOORING PLOT, CRABBETTS MARSH, HORNING, NORFOLK NR12 8JP

- Substantial mooring plot with generous mooring dock 44'6" x 17'6"
- Additional quay heading extending to 24 ft
- Wooded marshland - a haven for bird and wildlife
- Private parking area
- Electricity and water supplied

Picturesque, private and peaceful - an idyllic corner of the Norfolk Broads.

A substantial mooring plot set along a quiet dyke just off the River Bure.

In total the plot measures approximately 195 ft x 68 ft with a generous mooring dock measuring 44'6" x 17'6" with access from the side and the stern.

There is also an additional section of quay heading extending to approximately 24 ft suitable for a dayboat.

Much of the plot remains densely wooded marshland - a haven for an incredible variety of bird and wildlife.

A private wood chipped parking area with a shared pathway down to the mooring itself.

Electricity and water are supplied.

ADDITIONAL INFORMATION

Tenure: Freehold

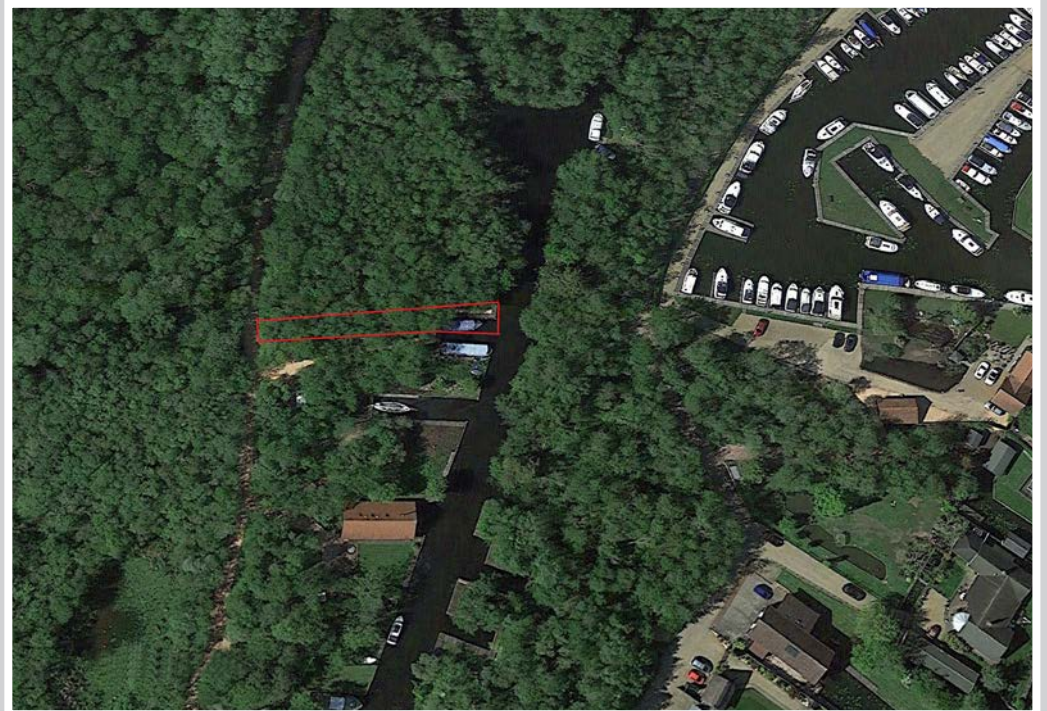
Access: Via a private owned woodchipped roadway. Annual maintenance charge approximately £900

Services: Mains water and electricity

Whilst it is our intention that these sales particulars offer a fair and accurate account, they are provided for guidance purposes only and do not constitute part of any offer or contract.

All measurements are approximate and we have not tested any equipment or services, and no warranty is given or implied that these are in working order.

Prospective purchasers are advised to satisfy themselves by inspection or by further investigation via their solicitor or surveyor.







WATERSIDE ESTATE AGENTS
Broads Haven, Potter Heigham, Norfolk NR29 5JD

Tel: 01692 670400
Email: sales@watersideestateagents.com
www.watersideestateagents.com