







**£299,995**

Located in Far Bletchley is a two double bedroom semi detached chalet style bungalow. The property is need of modernisation and comprises a lounge, kitchen, family bathroom and a dining room with access to the first floor bedroom. Further benefits include garage and driveway, private rear garden and being sold with no upper chain.

# Property Description

## **ENTRANCE PORCH**

Obscure glazed UPVC front door and windows to front and side aspects, door to:

## **ENTRANCE HALL**

Doors to lounge, bedroom, kitchen and dining room, radiator, loft access, airing cupboard housing hot water tank and linen shelving.

## **LOUNGE**

Double glazed window to front aspect. Radiator, feature electric fireplace, wall-mounted light.

## **DINING ROOM**

UPVC double glazed French doors to rear garden. Radiator, stairs rising to Bedroom Two.

## **KITCHEN**

Double glazed window to rear aspect, obscure double glazed door to side. Fitted with a range of wall-mounted and floor standing units with work surface over, space for washing machine, space for electric cooker, sink and drainer unit with mixer tap, space for under counter fridge, complementary tiling.

## **BEDROOM ONE**

Double glazed window to front aspect. Radiator, wall-mounted light.

## **BEDROOM TWO**

Two double glazed Velux windows, double glazed window to rear aspect. Eaves storage.

## **BATHROOM**

Obscure double glazed window to rear aspect. Panelled bath, pedestal wash hand basin, low level WC, radiator, complementary tiling.

## **OUTSIDE**

### **GARAGE/OUTBUILDING**

Garage with barn-style doors, window to side aspect, power and lighting. Outbuilding with space for fridge freezer, power and lighting.

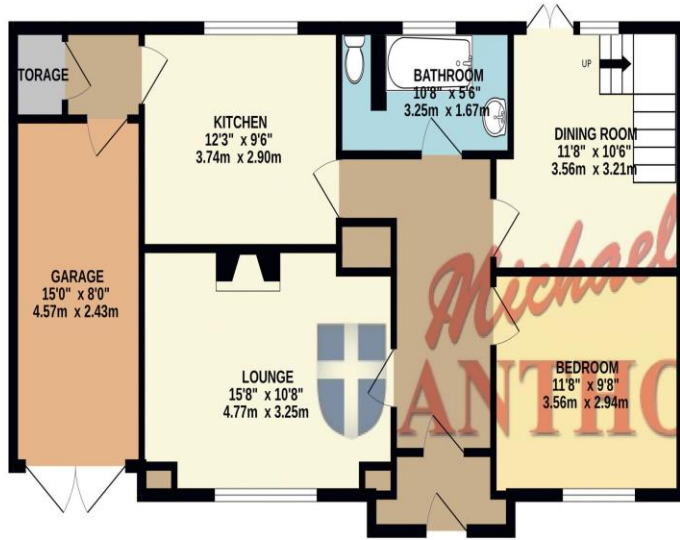
### **FRONT GARDEN**

Low level brick wall border, lawn area, flower and shrub beds, path to front door, driveway.

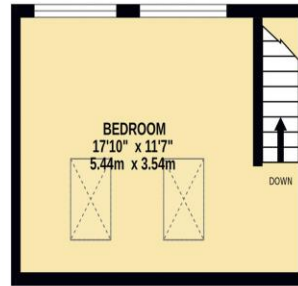
### **REAR GARDEN**

Fully enclosed by timber fencing and brick wall, lawn area, flower and shrub beds, shed to remain, patio area, gravel area, side gated access.

GROUND FLOOR  
831 sq.ft. (77.2 sq.m.) approx.

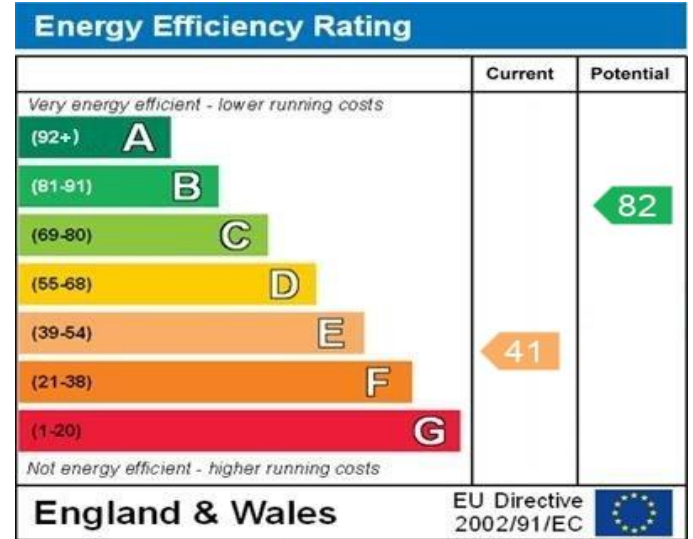


1ST FLOOR  
204 sq.ft. (18.9 sq.m.) approx.



TOTAL FLOOR AREA: 1034 sq.ft. (96.1 sq.m.) approx.

Whilst every attempt has been made to ensure the accuracy of the floorplan contained here, measurements of doors, windows, rooms and any other items are approximate and no responsibility is taken for any error, omission or mis-statement. This plan is for illustrative purposes only and should be used as such by any prospective purchaser. The services, systems and appliances shown have not been tested and no guarantee as to their operability or efficiency can be given.  
Made with Metropix ©2024



WWW.EPC4U.COM

MONEY LAUNDERING REGULATIONS 2017 intending purchasers will be asked to produce identification and proof of financial status when an offer is received. We would ask for your co-operation in order that there will be no delay in agreeing the sale.

THE CONSUMER PROTECTION REGULATIONS 2008 The Agent has not tested any apparatus, equipment, fixtures and fittings or services and so cannot verify that they are in working order or fit for the purpose. A Buyer is advised to obtain verification from their Solicitor or Surveyor. References to the Tenure of a Property are based on information supplied by the Seller. The Agent has not had sight of the title documents. A Buyer is advised to obtain verification from their Solicitor. You are advised to check the availability of this property before travelling any distance to view. We have taken every precaution to ensure that these details are accurate and not misleading. If there is any point which is of particular importance to you, please contact us and we will provide any information you require. This is advisable, particularly if you intend to travel some distance to view the property. The mention of any appliances and services within these details does not imply that they are in full and efficient working order. These particulars are in draft form awaiting Vendors confirmation of their accuracy. These details must therefore be taken as a guide only and approved details should be requested from the agents

190 Queensway Bletchley Milton Keynes MK2 2ST  
01908 648 666 | bletchley@maea.co.uk