







**£450,000**

This two bedroom detached bungalow is situated in a cul-de-sac on one of Bletchley's most popular locations on Craigmore Avenue. The property boasts, a wrap around rear garden, kitchen, lounge/diner, conservatory, utility room, garage and ample off road parking. the bungalow is being sold with NO UPPER CHAIN.

# Property Description

## ENTRANCE

Frosted double glazed door to entrance porch.

## ENTRANCE PORCH

Tiled floor, frosted double glazed doors to utility room and entrance hall.

## ENTRANCE HALL

Two storage cupboards, two radiators, doors to kitchen, lounge/diner, conservatory, bedrooms and bathroom.

## LOUNGE/DINER

Double glazed sliding doors to side, double glazed window to front aspect. Two radiators, gas fireplace with brick surround.

## CONSERVATORY

Double glazed sliding doors to garden, double glazed windows to sides.

## KITCHEN

Double glazed window to side aspect. Wall mounted boiler. Range of wall mounted and floor standing units with roll edge work surface, integrated electric hob and oven, extractor hood, one and a half stainless steel sink with mixer tap, tiled walls, integrated fridge.

## UTILITY ROOM

Frosted double glazed door to garage, frosted double glazed door to rear. Wall and base units, space for washing machine, tumble dryer and freezer, tiled floor.

## BEDROOM ONE

Double glazed window to rear aspect. Radiator, built in wardrobe.

## BEDROOM TWO

Double glazed window to rear aspect. Radiator, built in wardrobe.

## BATHROOM

Frosted double glazed window to side aspect. Panelled bath with shower attachment mixer tap, tiled floor, vanity wash hand basin with mixer tap, low level w.c., heated towel radiator, fully tiled walls.

## OUTSIDE

### GARAGE

Up and over door, power and light.

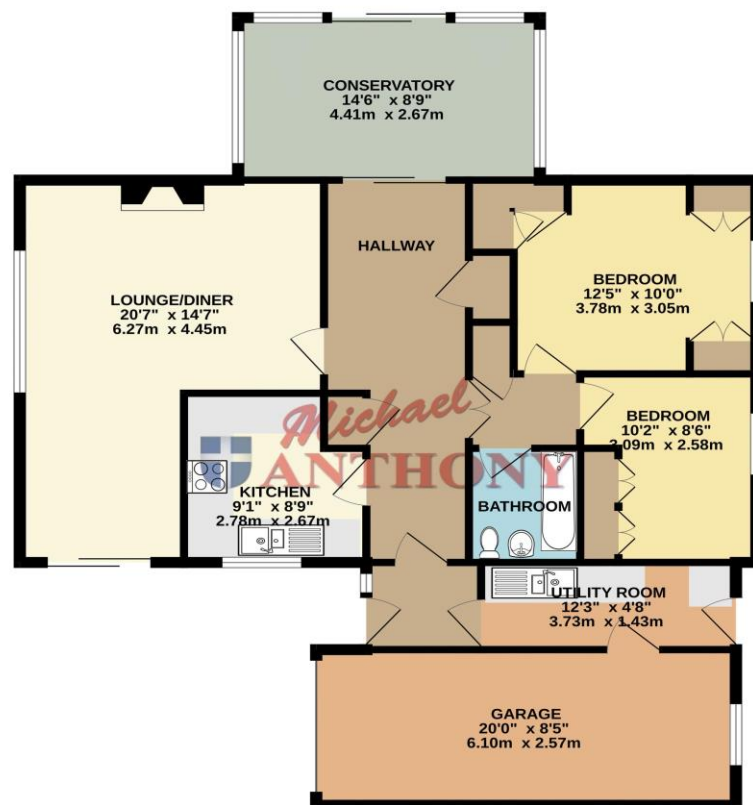
### FRONT GARDEN

Block paved driveway, stone border, outside tap, enclosed by brick wall, flower and shrub border.

### REAR GARDEN

Laid to lawn with patio area, shed, stone area, mature trees, flower and shrub border, enclosed by timber fencing panels, side gated access.

GROUND FLOOR  
1101 sq.ft. (102.3 sq.m.) approx.



TOTAL FLOOR AREA : 1101 sq.ft. (102.3 sq.m.) approx.

Whilst every attempt has been made to ensure the accuracy of the floorplan contained here, measurements of doors, windows, rooms and any other items are approximate and no responsibility is taken for any error, omission or mis-statement. This plan is for illustrative purposes only and should be used as such by any prospective purchaser. The services, systems and appliances shown have not been tested and no guarantee as to their operability or efficiency can be given.  
Made with Metropix 62025

MONEY LAUNDERING REGULATIONS 2017 intending purchasers will be asked to produce identification and proof of financial status when an offer is received. We would ask for your co-operation in order that there will be no delay in agreeing the sale.

THE CONSUMER PROTECTION REGULATIONS 2008 The Agent has not tested any apparatus, equipment, fixtures and fittings or services and so cannot verify that they are in working order or fit for the purpose. A Buyer is advised to obtain verification from their Solicitor or Surveyor. References to the Tenure of a Property are based on information supplied by the Seller. The Agent has not had sight of the title documents. A Buyer is advised to obtain verification from their Solicitor. You are advised to check the availability of this property before travelling any distance to view. We have taken every precaution to ensure that these details are accurate and not misleading. If there is any point which is of particular importance to you, please contact us and we will provide any information you require. This is advisable, particularly if you intend to travel some distance to view the property. The mention of any appliances and services within these details does not imply that they are in full and efficient working order. These particulars are in draft form awaiting Vendors confirmation of their accuracy. These details must therefore be taken as a guide only and approved details should be requested from the agents

190 Queensway Bletchley Milton Keynes MK2 2ST  
01908 648 666 | [bletchley@maea.co.uk](mailto:bletchley@maea.co.uk)