



View of block



£200,000

Located in Fenny Stratford is this two bedroom third floor apartment. The property comprises an open plan living area consisting of a kitchen/lounge/diner, en-suite to main bedroom and a further family bathroom. Further benefits include gated allocated parking and lift access.

Property Description

ENTRANCE

Security door entry, stairs and lift to third floor. Door to:

ENTRANCE HALL

Storage cupboard, radiator, doors to lounge/kitchen/diner, both bedrooms and family bathroom.

LOUNGE/DINER

Double glazed window to rear aspect. Two radiators, open to kitchen.

KITCHEN AREA

Wall mounted and floor standing units with roll top work surface over, integrated oven and gas hob with extractor fan over, one and a half stainless steel sink with mixer tap, space for fridge/freezer and washing machine, wall mounted boiler.

BEDROOM ONE

Double glazed window to rear aspect. Radiator, door to en-suite.

EN-SUITE

Low level w.c., pedestal wash hand basin, shower cubicle, radiator, part tiled walls, tiled floor.

BEDROOM TWO

Double glazed window to rear aspect. Radiator.

BATHROOM

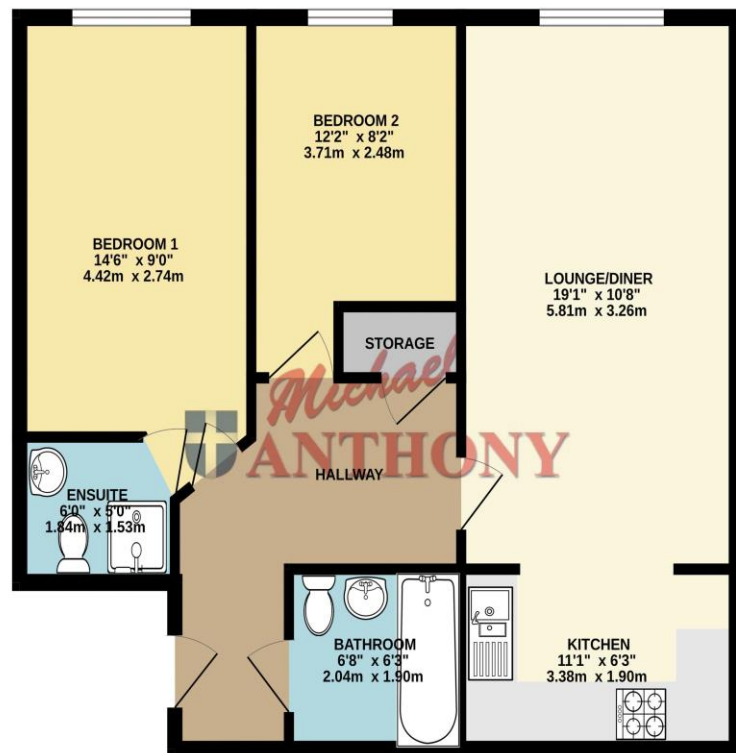
Low level w.c., pedestal wash hand basin, bath with shower attachment, part tiled walls, radiator.

OUTSIDE

PARKING

Allocated parking for two cars.

THIRD FLOOR
669 sq.ft. (62.2 sq.m.) approx.



TOTAL FLOOR AREA - 669 sq.ft. (62.2 sq.m.) approx.
Whilst every attempt has been made to ensure the accuracy of the floorplan contained here, measurements of doors, windows, rooms and any other items are approximate and no responsibility is taken for any error, omission or mis-statement. This plan is for illustrative purposes only and should be used as such by any prospective purchaser. The services, systems and appliances shown have not been tested and no guarantee as to their operability or efficiency can be given.
Made with Metropix 6/20/25

MONEY LAUNDERING REGULATIONS 2017 intending purchasers will be asked to produce identification and proof of financial status when an offer is received. We would ask for your co-operation in order that there will be no delay in agreeing the sale.

THE CONSUMER PROTECTION REGULATIONS 2008 The Agent has not tested any apparatus, equipment, fixtures and fittings or services and so cannot verify that they are in working order or fit for the purpose. A Buyer is advised to obtain verification from their Solicitor or Surveyor. References to the Tenure of a Property are based on information supplied by the Seller. The Agent has not had sight of the title documents. A Buyer is advised to obtain verification from their Solicitor. You are advised to check the availability of this property before travelling any distance to view. We have taken every precaution to ensure that these details are accurate and not misleading. If there is any point which is of particular importance to you, please contact us and we will provide any information you require. This is advisable, particularly if you intend to travel some distance to view the property. The mention of any appliances and services within these details does not imply that they are in full and efficient working order. These particulars are in draft form awaiting Vendors confirmation of their accuracy. These details must therefore be taken as a guide only and approved details should be requested from the agents

190 Queensway Bletchley Milton Keynes MK2 2ST
01908 648 666 | bletchley@maea.co.uk