





£395,000

Situated in the sought-after village of Newton Longville is this three-bedroom semi-detached family home offered to the market with no chain. The property comprises an entrance hall, lounge, dining room, kitchen and family bathroom. Externally the property benefits from front and rear gardens with further benefits including a garage and off-road parking.

Property Description

ENTRANCE

UPVC door to:

ENTRANCE HALL

Stairs rising to first floor, radiator, doors to lounge/dining room.

LOUNGE

Double glazed window to front aspect. Radiator, feature brick fireplace.

DINING ROOM

Double glazed window to rear aspect. Radiator, door to kitchen, storage cupboard housing washing machine and dryer.

KITCHEN

Double glazed window to rear aspect, double glazed door to garden. Fitted with a range of wall-mounted and base units with rolled edge work surface over, stainless steel sink with mixer tap, space for fridge freezer, space for dishwasher.

LANDING

Double glazed window to side aspect. Doors to bedrooms and bathroom.

BEDROOM ONE

Double glazed window to front. Radiator, fitted wardrobe.

BEDROOM TWO

Double glazed window to rear aspect. Radiator.

BEDROOM THREE

Double glazed window to front aspect. Radiator, storage cupboard.

BATHROOM

Double glazed frosted window to rear aspect. Low level WC, heated towel rail, part tiled walls, pedestal wash hand basin, bath with shower attachment.

OUTSIDE

GARAGE

Garage with up and over door, power and lights.

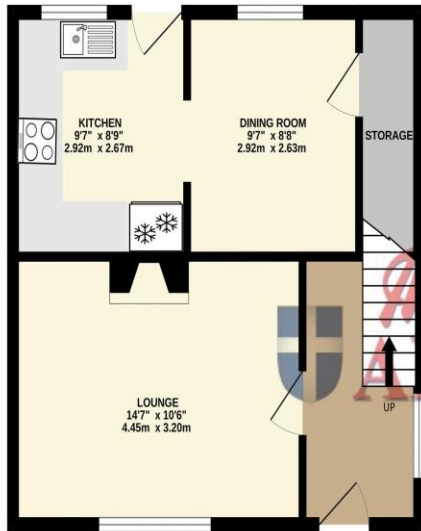
FRONT GARDEN

Mainly laid to lawn, off-road parking for two cars.

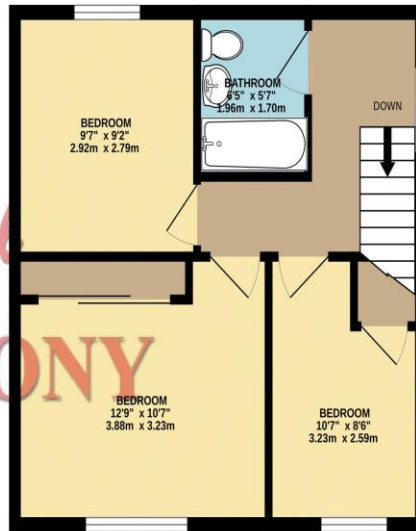
REAR GARDEN

Mainly laid to lawn with patio area, courtesy door to garage, enclosed by wooden fence panelling.

GROUND FLOOR
403 sq.ft. (37.4 sq.m.) approx.

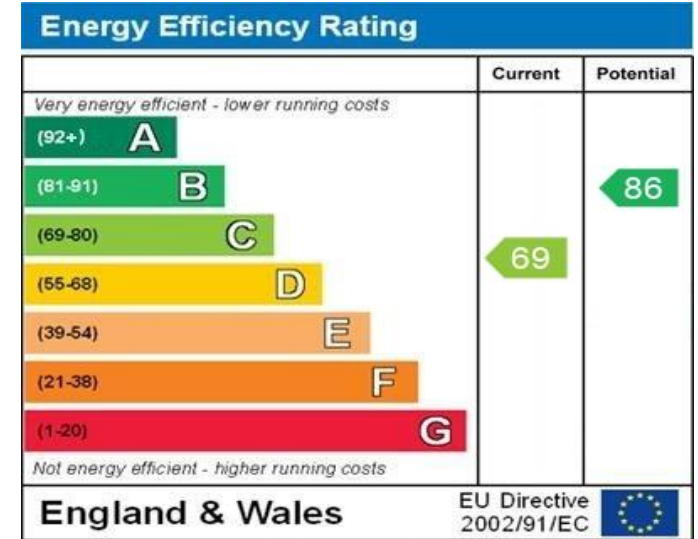


1ST FLOOR
409 sq.ft. (38.0 sq.m.) approx.



TOTAL FLOOR AREA : 812 sq.ft. (75.4 sq.m.) approx.

Whilst every attempt has been made to ensure the accuracy of the floorplan contained here, measurements of doors, windows, rooms and any other items are approximate and no responsibility is taken for any error, omission or mis-statement. This plan is for illustrative purposes only and should be used as such by any prospective purchaser. The services, systems and appliances shown have not been tested and no guarantee as to their operability or efficiency can be given.
Made with Metropix ©2025



WWW.EPC4U.COM

MONEY LAUNDERING REGULATIONS 2017 intending purchasers will be asked to produce identification and proof of financial status when an offer is received. We would ask for your co-operation in order that there will be no delay in agreeing the sale.

THE CONSUMER PROTECTION REGULATIONS 2008 The Agent has not tested any apparatus, equipment, fixtures and fittings or services and so cannot verify that they are in working order or fit for the purpose. A Buyer is advised to obtain verification from their Solicitor or Surveyor. References to the Tenure of a Property are based on information supplied by the Seller. The Agent has not had sight of the title documents. A Buyer is advised to obtain verification from their Solicitor. You are advised to check the availability of this property before travelling any distance to view. We have taken every precaution to ensure that these details are accurate and not misleading. If there is any point which is of particular importance to you, please contact us and we will provide any information you require. This is advisable, particularly if you intend to travel some distance to view the property. The mention of any appliances and services within these details does not imply that they are in full and efficient working order. These particulars are in draft form awaiting Vendors confirmation of their accuracy. These details must therefore be taken as a guide only and approved details should be requested from the agents

190 Queensway Bletchley Milton Keynes MK2 2ST
01908 648 666 | bletchley@maea.co.uk