





£360,000

Located in the popular Village location of Bow Brickhill is this three-bedroom terrace family home. The property boasts extensive front and rear gardens, a front to back lounge/diner and a conservatory. Further benefits include being sold with no upper chain.

Property Description

ENTRANCE

Aluminium double glazed door to entrance porch.

ENTRANCE PORCH

Double glazed windows to front and side aspects, circular window to side. Tiled floor, electric heater, door to entrance hall.

ENTRANCE HALL

Double glazed window to front aspect. Stairs to first floor, understairs storage cupboard, radiator, doors to lounge and kitchen.

LOUNGE

Double glazed windows to front and rear aspects. Feature fireplace.

KITCHEN

Double glazed window to rear aspect. Range of wall mounted and floor standing units with roll edge work surface, one and a half stainless steel sink with mixer tap, integrated oven and hob with extractor fan over, space for fridge and washing machine, part tiled walls, 'Glowworm' floor boiler, door to conservatory.

CONSERVATORY

Double glazed sliding patio door to garden, double glazed windows to side and rear aspects. Tiled floor.

LANDING

Double glazed window to front aspect. Access to loft space, doors to bedrooms and family bathroom.

BEDROOM ONE

Double glazed window to rear aspect. Radiator.

BEDROOM TWO

Double glazed window to rear aspect. Cupboard housing water tank.

BEDROOM THREE

Double glazed windows to front and rear aspects.

BATHROOM

Double glazed window to front aspect. Low level w.c., pedestal wash hand basin, heated towel rail, bath with power shower over, tiled walls.

OUTSIDE

FRONT GARDEN

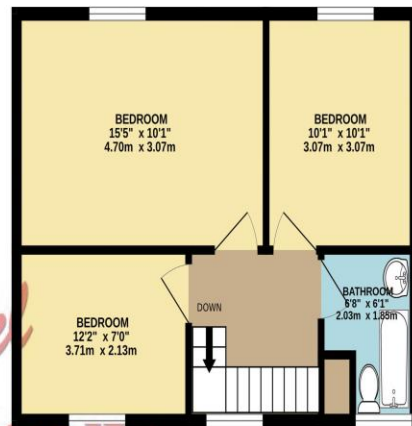
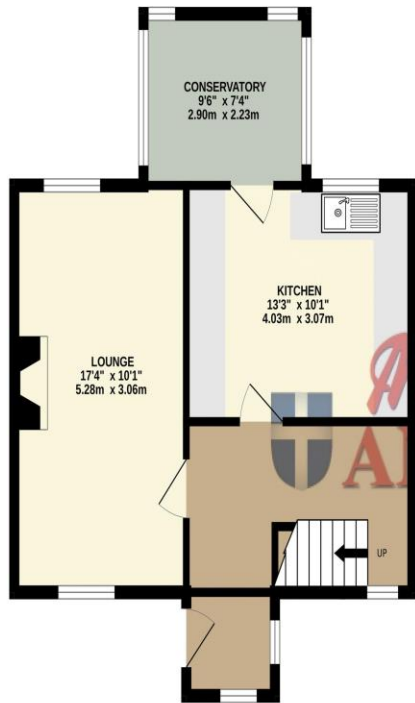
Mainly laid to lawn with mature fruit trees, enclosed by brick wall.

REAR GARDEN

Mainly laid to lawn with patio area, enclosed by wooden fencing panels, outbuildings.

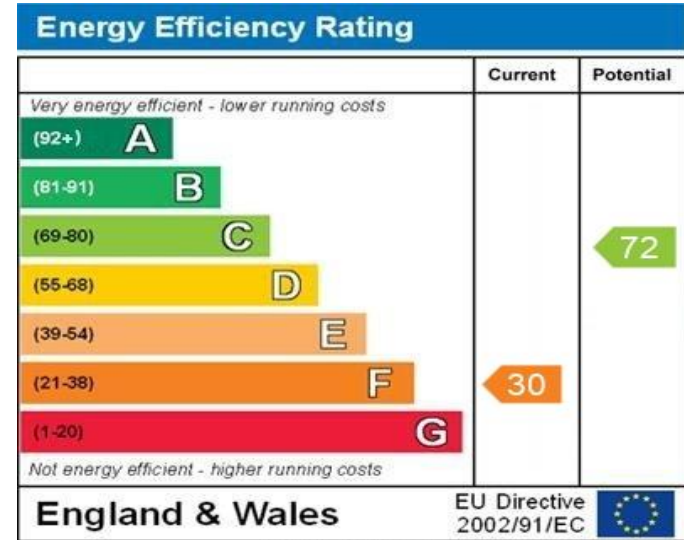
GROUND FLOOR
489 sq.ft. (45.4 sq.m.) approx.

1ST FLOOR
403 sq.ft. (37.4 sq.m.) approx.



TOTAL FLOOR AREA : 892 sq.ft. (82.9 sq.m.) approx.

Whilst every attempt has been made to ensure the accuracy of the floorplan contained here, measurements of doors, windows, rooms and any other items are approximate and no responsibility is taken for any error, omission or mis-statement. This plan is for illustrative purposes only and should be used as such by any prospective purchaser. The services, systems and appliances shown have not been tested and no guarantee as to their operability or efficiency can be given.
Made with Metropix ©2024



WWW.EPC4U.COM

MONEY LAUNDERING REGULATIONS 2017 intending purchasers will be asked to produce identification and proof of financial status when an offer is received. We would ask for your co-operation in order that there will be no delay in agreeing the sale.

THE CONSUMER PROTECTION REGULATIONS 2008 The Agent has not tested any apparatus, equipment, fixtures and fittings or services and so cannot verify that they are in working order or fit for the purpose. A Buyer is advised to obtain verification from their Solicitor or Surveyor. References to the Tenure of a Property are based on information supplied by the Seller. The Agent has not had sight of the title documents. A Buyer is advised to obtain verification from their Solicitor. You are advised to check the availability of this property before travelling any distance to view. We have taken every precaution to ensure that these details are accurate and not misleading. If there is any point which is of particular importance to you, please contact us and we will provide any information you require. This is advisable, particularly if you intend to travel some distance to view the property. The mention of any appliances and services within these details does not imply that they are in full and efficient working order. These particulars are in draft form awaiting Vendors confirmation of their accuracy. These details must therefore be taken as a guide only and approved details should be requested from the agents

190 Queensway Bletchley Milton Keynes MK2 2ST
01908 648 666 | bletchley@maea.co.uk