





£259,500

Situated on the Racecourses development is this two-bedroom terraced house, being sold with no upper chain. The accommodation comprises lounge, kitchen/diner, two bedrooms, bathroom, car port and rear garden. Ideal first time buy.

Property Description

ENTRANCE

Door to:

ENTRANCE HALL

Stairs rising to first floor, wood effect flooring.

LOUNGE

Double glazed box bay window to front aspect. Television point, telephone point, wood effect flooring, electric panel heater.

KITCHEN

Double glazed window and door to rear. Fitted with a range of base and eye level units with rolled edge work surface over, cooker, washing machine, and fridge freezer to remain, complementary tiling, stainless steel sink with mixer tap, electric panel heater, under stairs storage cupboard.

LANDING

Access to loft void, doors to bedrooms and bathroom, electric panel heater.

BEDROOM ONE

Double glazed window to front aspect. Built-in wardrobe, electric panel heater.

BEDROOM TWO

Double glazed window to rear aspect. Storage cupboard, electric panel heater.

BATHROOM

Three-piece suite comprising panelled bath with mixer tap and electric shower attachment over, low level WC, wash hand basin set in vanity unit with mixer tap over, complementary tiling, tiled floor, storage cupboard.

OUTSIDE

CAR PORT

Allocated parking.

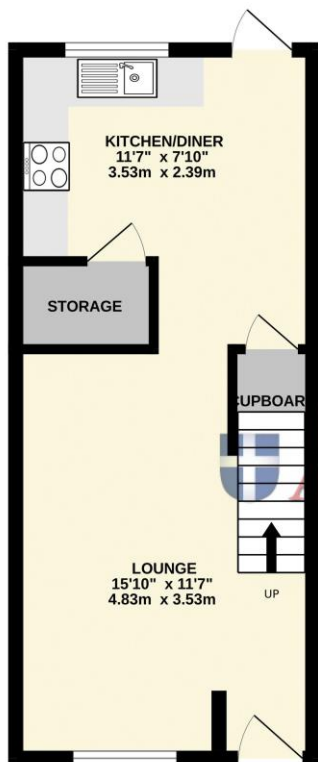
FRONT GARDEN

Path to front door, gravel border.

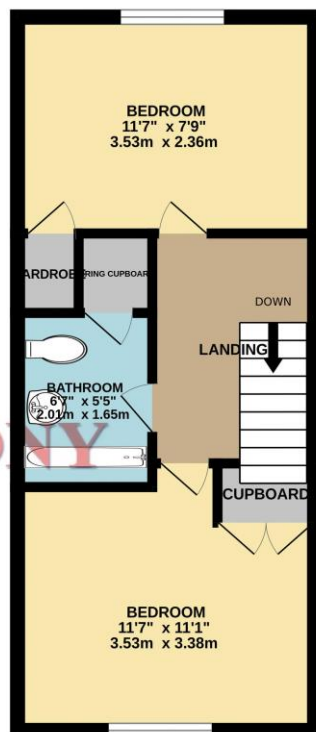
REAR GARDEN

Laid to lawn with patio area, rear access, shed to remain, outside tap.

GROUND FLOOR
319 sq.ft. (29.6 sq.m.) approx.



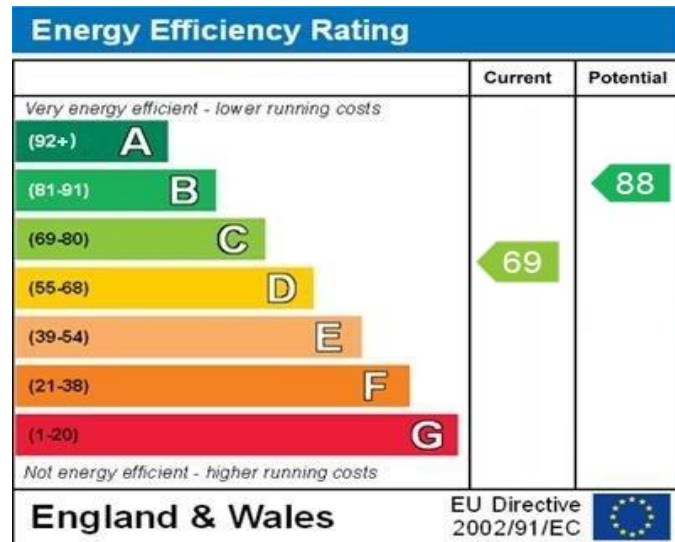
1ST FLOOR
323 sq.ft. (30.0 sq.m.) approx.



Michael
ANTHONY

TOTAL FLOOR AREA: 641 sq.ft. (59.6 sq.m.) approx.

Whilst every attempt has been made to ensure the accuracy of the floorplan contained here, measurements of doors, windows, rooms and any other items are approximate and no responsibility is taken for any error, omission or mis-statement. This plan is for illustrative purposes only and should be used as such by any prospective purchaser. The services, systems and appliances shown have not been tested and no guarantee as to their operability or efficiency can be given.
Made with Metropix ©2024



WWW.EPC4U.COM

MONEY LAUNDERING REGULATIONS 2017 intending purchasers will be asked to produce identification and proof of financial status when an offer is received. We would ask for your co-operation in order that there will be no delay in agreeing the sale.

THE CONSUMER PROTECTION REGULATIONS 2008 The Agent has not tested any apparatus, equipment, fixtures and fittings or services and so cannot verify that they are in working order or fit for the purpose. A Buyer is advised to obtain verification from their Solicitor or Surveyor. References to the Tenure of a Property are based on information supplied by the Seller. The Agent has not had sight of the title documents. A Buyer is advised to obtain verification from their Solicitor. You are advised to check the availability of this property before travelling any distance to view. We have taken every precaution to ensure that these details are accurate and not misleading. If there is any point which is of particular importance to you, please contact us and we will provide any information you require. This is advisable, particularly if you intend to travel some distance to view the property. The mention of any appliances and services within these details does not imply that they are in full and efficient working order. These particulars are in draft form awaiting Vendors confirmation of their accuracy. These details must therefore be taken as a guide only and approved details should be requested from the agents

190 Queensway Bletchley Milton Keynes MK2 2ST
01908 648 666 | bletchley@maea.co.uk