





£260,000

Located within the highly sought after location of Willen this over 65's two bedroom ground floor maisonette is offered to the market with many benefits including a lounge, kitchen, wet room, communal gardens and communal areas.

Property Description

ENTRANCE

Door to:

ENTRANCE HALL

Doors to all rooms, storage cupboard, radiator.

LOUNGE

Double glazed windows to side and rear aspects, double glazed double doors to rear.
Two radiators.

KITCHEN

Double glazed window to rear aspect. Fitted with a range of wall-mounted and floor standing units with rolled edge work surface over, built-in oven with hob and extractor fan over, wall-mounted gas combi boiler, sink unit with mixer tap and drainer, plumbing for washing machine, space for fridge freezer, radiator.

BEDROOM ONE

Double glazed window to side aspect. Radiator, built-in wardrobe.

BEDROOM TWO

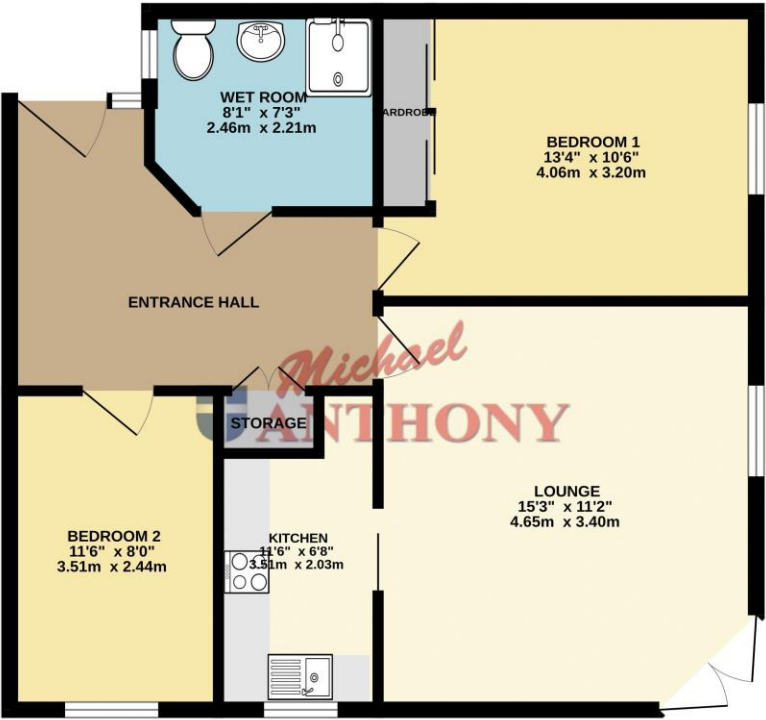
Double glazed window to rear aspect. Radiator.

WET ROOM

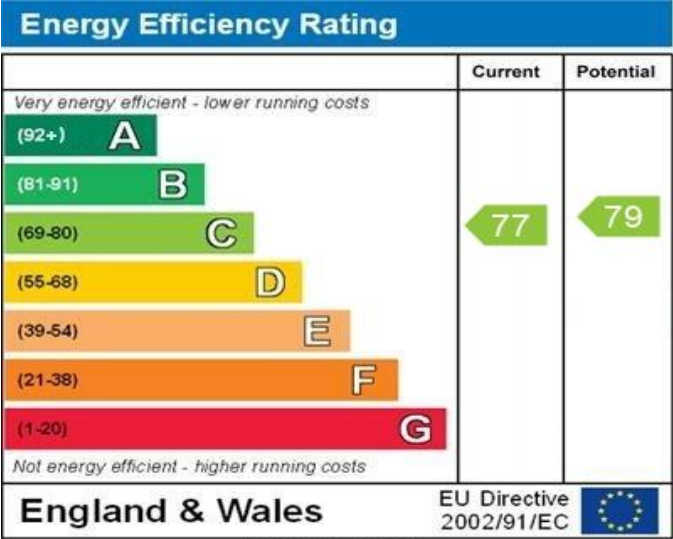
Double glazed frosted window to side aspect. Low level WC, wall-mounted wash hand basin, shower attachment, radiator.



GROUND FLOOR
643 sq.ft. (59.8 sq.m.) approx.



TOTAL FLOOR AREA: 643 sq.ft. (59.8 sq.m.) approx.
Whilst every attempt has been made to ensure the accuracy of the floorplan contained here, measurements of doors, windows, rooms and any other items are approximate and no responsibility is taken for any error, omission or mis-statement. This plan is for illustrative purposes only and should be used as such by any prospective purchaser. The services, systems and appliances shown have not been tested and no guarantee as to their operability or efficiency can be given.
Made with Metropia ©2025



WWW.EPC4U.COM

MONEY LAUNDERING REGULATIONS 2017 intending purchasers will be asked to produce identification and proof of financial status when an offer is received. We would ask for your co-operation in order that there will be no delay in agreeing the sale.

THE CONSUMER PROTECTION REGULATIONS 2008 The Agent has not tested any apparatus, equipment, fixtures and fittings or services and so cannot verify that they are in working order or fit for the purpose. A Buyer is advised to obtain verification from their Solicitor or Surveyor. References to the Tenure of a Property are based on information supplied by the Seller. The Agent has not had sight of the title documents. A Buyer is advised to obtain verification from their Solicitor. You are advised to check the availability of this property before travelling any distance to view. We have taken every precaution to ensure that these details are accurate and not misleading. If there is any point which is of particular importance to you, please contact us and we will provide any information you require. This is advisable, particularly if you intend to travel some distance to view the property. The mention of any appliances and services within these details does not imply that they are in full and efficient working order. These particulars are in draft form awaiting Vendors confirmation of their accuracy. These details must therefore be taken as a guide only and approved details should be requested from the agents

209A Witan Gate Sovereign Court Milton Keynes Buckinghamshire MK9 2HP
01908 393 553 | miltonkeynes@maea.co.uk