





£365,000

Tucked away within a quiet cul-de-sac location this three bedroom semi-detached family home is offered to the market with no upper chain with further benefits including a lounge/diner, kitchen, en-suite to main bedroom, family bathroom and additional downstairs cloakroom, gardens, garage and driveway parking.

Property Description

ENTRANCE

Door to:

ENTRANCE HALL

Stairs rising to first floor, radiator.

CLOAKROOM

Double glazed frosted window to front aspect. Radiator, low level WC, wall-mounted wash hand basin.

LOUNGE

Double glazed bay window to rear aspect, double glazed double door to rear. Radiator.

KITCHEN

Double glazed window to front aspect. Fitted with a range of wall-moutuned and floor standing units with rolled edge work surface over, one and a half bowl stainless steel sink unit with mixer tap and drainer, storage cupboard housing wall-mounted gas fired boiler, plumbing for washing machine, space for fridge freezer, built-in oven with gas hob and extractor fan over.

LANDING

Stairs rising to second floor, airing cupboard housing water cylinder.

BEDROOM TWO

Double glazed window to front aspect. Radiator, built-in wardrobe.

BEDROOM THREE

Double glazed window to rear aspect. Radiator.

BATHROOM

Double glazed frosted window to side aspect. Heated towel rail, extractor fan, pedestal wash hand basin, low level WC, panelled bath with shower attachment over.

LANDING (Second Floor)

Skylight. Door to bedroom one.

BEDROOM ONE

Double glazed window to front aspect. radiator, two built-in wardrobes, access to loft space.

EN-SUITE

Skylight. Shower unit, extractor fan, pedestal wash hand basin, low level WC, heated towel rail.

OUTSIDE

GARAGE/PARKING

Garage with metal up and over door, power and lighting. Driveway parking for two cars.

FRONT GARDEN

Hardstanding pathway leading to front door, shingled area, cold water tap, outside light, artificial grass.

REAR GARDEN

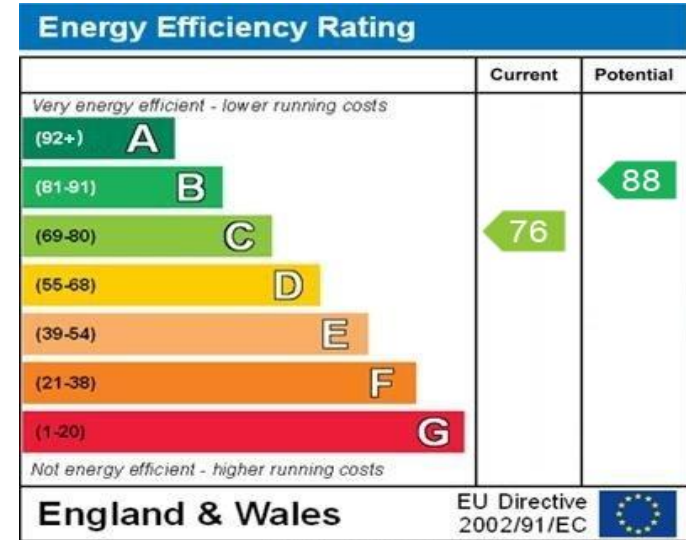
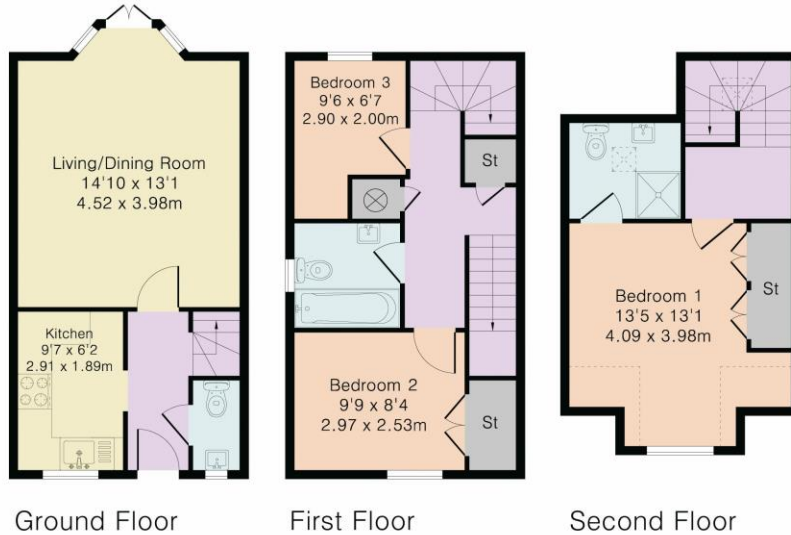
Mainly laid to lawn surrounded by panel fencing, hardstanding area, flower and shrub beds, timber storage shed, gated side access, door to garage.

Approximate Gross Internal Area 915 sq ft - 85 sq m

Ground Floor Area 331 sq ft – 31 sq m

First Floor Area 322 sq ft – 30 sq m

Second Floor Area 262 sq ft – 24 sq m



WWW.EPC4U.COM



Although Pink Plan Ltd ensures the highest level of accuracy, measurements of doors, windows and rooms are approximate and no responsibility is taken for error, omission or misstatement. These plans are for representation purposes only as defined by RICS code of measuring practice. No guarantee is given on total square footage of the property within this plan. The figure icon is for initial guidance only and should not be relied on as a basis of valuation.



MONEY LAUNDERING REGULATIONS 2017 intending purchasers will be asked to produce identification and proof of financial status when an offer is received. We would ask for your co-operation in order that there will be no delay in agreeing the sale.

THE CONSUMER PROTECTION REGULATIONS 2008 The Agent has not tested any apparatus, equipment, fixtures and fittings or services and so cannot verify that they are in working order or fit for the purpose. A Buyer is advised to obtain verification from their Solicitor or Surveyor. References to the Tenure of a Property are based on information supplied by the Seller. The Agent has not had sight of the title documents. A Buyer is advised to obtain verification from their Solicitor. You are advised to check the availability of this property before travelling any distance to view. We have taken every precaution to ensure that these details are accurate and not misleading. If there is any point which is of particular importance to you, please contact us and we will provide any information you require. This is advisable, particularly if you intend to travel some distance to view the property. The mention of any appliances and services within these details does not imply that they are in full and efficient working order. These particulars are in draft form awaiting Vendors confirmation of their accuracy. These details must therefore be taken as a guide only and approved details should be requested from the agents

209A Witan Gate Sovereign Court Milton Keynes Buckinghamshire MK9 2HP
01908 393 553 | miltonkeynes@maea.co.uk