

RIVERHOMES

**Palace Wharf
Hammersmith W6**

**£5,633 per month
Flexible furnishings**



Palace Wharf Hammersmith W6

This spectacular, light and airy, interior designed two bedroom, two bathroom apartment with an exclusive garden and river views is available on the ground floor of this newly converted, warehouse style, gated development on the River Thames. On offer is over 900 sq. ft. of luxury living including two bedrooms with en suite bathrooms, a large open plan kitchen / reception opening onto a small private garden, perfect for entertaining, and a separate toilet. The fully fitted Metris Kitchen is complete with Miele appliances including an integrated dishwasher, washer /

dryer, full height fridge-freezer, oven, hob and integrated extractor fan as well as a Caple wine cooler. The bathrooms comprise of full bathroom suites with underfloor heating whilst the bedrooms boast bespoke mirrored wardrobes and automatic lights which are sure to impress. Further benefits of the apartment include a Crestron audio-visual system, a digital entry system and pre-wiring for Sky + TV.

KEY FEATURES

2 bedrooms

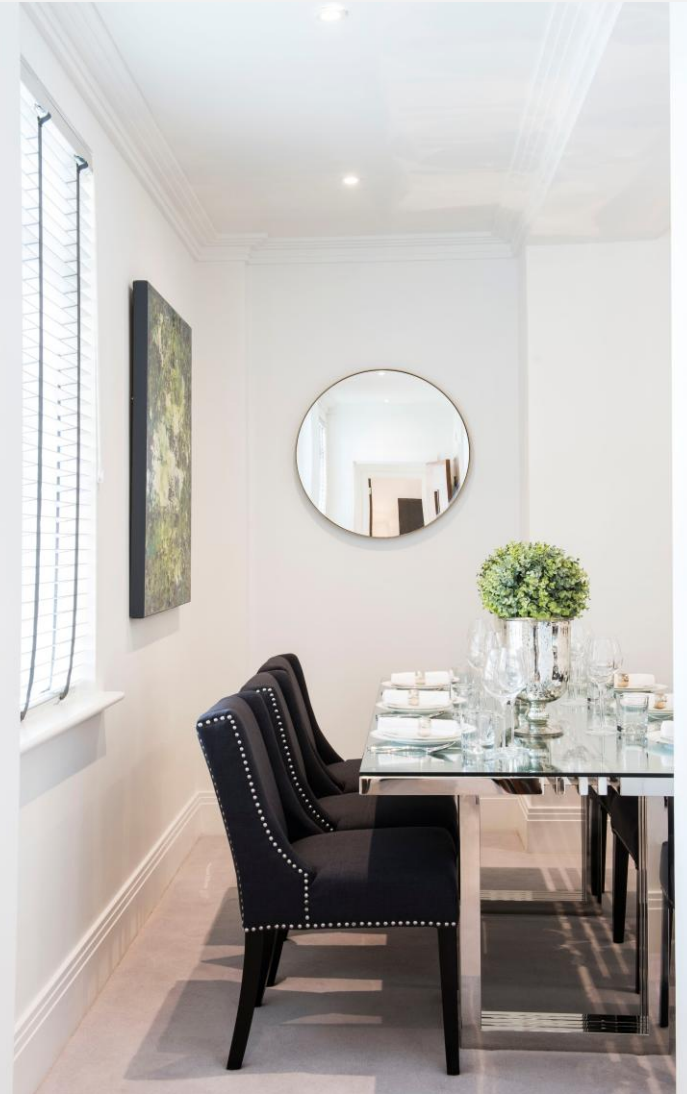
2 bathrooms

New build gated development

River views

CCTV and key phone entry system

Available 23rd of December





ENERGY PERFORMANCE CERTIFICATE

Score	Energy rating	Current	Potential
92+	A		
81-91	B		
69-80	C		
55-68	D		
39-54	E	43 E	43 E
21-38	F		
1-20	G		

KEY INFORMATION

Local authority:	London Borough of Hammersmith & Fulham
Internal area:	669 sq. ft. / 62.15 sq. m.
Council tax band:	F
Available from:	23 rd of December

