

# RIVERHOMES

Orpheus, The Ham Ham Wharf  
Brentford

£2,500 Per Month



# Orpheus, The Ham Ham Wharf Brentford

## KEY FEATURES

- 3 bedrooms
- 2 bathrooms
- Open-plan living/kitchen/dining area with impressive skylight
- 30 ft. sun deck spanning 2 levels and includes gas BBQ and sink
- Eco-friendly pellet boiler and underfloor heating
- Parking on application with the Council
- Available Immediately







# Orpheus, The Ham Ham Wharf Brentford

West London Branch  
28 Thames Road  
London  
W4 3RJ

020 8996 0600  
www.riverhomes.co.uk

## ENERGY PERFORMANCE CERTIFICATE

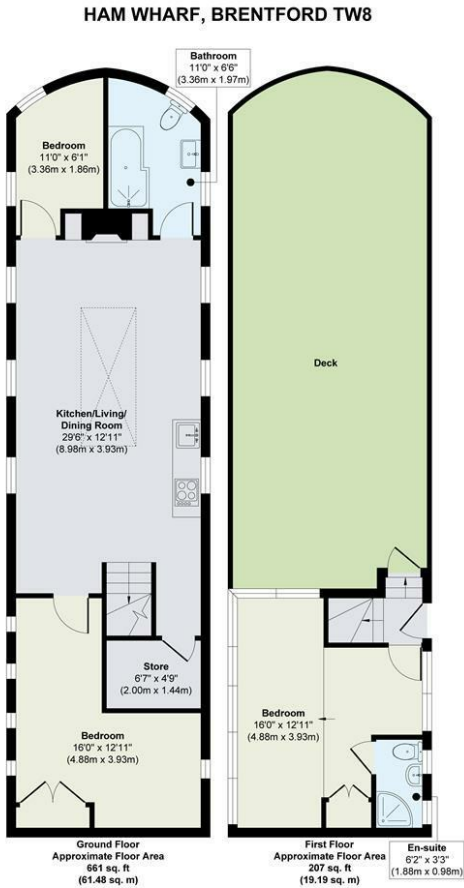
## KEY INFORMATION

Local Authority: London Borough of Hounslow

Internal Area: 868.00 sq ft

Garden Area: acre(s)

No of Bedrooms: 3



World Waterside Ltd trading as riverhomes for themselves and its clients give notice that 1: They are not authorised to make or give any representations or warranties in relation to the property either here or elsewhere, either on their own behalf or on behalf of their client or otherwise. 2: These particulars do not form part of any offer or contract and must not be relied upon as statements or representations of fact. Any areas, measurements or distances are approximate. The text, photographs and plans are for guidance only and are not necessarily comprehensive. 3: It should not be assumed that the property has all necessary planning, building regulation or other consents and any services, equipment or facilities have not been tested. 4: Lease details, service charges, ground rent (where applicable) and council tax are given as a guide only and should be checked and confirmed by your Solicitor prior to exchange of contracts. 5: They assume no responsibility and any intending purchasers or tenants must satisfy themselves by inspection or otherwise as to the correctness of each of the statements contained within these particulars. If you require clarification of any points please contact us.