

RIVERHOMES

Harts Boatyard
Surbiton KT6

£150,000
Residential mooring



Harts Boatyard Surbiton KT6

Bahati is a 58 ft. steel mini Luxemotor barge replica with a beam of 12 ft., making it ideal for navigating the rivers and canals of Britain. This beautifully crafted inland cruiser, with a steel hull and superstructure was constructed by Pickwell and Arnold in 1998. The interior of Bahati is superbly finished in a traditional English style, reminiscent of a country cottage. She offers a large master bedroom, a twin guest cabin, and shower room with sink and toilet. The saloon is the highlight of the boat, providing a spacious and comfortable living area. Bahati is perfect for those looking for a long-distance inland cruiser that combines traditional charm with modern amenities or a perfect liveaboard in its current location. If you want to slip the ropes and head up river, she has a large water storage, solar power and battery storage, and inboard generator for off grid living. Wherever your journey takes you, this boat offers the comfort and reliability you need for your journey. Harts Boatyard on Portsmouth Road in Surbiton, Greater London, offers a

comprehensive range of services including residential moorings, marina services, and boatyard services to river users. This historic site, established in 1853, has a rich heritage and has now been upgraded to meet modern standards while retaining its timeless charm. The upgrades include floating pontoons, electrics, and a pump-out system, ensuring quality facilities for its users. Ideally situated a mile upstream from the bridge at Kingston upon Thames and directly opposite the grounds of the iconic Hampton Court Palace, this prime location provides easy access to the River Thames, making it perfect for both leisure boating and residential living. Located only a 12 minute walk from Surbiton National Rail Station, Waterloo can be reached by direct train in 20 minutes. The marina's proximity to Kingston upon Thames offers a variety of amenities and attractions, including shopping, dining, and cultural sites.

KEY FEATURES

Residential mooring

58 ft. steel mini Luxemotor barge replica

Gated private pontoon, accessed by private road

Reconditioned Ford D series engine

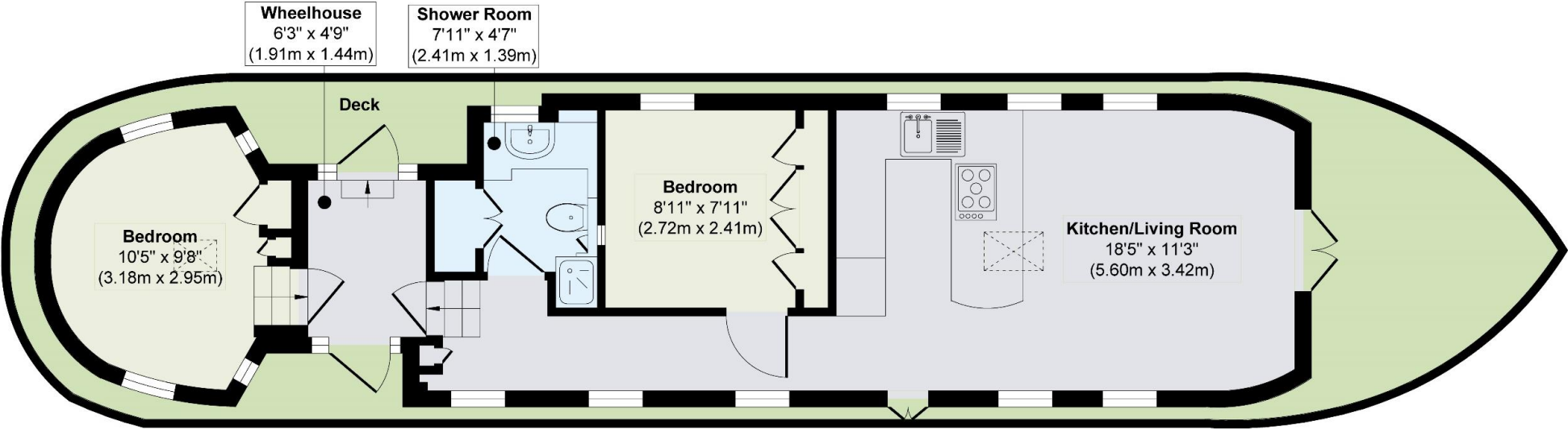
Mooring charge £14,385 approx. per annum.

Parking included with the mooring

Council tax band A







Floor Plan

KEY INFORMATION

Local authority:	Kingston upon Thames
Council tax band:	A
Internal area:	496 sq. ft. / 46.14 sq. m.
No. of bedrooms:	2
Mooring charge:	£14,385 approx. per annum.

World Waterside Ltd trading as riverhomes for themselves and its clients give notice that 1: They are not authorised to make or give any representations or warranties in relation to the property either here or elsewhere, either on their own behalf or on behalf of their client or otherwise. 2: These particulars do not form part of any offer or contract and must not be relied upon as statements or representations of fact. Any areas, measurements or distances are approximate. The text, photographs and plans are for guidance only and are not necessarily comprehensive. 3: It should not be assumed that the property has all necessary planning, building regulation or other consents and any services, equipment or facilities have not been tested. 4: Lease details, service charges, ground rent (where applicable) and council tax are given as a guide only and should be checked and confirmed by your Solicitor prior to exchange of contracts. 5: They assume no responsibility and any intending purchasers or tenants must satisfy themselves by inspection or otherwise as to the correctness of each of the statements contained within these particulars. If you require clarification of any points please contact us.