

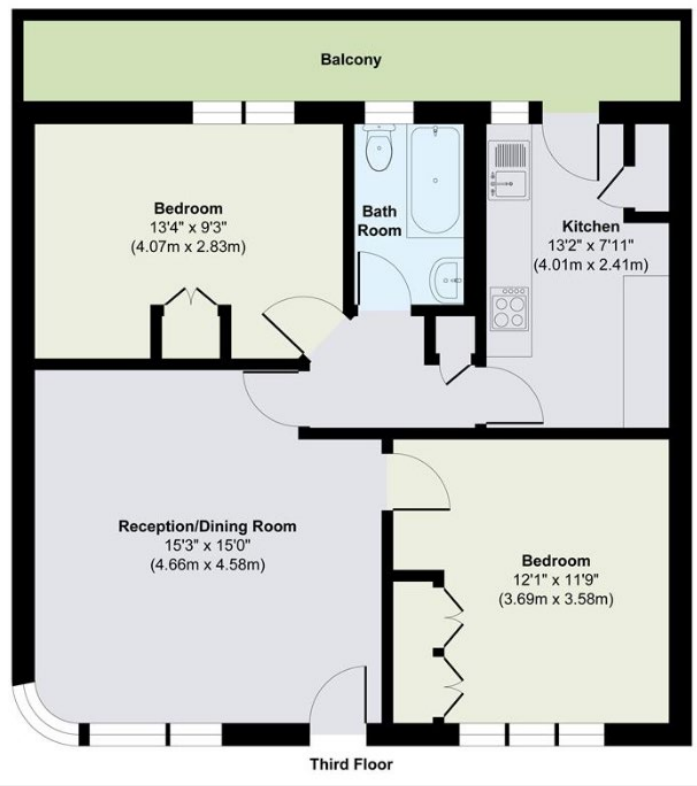
RIVERHOMES

Hartington Court
Chiswick W4

£525,000
Share of Freehold



Set within the iconic Art Deco enclave of Hartington Court, this beautifully refurbished two bedroom apartment occupies a prime corner position on the top floor, offering far-reaching views over the Thames towards Kew and Kew Bridge. Light streams into the spacious reception room, framing the ever-changing river scene beyond. The interiors are elegantly appointed, with a well-considered layout that includes a contemporary fitted kitchen, two generous double bedrooms with built-in wardrobes, and a stylish family bathroom. Residents benefit from secure, unallocated parking and access to a beautifully maintained communal riverside garden. The apartment is perfectly positioned moments from Grove Park and the historic riverside pubs and eateries of Strand on the Green. Council tax band E.



ENERGY PERFORMANCE CERTIFICATE

Score	Energy rating	Current	Potential
92+	A		
81-91	B		
69-80	C		79 C
55-68	D	60 D	
39-54	E		
21-38	F		
1-20	G		

KEY INFORMATION

Local authority:	London Borough of Hounslow
Internal area:	694 sq. ft. / 64.50 sq. m.
No. of bedrooms:	2
Service charge:	£3,568.96 per annum approx.
Reserve charge:	£1,964.30 per annum approx.
Ground rent:	£17.86 per annum approx.