

RIVERHOMES

Strand on the Green
Chiswick W4

£2,500,000
Freehold



Strand on the Green Chiswick W4

An historic opportunity to acquire an exquisite riverside gem on Strand on the Green, brought to market by RiverHomes for the first time in 57 years. A south-facing property with stunning river views, its beautifully proportioned rooms are animated by the changing light reflected from the water. Built in 1690 it retains much of the 17th century atmosphere and detail; original panelling, corner cupboards, stairs, fireplaces, shutters, window seats, floors, historic cellars and even original door hinges.

Fronted by a paved garden on the river and a secluded mature walled garden to the rear. The accommodation totals 2,538 sq. ft. comprises 5 bedrooms, 2 reception rooms, kitchen and flexible studio/workrooms. To the ground floor is the delightful river-facing living room, the kitchen, and cloakroom, with panelled entrance hall. The first floor houses the stunning drawing room with amazing river views, and a double bedroom overlooking the garden with ensuite bathroom.





Strand on the Green Chiswick W4

On the second floor is the lovely river-facing master bedroom, two smaller bedrooms/studies, and a family bathroom. The historic cellars provide a utility room, wine cellar, boiler room, and workroom. The garden further houses a charming two storey annex studio with kitchenette and en suite shower room above a separate garage, and side passage leading out to Thames Road.

Strand on the Green is an idyllic riverside spot well known for its beauty and tranquillity, historic pubs, local sailing, abundant river wildlife, and friendly community. Excellent communications by road and rail (District line, Overground and SW trains), to Heathrow in 20 minutes, or Waterloo in 35 minutes. Good shopping, restaurants etc. in nearby Chiswick High road. Viewing is highly recommended: This really is a unique, once in a lifetime opportunity.

KEY FEATURES

Grade II listed 17th Century town house

Retaining many period features

5 bedrooms

Separate studio annex

Historic cellars

Garage

Excellent local transport links

Council tax band H

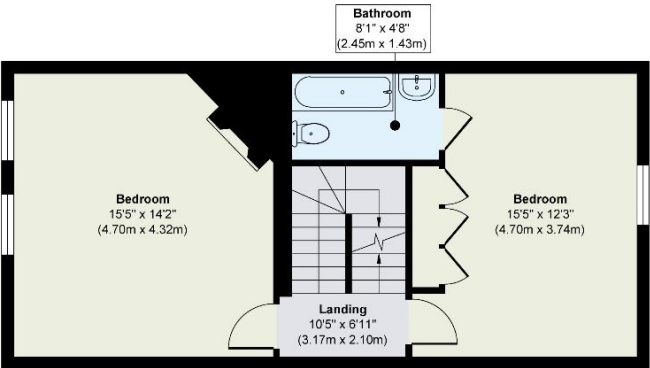
EPC exempt



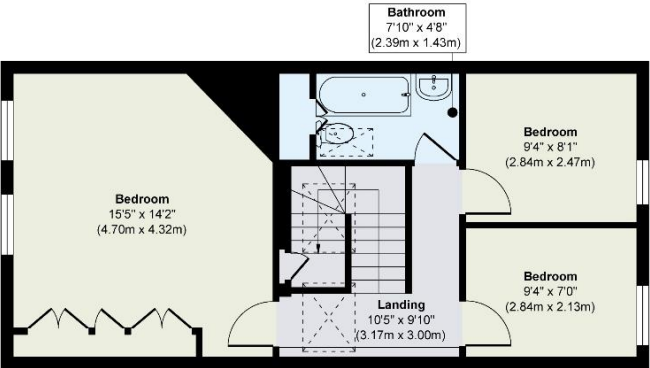


Strand on the Green
Chiswick W4

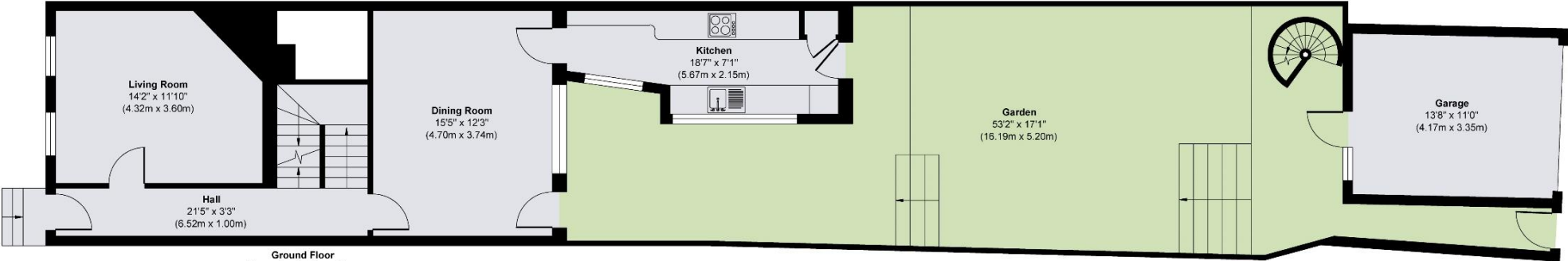
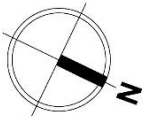
£2,500,000
Freehold



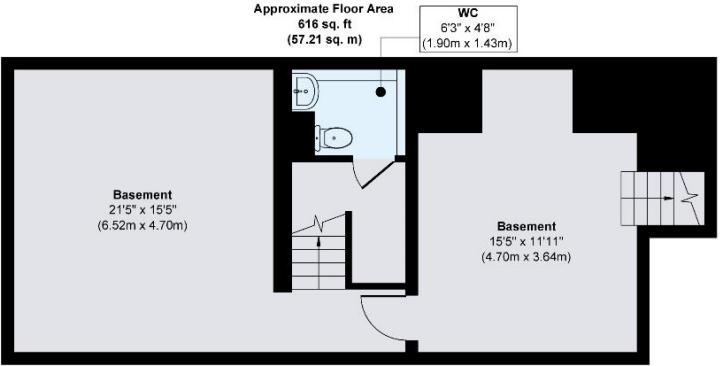
First Floor
Approximate Floor Area
524 sq. ft
(48.70 sq. m)



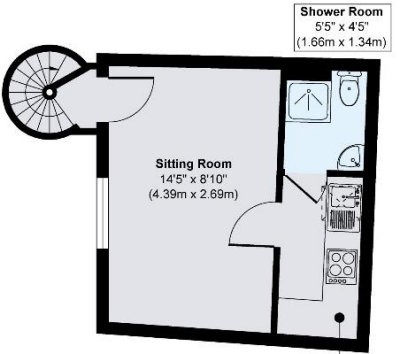
Second Floor
Approximate Floor Area
524 sq. ft
(48.70 sq. m)



Ground Floor
Approximate Floor Area
616 sq. ft
(57.21 sq. m)



Basement
Approximate Floor Area
524 sq. ft
(48.70 sq. m)



Studio Apartment
Approximate Floor Area
198 sq. ft
(18.36 sq. m)

Garage Ground Floor
Approximate Floor Area
152 sq. ft
(14.20 sq. m)

KEY INFORMATION

Local authority:	London Borough of Hounslow
Internal area:	2,538 sq. ft. / 235.87 sq. m.
Council Tax Band:	H
No. of bedrooms:	5



RIVERHOMES

West London Branch
28 Thames Road
London
W4 3RJ

020 8995 0500
www.riverhomes.co.uk



World Waterside Ltd trading as riverhomes for themselves and its clients give notice that 1: They are not authorised to make or give any representations or warranties in relation to the property either here or elsewhere, either on their own behalf or on behalf of their client or otherwise. 2: These particulars do not form part of any offer or contract and must not be relied upon as statements or representations of fact. Any areas, measurements or distances are approximate. The text, photographs and plans are for guidance only and are not necessarily comprehensive. 3: It should not be assumed that the property has all necessary planning, building regulation or other consents and any services, equipment or facilities have not been tested. 4: Lease details, service charges, ground rent (where applicable) and council tax are given as a guide only and should be checked and confirmed by your Solicitor prior to exchange of contracts. 5: They assume no responsibility and any intending purchasers or tenants must satisfy themselves by inspection or otherwise as to the correctness of each of the statements contained within these particulars. If you require clarification of any points please contact us.