

RIVERHOMES

Chiswick Quay Marina
Chiswick W4

£1,650,000
Freehold



Chiswick Quay Chiswick W4

Positioned at the water's edge in Chiswick Quay Marina, this beautifully reimagined six-bedroom townhouse unfolds across 2,581 sq. ft. of elegant, light-filled living space. With sweeping lateral views over the River Thames and a carefully considered, contemporary interior, the home offers a seamless connection between inside and out. Set at the end of a peaceful cul-de-sac, the house benefits from off-street parking for two cars, along with an electric vehicle charging point and a dedicated space for bicycles. The former garage has been thoughtfully reconfigured to

create a versatile music room and snug/media lounge, complemented by a generous utility area and a discreetly positioned cloakroom. On the first floor, a sleek, modern kitchen extends into an inviting dining space, with steps leading down to a secondary dining area and a private terrace overlooking the marina. The second floor hosts four beautifully appointed double bedrooms, one with an en suite shower room, alongside a tranquil family bathroom. Above, the top floor is dedicated to the principal suite, complete with a dressing room, en suite, and a private roof terrace.

KEY FEATURES

Six bedroom townhouse

Sweeping lateral views over the River Thames

Versatile music room

Electric vehicle charging point

Off-street parking

Private roof terrace





ENERGY PERFORMANCE CERTIFICATE

Score	Energy rating	Current	Potential
92+	A		
81-91	B		
69-80	C		78 C
55-68	D	64 D	
39-54	E		
21-38	F		
1-20	G		

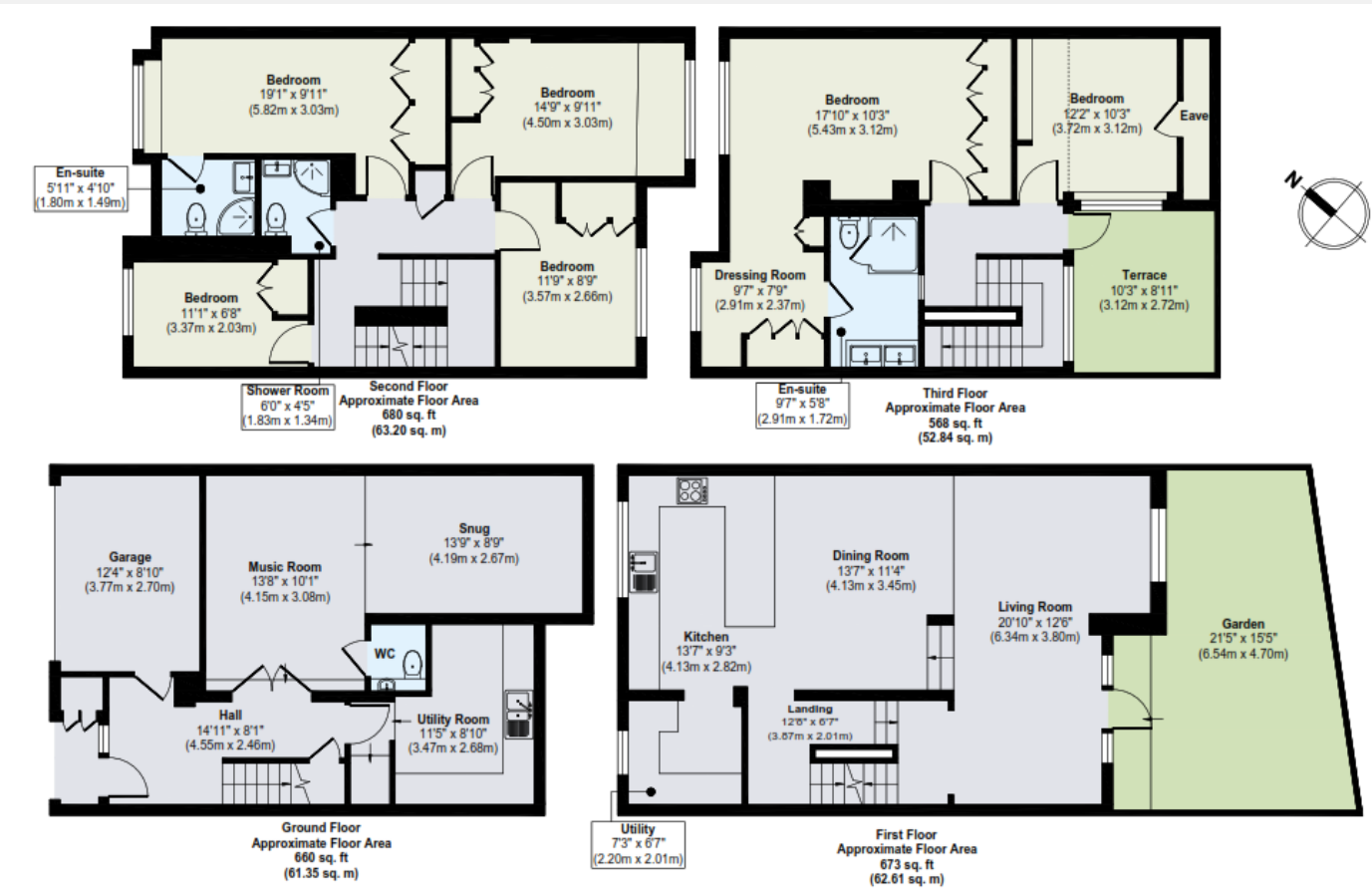
KEY INFORMATION

Local authority: London Borough of Hounslow

Internal area: 2,581 sq. ft. / 240 sq. m.

No. of bedrooms: 6

Local council tax: G



World Waterside Ltd trading as riverhomes for themselves and its clients give notice that 1: They are not authorised to make or give any representations or warranties in relation to the property either here or elsewhere, either on their own behalf or on behalf of their client or otherwise. 2: These particulars do not form part of any offer or contract and must not be relied upon as statements or representations of fact. Any areas, measurements or distances are approximate. The text, photographs and plans are for guidance only and are not necessarily comprehensive. 3: It should not be assumed that the property has all necessary planning, building regulation or other consents and any services, equipment or facilities have not been tested. 4: Lease details, service charges, ground rent (where applicable) and council tax are given as a guide only and should be checked and confirmed by your Solicitor prior to exchange of contracts. 5: They assume no responsibility and any intending purchasers or tenants must satisfy themselves by inspection or otherwise as to the correctness of each of the statements contained within these particulars. If you require clarification of any points please contact us.