

RIVERHOMES

Shakespeare Marina
Stratford-upon-Avon CV37

£198,000
Leisure mooring



Shakespeare Marina Stratford-upon-Avon CV37

A different kind of home from home. This M Series vessel is 12 m. long and 4.5 m. wide, this model has been designed to give maximum interior space, while still fitting within a standard marina berth and with the added bonus of a 2 m. balcony front and rear ideal for al fresco entertaining. Glass windows along the full width of the front, with sliding doors for access, creates a bright airy living / dining / kitchen space bathed in natural light. The M350 can either have one larger master bedroom, or a double and a separate single bedroom layout.

The kitchen, bathroom and other internal fittings are of high specification, ensuring the same standard of living on water as on land.





Shakespeare Marina Stratford-upon-Avon CV37

Shakespeare Marina, located in the heart of Stratford-upon-Avon, offers a picturesque and tranquil setting for boat owners and visitors alike. This modern, purpose-built marina features 250 berths, each equipped with water and electricity hook-ups. The marina provides a range of excellent facilities, including showers, toilets, laundry services, and free Wi-Fi. Surrounded by the historic charm of Stratford-upon-Avon, home to the famous playwright William Shakespeare, the marina is ideally situated for exploring the local area and enjoying the cultural

and historical attractions. With easy access to the River Avon, Shakespeare Marina is perfect for boating enthusiasts looking for a serene and well-equipped mooring spot.

No council tax - Leisure mooring.
Mooring charge £6,418 approx. per annum.

KEY FEATURES

New Build

One bedroom houseboat

Full kitchen

Shower room

Two balconies

Picturesque and tranquil setting





Shakespeare Marina

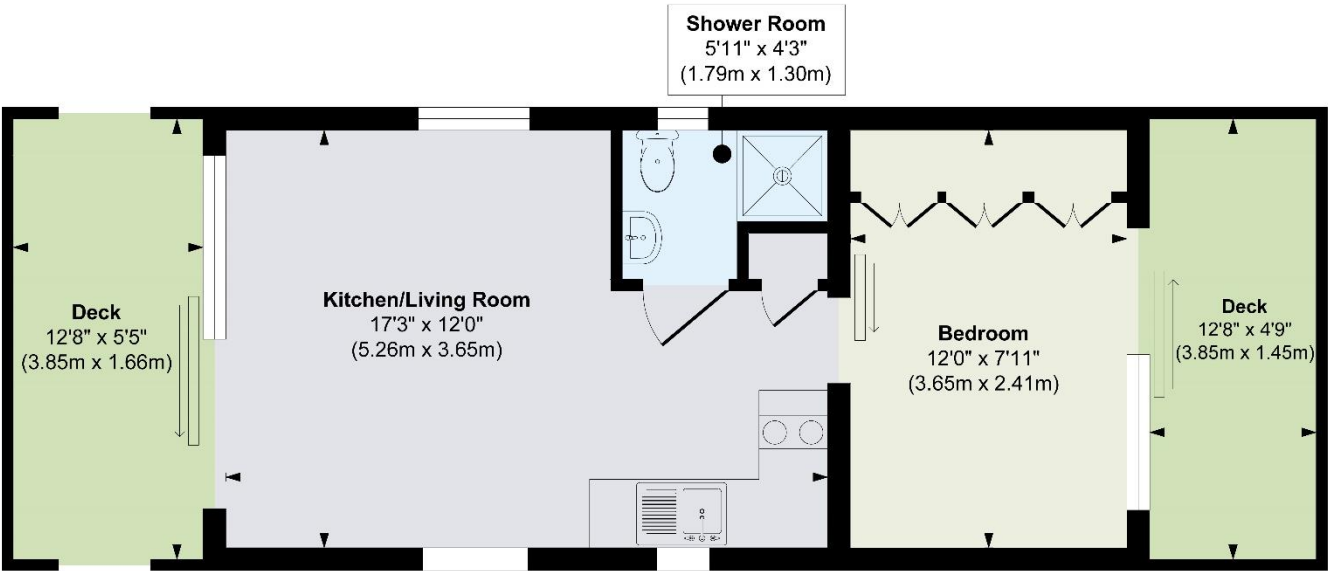
Stratford-upon-Avon CV37

£198,000

Leisure mooring



KEY INFORMATION	
Local authority:	Stratford-upon-Avon
Internal area:	309 sq. ft. / 28.72 sq. m.
No. of bedrooms:	1
Mooring charge:	£6,418 approx. per annum



Floor Plan
Approximate Floor Area
309 sq. ft
(28.72 sq. m)



