





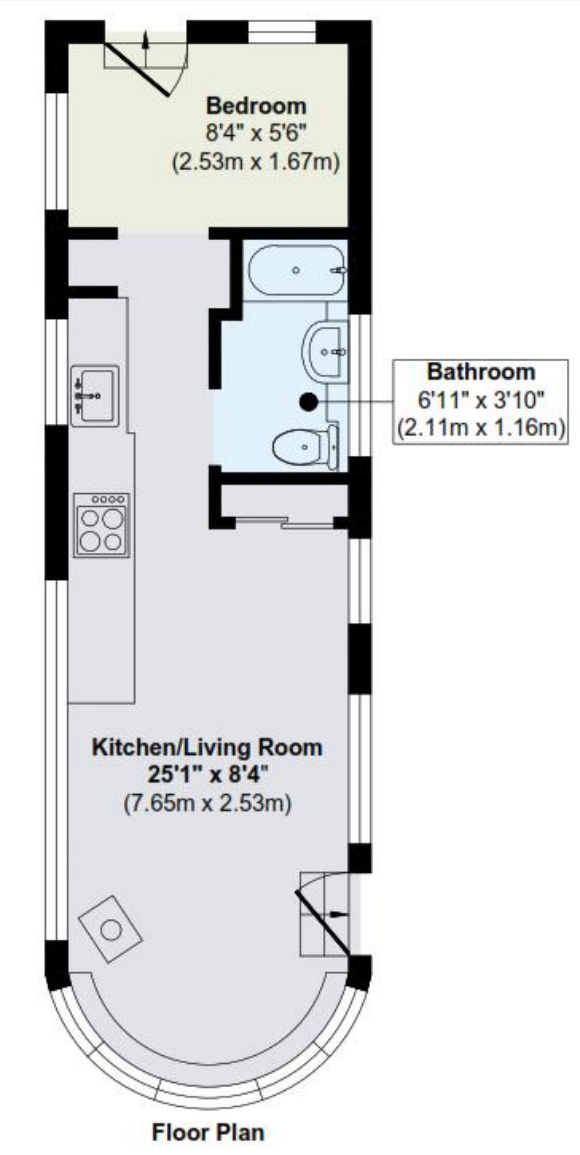
Presenting a beautifully maintained 40 foot by 12 foot navigable Caribbean Cruiser houseboat, crafted in 1969 from fibreglass and currently moored on a residential licence in Kingston upon Thames. This tranquil mooring offers serene views across to Canbury Park while placing you mere moments from Kingston’s vibrant array of shops, restaurants, bars and the renowned Rose Theatre.

The mooring is equipped with essential mains utilities including water, waste, electricity and telephone/broadband ensuring modern comforts while living on the water. Inside you’ll find a double cabin; an open-plan saloon that seamlessly blends a modern kitchen and living space, complete with a charming log burning fire, induction hob, fan oven and dishwasher; and a separate bathroom featuring a shower over the bath and flushing toilet. The decor exudes a calming atmosphere making this houseboat an inviting home or a perfect pied-à-terre.

With 249 square feet of living accommodation, please note that head height in the bedroom is restricted. This striking vessel, set in an exceptional location, is not to be missed. Council tax band A applies and mooring and maintenance fees are approximately £645 per month, covering access to communal shower and toilet facilities as well as water supply rates.

Please be aware that floating homes cannot be purchased with a mortgage.

KEY INFORMATION	
Local authority:	London Borough of Richmond upon Thames
Internal area:	249 sq. ft. / 23.18 sq. m.
No. of bedrooms:	1
Council tax band:	A



World Waterside Ltd trading as riverhomes for themselves and its clients give notice that 1: They are not authorised to make or give any representations or warranties in relation to the property either here or elsewhere, either on their own behalf or on behalf of their client or otherwise. 2: These particulars do not form part of any offer or contract and must not be relied upon as statements or representations of fact. Any areas, measurements or distances are approximate. The text, photographs and plans are for guidance only and are not necessarily comprehensive. 3: It should not be assumed that the property has all necessary planning, building regulation or other consents and any services, equipment or facilities have not been tested. 4: Lease details, service charges, ground rent (where applicable) and council tax are given as a guide only and should be checked and confirmed by your Solicitor prior to exchange of contracts. 5: They assume no responsibility and any intending purchasers or tenants must satisfy themselves by inspection or otherwise as to the correctness of each of the statements contained within these particulars. If you require clarification of any points please contact us.