

RIVERHOMES

Chapel House
Brentford TW8

£900,000
Freehold



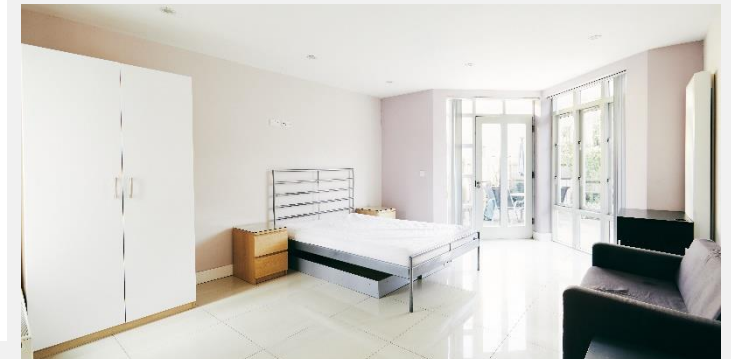
RIVERHOMES

West London Branch
28 Thames Road
London
W4 3RJ

020 8995 0500
www.riverhomes.co.uk

A unique opportunity to purchase this superb eco home with solar panels and rainwater harvesting system offering circa 2,000 sq. ft. of living accommodation, with the added benefits of a south facing rear garden, bicycle shed and off-street parking for several vehicles via the double integral garage. The house has a contemporary feel throughout and provides generous, well-balanced proportions with four double bedrooms, a modern family bathroom and separate shower room, ground floor cloakroom, reception room with door to rear garden and a fitted kitchen/breakfast room also with door leading to rear garden. Offered to the market with no onward chain.

From Kew Bridge to Brentford – regeneration is breathing new life into the heart of West London bringing a new riverside town centre incorporating a revitalised high street with all the amenities desired for modern living, with a selection of market-leading retailers alongside a supermarket, boutique cinema and traditional shops such as Hammonds Delicatessen at Kew Bridge. Down by the water, an array of restaurants, cafes and pubs will line the frontage, creating a dynamic culinary offering. Extensions to the Thames path will open up new walking routes along the water's edge. The River Thames and Watermans Park are also moments away from the property. The M4, North and South circular are nearby for access in and out of London. Kew Bridge National Rail Station provides access into Waterloo. There are also 65, 237 & 267 bus routes nearby. EPC rating B.



KEY INFORMATION

Local authority:	London Borough of Hounslow
Internal area:	2,027 sq. ft. / 188.34 sq. m.
Tenure:	Freehold

World Waterside Ltd trading as riverhomes for themselves and its clients give notice that 1: They are not authorised to make or give any representations or warranties in relation to the property either here or elsewhere, either on their own behalf or on behalf of their client or otherwise. 2: These particulars do not form part of any offer or contract and must not be relied upon as statements or representations of fact. Any areas, measurements or distances are approximate. The text, photographs and plans are for guidance only and are not necessarily comprehensive. 3: It should not be assumed that the property has all necessary planning, building regulation or other consents and any services, equipment or facilities have not been tested. 4: Lease details, service charges, ground rent (where applicable) and council tax are given as a guide only and should be checked and confirmed by your Solicitor prior to exchange of contracts. 5: They assume no responsibility and any intending purchasers or tenants must satisfy themselves by inspection or otherwise as to the correctness of each of the statements contained within these particulars. If you require clarification of any points please contact us.