

RIVERHOMES

Victoria Steps Quay
Brentford TW8

£1,000,000
Share of Freehold



Victoria Steps Quay Brentford TW8

A rare opportunity to acquire this beautifully converted 110 ft. x 18 ft. residential Dutch Barge offering in excess of 2,100 sq. ft. of internal living accommodation. Located within the sought-after Victoria Steps Quay, this Share of Freehold opportunity includes riverside land, allocated parking, storage, office, garden workshop with comparatively low mooring fees at £4,050 per annum. The boat itself has four cabins (all with

fitted cupboards and en suite shower room to the primary), an expansive open-plan kitchen/reception with porthole windows at water level affording views of the Thames towards Kew Bridge and a custom built/designed industrial style feature staircase, a contemporary bathroom, an extended and stripped out wheelhouse with panoramic views towards Kew Bridge.





Victoria Steps Quay Brentford TW8

Further benefits include mains gas, electricity, water and sewage connections and a section of the barge that can be a self-contained studio with the potential to generate a rental income in the region of £1,100 per calendar month. The barge was last surveyed in 2021, had its hull re-blackened and exterior epoxy coated in 2021 at the same

time as survey docking. Victoria Steps Quay is also only a short walk away from the many pubs and restaurants of Kew & Chiswick areas, with main transport links being the Kew Bridge National Rail Station and the A4/M4. Council Tax band A.

KEY FEATURES

Residential Dutch Barge

Includes riverside land, allocated parking, storage, office, garden workshop

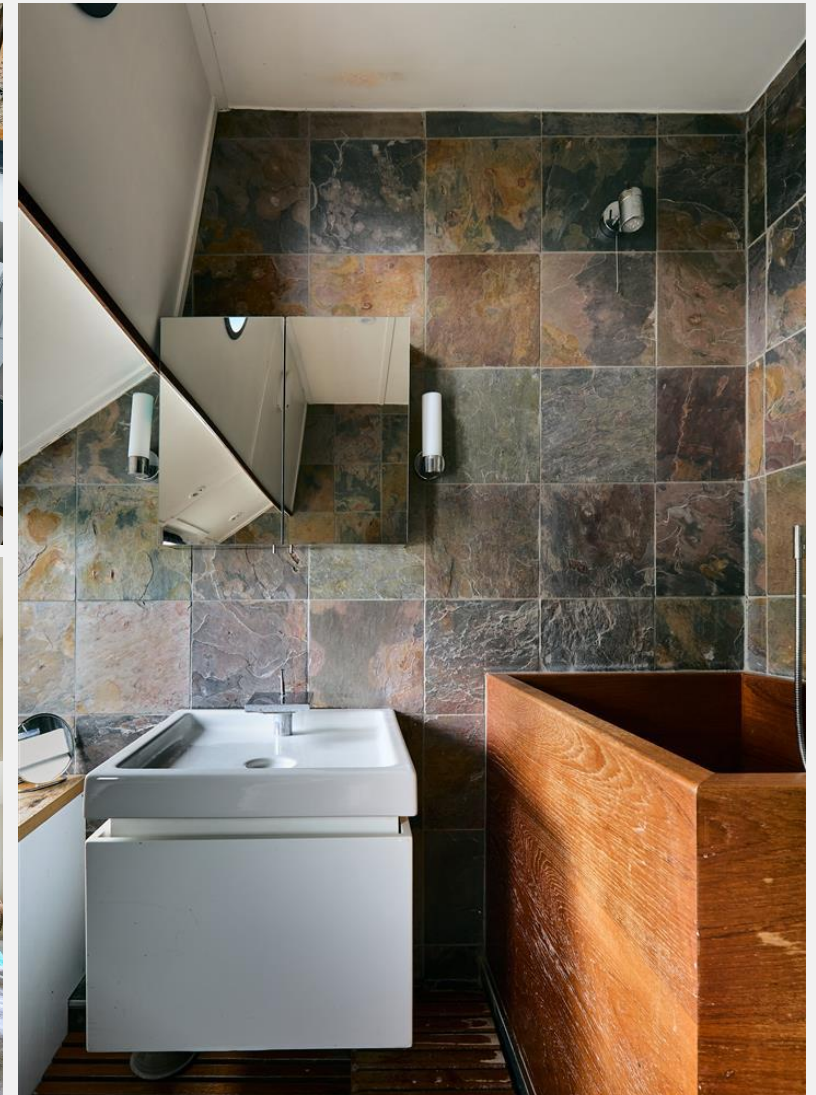
Four cabins

An expansive open-plan kitchen/reception

A custom built/designed industrial style feature staircase

Mains gas, electricity, water and sewage connections

A self-contained studio



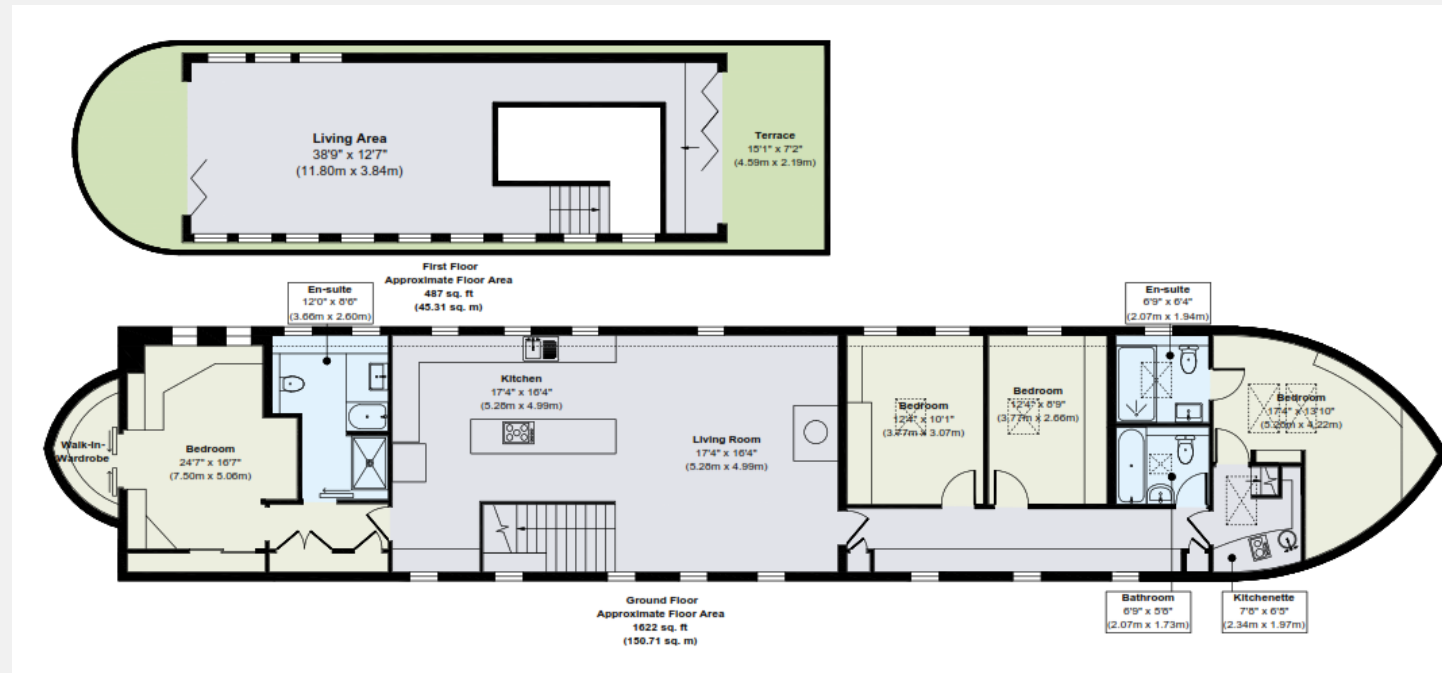


**Victoria Steps Quay
Brentford TW8**

£1,000,000
Share of Freehold

KEY INFORMATION

Local authority: London Borough of Hounslow
Internal area: 2,109 sq. ft. / 196.02 sq. m.
No. of bedrooms: 4
Council tax band: A





RIVERHOMES

West London Branch
28 Thames Road
London
W4 3RJ

020 8995 0500
www.riverhomes.co.uk



World Waterside Ltd trading as riverhomes for themselves and its clients give notice that 1: They are not authorised to make or give any representations or warranties in relation to the property either here or elsewhere, either on their own behalf or on behalf of their client or otherwise. 2: These particulars do not form part of any offer or contract and must not be relied upon as statements or representations of fact. Any areas, measurements or distances are approximate. The text, photographs and plans are for guidance only and are not necessarily comprehensive. 3: It should not be assumed that the property has all necessary planning, building regulation or other consents and any services, equipment or facilities have not been tested. 4: Lease details, service charges, ground rent (where applicable) and council tax are given as a guide only and should be checked and confirmed by your Solicitor prior to exchange of contracts. 5: They assume no responsibility and any intending purchasers or tenants must satisfy themselves by inspection or otherwise as to the correctness of each of the statements contained within these particulars. If you require clarification of any points please contact us.