

# RIVERHOMES

Russell Road  
Shepperton TW17

£270,000  
Freehold

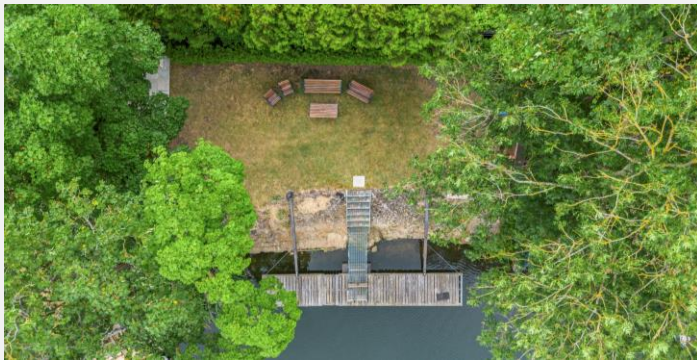


# RIVERHOMES

Greater London Branch  
75 High Street  
Teddington  
TW11 8HG

020 8977 4500  
[www.riverhomes.co.uk](http://www.riverhomes.co.uk)

This freehold riverside plot offers exceptional privacy with high hedging and a large, levelled lawned area elevated above the river. With fantastic views, it's the perfect space for entertaining. The plot features a pontoon accessed via a cantilevered walkway, capable of mooring a boat up to forty feet. This tranquil setting is ideal for permanently mooring your boat for cruising or staying overnight or even longer as there are no restrictions. After a hard day's work, you can take out canoes or paddleboards to enjoy the river or simply relax and appreciate the view from the land. The plot includes a roadside entrance with easy parking, broadband, mains water and electricity. Shepperton is a picturesque town situated on the River Thames, known for its tranquil setting and vibrant community. This sought-after location offers a blend of peaceful living and convenient access to amenities. With its scenic views, excellent transport links, and close proximity to local shops, restaurants, and recreational facilities, Shepperton provides a perfect balance of relaxation and convenience.



## KEY INFORMATION

**Local authority:** Spelthorne  
**Area:** 0.06 acres approx.  
**Business rates:** £0 per annum

