

RIVERHOMES

Ferry Lane
Brentford TW8

£449,950
Leasehold



RIVERHOMES

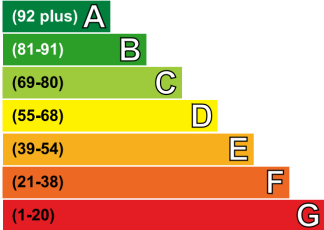
West London Branch
28 Thames Road
London
W4 3RJ

020 8995 0500
www.riverhomes.co.uk

An exceptionally stylish 1,045 sq. ft. duplex penthouse apartment situated within the modern Ferry Quays riverside development. The property is elegantly arranged over the fourth and fifth floors, comprising a spacious reception / dining room with a fully glazed west-facing front aspect with river views, semi open-plan kitchen, master bedroom with en suite bathroom, second double bedroom, shower room and cloakroom. Ferry Quays benefits from on-site daily portorage and secure underground parking. Brentford National Rail station is close by and the motorist will find convenient access to the A4 / M4 four routes both in and out of London and Heathrow Airport. Council tax band F.

ENERGY PERFORMANCE CERTIFICATE

Very energy efficient - lower running costs

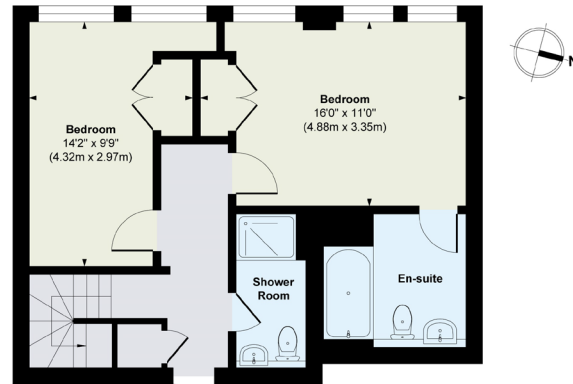


Not energy efficient - higher running costs

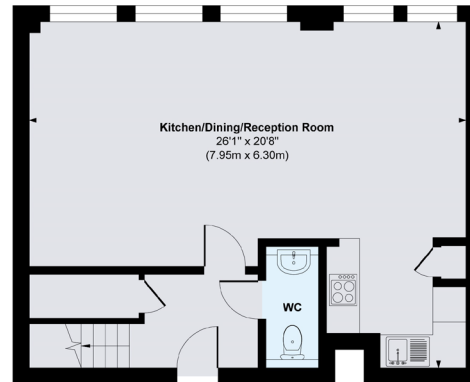
	Current	Potential
	82	82

KEY INFORMATION

Local authority:	London Borough of Hounslow
Internal area:	1,045 sq. ft. / 97.08 sq. m.
Service charge:	£3,240.00 per annum approx.
Estate service:	£823.00 per annum approx.
Car park:	£410.00 per annum approx.
Ground rent:	£225.00 per annum approx.



Fifth Floor
Approximate Floor Area
518 sq. ft
(48.08 sq. m)



Fourth Floor
Approximate Floor Area
527 sq. ft
(49.00 sq. m)

