

RIVERHOMES

Hyperion Tower
Brentford TW8

£6,500 per month
Flexible furnishings



Hyperion Tower Brentford TW8

A spectacular sub-penthouse apartment in the popular Kew Bridge West development. This apartment sits in the central tower of the development – Hyperion. The apartment exudes elegance and provides a 29 ft. double aspect living space incorporating the state-of-the-art kitchen / dining area and living room with access out to the terrace enjoying panoramic views of the River Thames and London cityscape. There is a double aspect master suite with built-in wardrobes and en suite bathroom with a separate shower enclosure, two further double bedrooms and a separate family / guest bathroom. There is private and secure underground parking, a fully equipped gym suite for use of the residents, on-site concierge and the apartment is a stone's throw from Kew Bridge Station. Direct links into Waterloo take 30 minutes. A truly opulent opportunity to reside in this prestigious apartment and development.

KEY FEATURES

3 bedrooms

3 bathrooms

Panoramic river views from the terrace

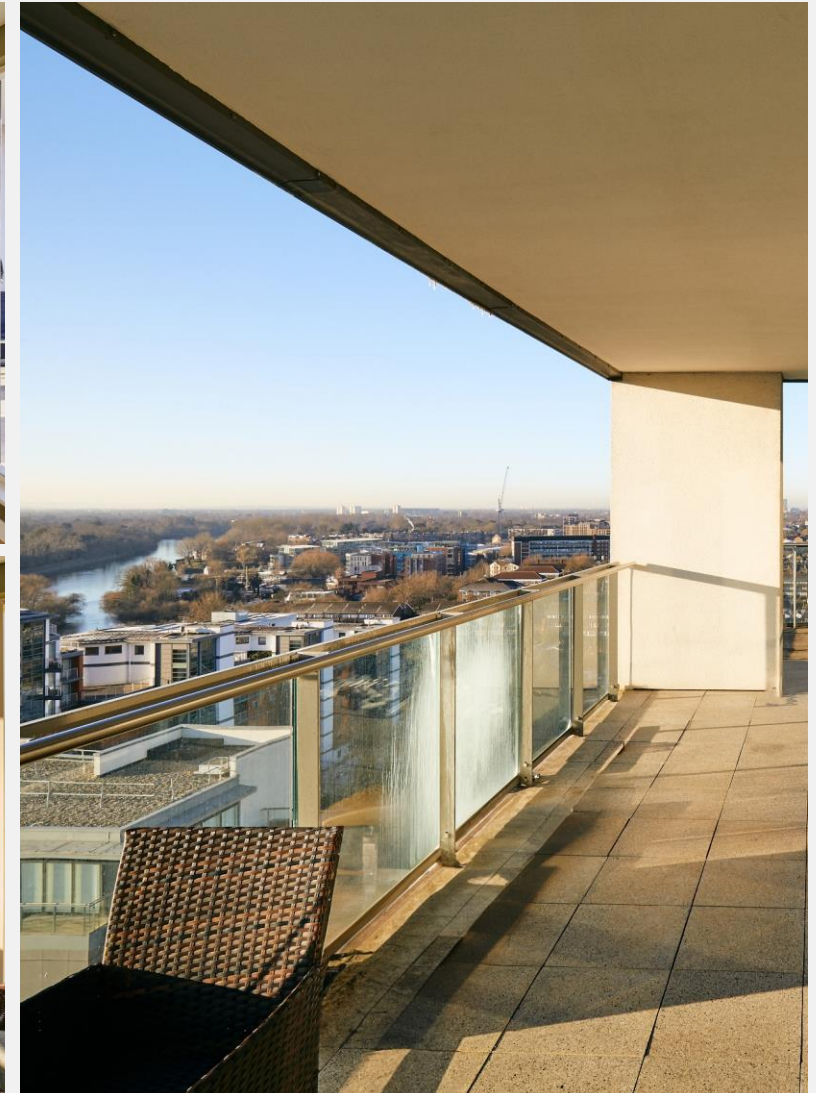
Double aspect living space and master bedroom

Secure underground parking

Residents' gym suite

On-site concierge

Transport links via Kew Bridge Station





ENERGY PERFORMANCE CERTIFICATE

Score	Energy rating	Current	Potential
92+	A		
81-91	B		
69-80	C		
55-68	D	67 D	67 D
39-54	E		
21-38	F		
1-20	G		

KEY INFORMATION

Local authority:	London Borough of Hounslow
Internal area:	1,512 sq. ft. / 140.50 sq. m.
Available from:	Immediately
Council tax band:	G
No. of bedrooms:	3

