

# RIVERHOMES

Bates Wharf  
Chertsey KT16

£501,600  
Leisure mooring



## Bates Wharf Chertsey KT16

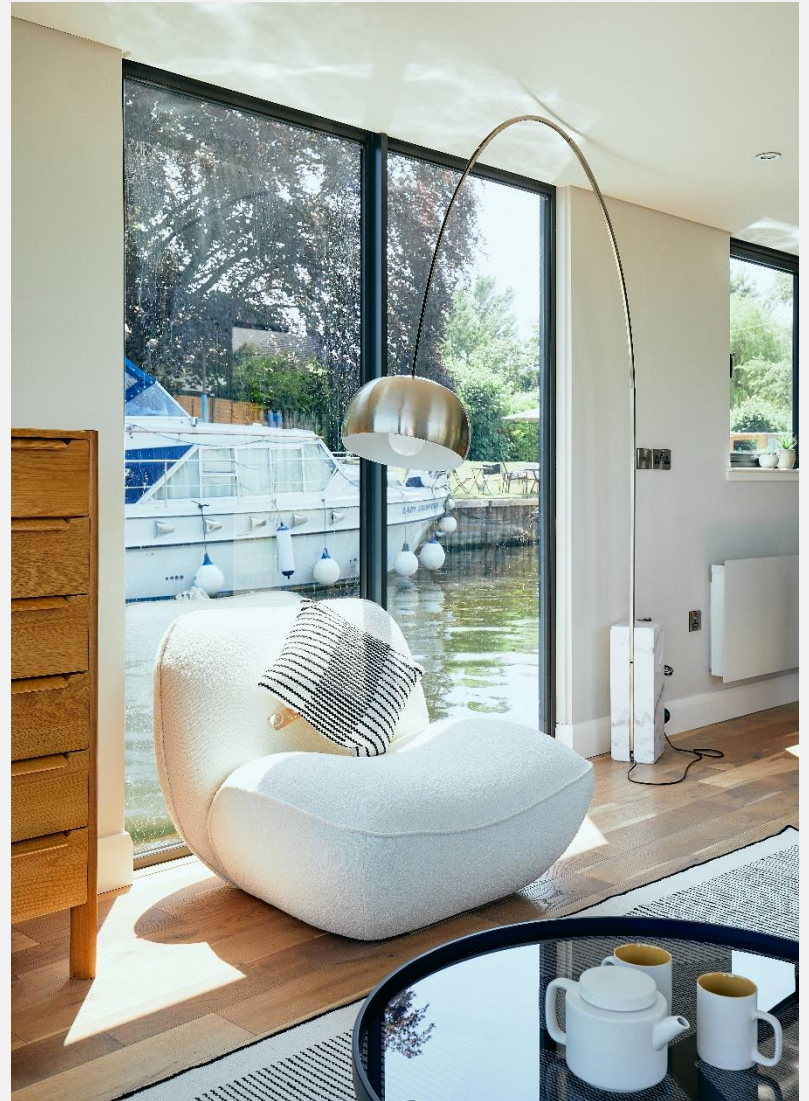
The R750 is a one-of-a-kind contemporary classic houseboat, with 730 sq. ft. of living space, housing two bedrooms, one bathroom, a capacious lounge and kitchen, plus an impressive rooftop garden.

All the best aspects of land and water living together in one unforgettable lifestyle experience. Fitted out to the highest specifications, from solid timber flooring and flush core internal doors, to PPC aluminium windows. The large kitchen/dining

and living area, finished to the highest specification – and complete with double doors that open onto the spacious veranda – makes this a great space for both relaxing and entertaining. Two interior-designed bedrooms complete with fitted wardrobes and all of life's everyday luxuries.

The bathroom is finished to the highest standards, with an exhaustive supply of hot water when required, a spacious shower, heated towel rails and flushing toilets making for an incredibly indulgent experience.





## Bates Wharf Chertsey KT16

As well as a spacious front terrace leading directly from the lounge, also a roof top terrace creating up to 500 sq. ft. of elevated garden.

Bates Wharf is a charming 110 berth marina situated amongst open meadow land on the River Thames. Chertsey is a town in Surrey, on the River Thames and its tributary rivers such as the River Bourne. It can be accessed by road from junction 11 of the M25.

It shares borders with Staines, Laleham, Shepperton, Addlestone, Woking, Thorpe and Egham. Bates Wharf lies 20 miles southwest of central London, close to the M3 and the M25. The town is served by Chertsey railway station. It is located on the Chertsey branch of the Waterloo to Reading Line which is operated by South West Trains.

### KEY FEATURES

**New Build**

**Two bedroom houseboat**

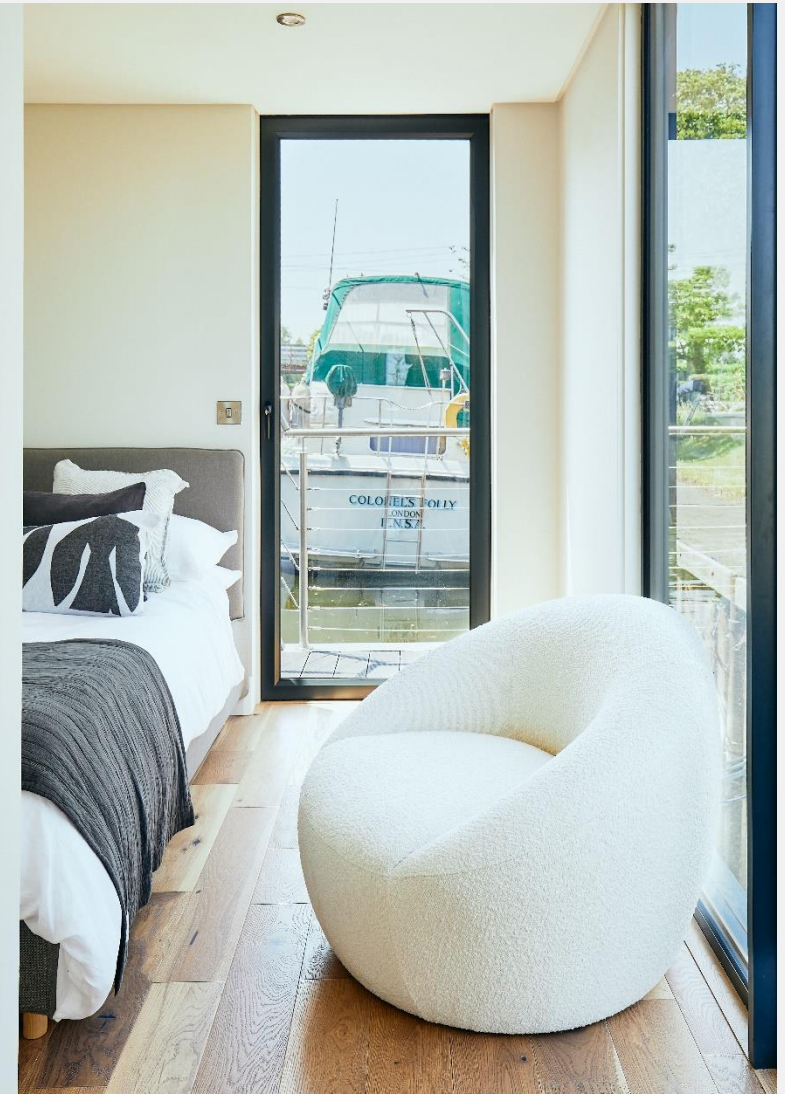
**Full kitchen**

**Shower room**

**Two balconies**

**Stunning roof terrace**

**Charming marina amongst open meadow**





**Bates Wharf**  
**Chertsey KT16**

£501,600  
Leisure mooring

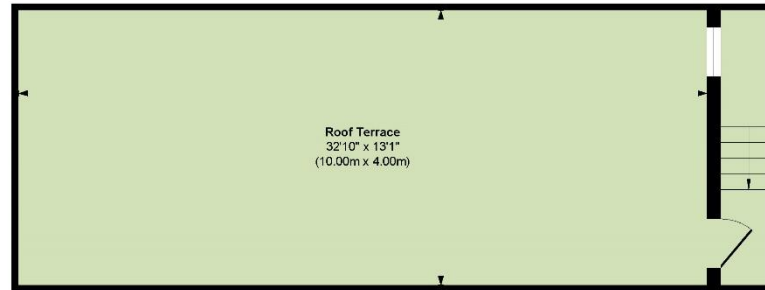
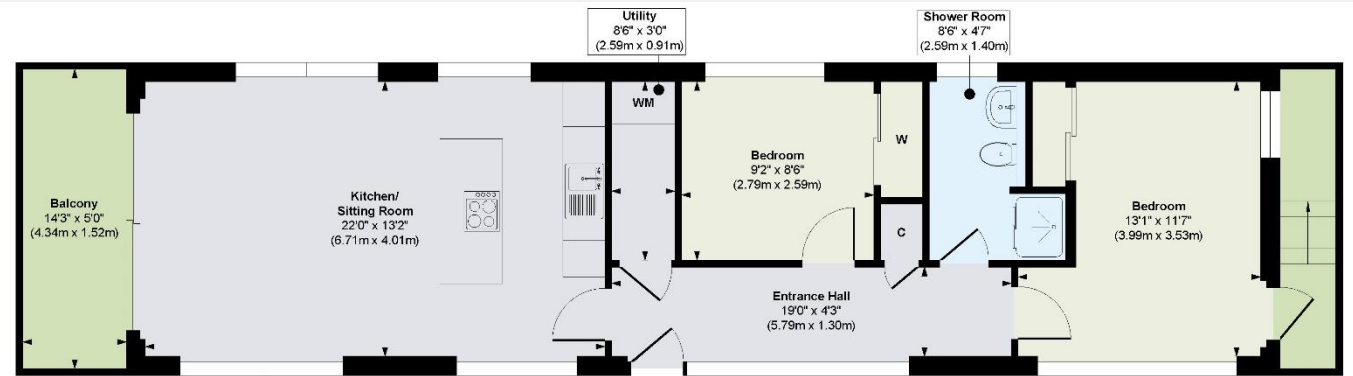
**KEY INFORMATION**

**Local authority:** Runnymede Borough Council

**Internal area:** 730 sq. ft. / 67.81 sq. m.

**No. of bedrooms:** 2

**Council tax band:** Exempt – Leisure mooring





# RIVERHOMES

Greater London Branch  
75 High Street  
Teddington  
TW11 8HG

020 8977 4500  
[www.riverhomes.co.uk](http://www.riverhomes.co.uk)



World Waterside Ltd trading as riverhomes for themselves and its clients give notice that 1: They are not authorised to make or give any representations or warranties in relation to the property either here or elsewhere, either on their own behalf or on behalf of their client or otherwise. 2: These particulars do not form part of any offer or contract and must not be relied upon as statements or representations of fact. Any areas, measurements or distances are approximate. The text, photographs and plans are for guidance only and are not necessarily comprehensive. 3: It should not be assumed that the property has all necessary planning, building regulation or other consents and any services, equipment or facilities have not been tested. 4: Lease details, service charges, ground rent (where applicable) and council tax are given as a guide only and should be checked and confirmed by your Solicitor prior to exchange of contracts. 5: They assume no responsibility and any intending purchasers or tenants must satisfy themselves by inspection or otherwise as to the correctness of each of the statements contained within these particulars. If you require clarification of any points please contact us.