

# RIVERHOMES

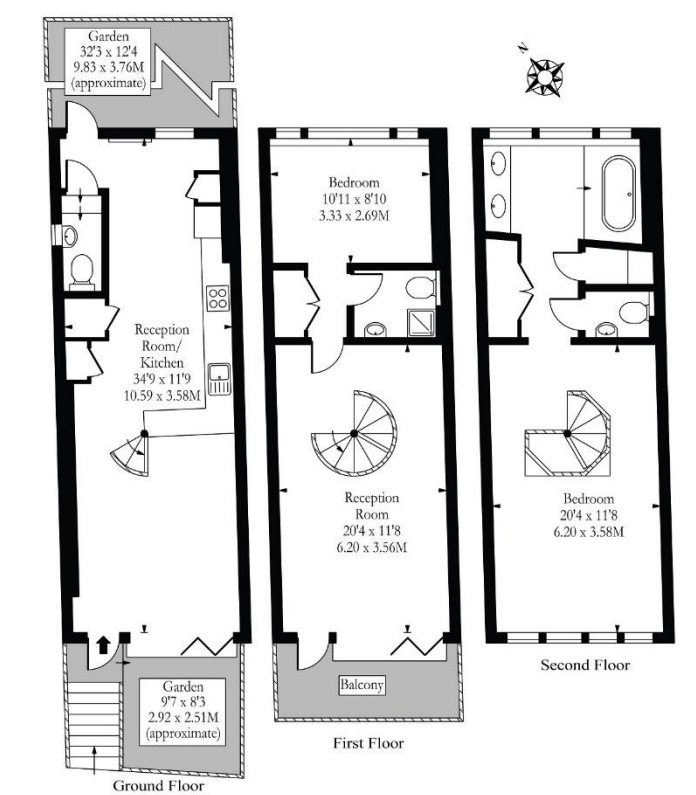
Strand on The Green  
Chiswick W4

£692 per week  
Unfurnished





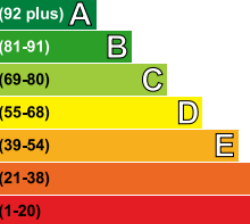
A rare opportunity to rent this spectacular river fronting house on the much sought-after Strand on the Green. Spread over three levels, the ground floor provides a large open-plan reception room with bi-folding doors onto a south-facing terrace offering amazing views over the River Thames. The fully-fitted kitchen is located to the rear with a ground floor cloakroom and doors onto a walled patio garden. A central spiral staircase leads to the first floor which offers a good size reception room with bi-folding doors onto a riverside balcony, double bedroom with fitted wardrobes to the rear and a shower room. The second floor hosts the master suite, once again with stunning views of the River Thames, fitted wardrobes and a good size bathroom with freestanding bath and separate toilet. Further benefits include air conditioning in the reception and master bedroom. This rarely available property should be viewed immediately to avoid disappointment.



ENERGY PERFORMANCE CERTIFICATE

Energy Efficiency Rating

Very energy efficient - lower running costs



Current	Potential
63	84

Not energy efficient - higher running costs

KEY INFORMATION

**Local authority:** London Borough of Hounslow  
**Internal area:** 1,208 sq. ft. / 112.23 sq. m.  
**Available from:** January 2022