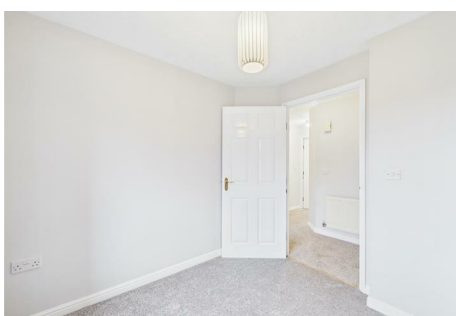


# SOLIHULL RESIDENTIAL LETTINGS



## 28 Wharf Lane Solihull, B91 2LE

This beautifully presented 1st floor unfurnished apartment is set on a well-regarded development.

It is immaculate ensuring a clean, well-maintained, and inviting living space.

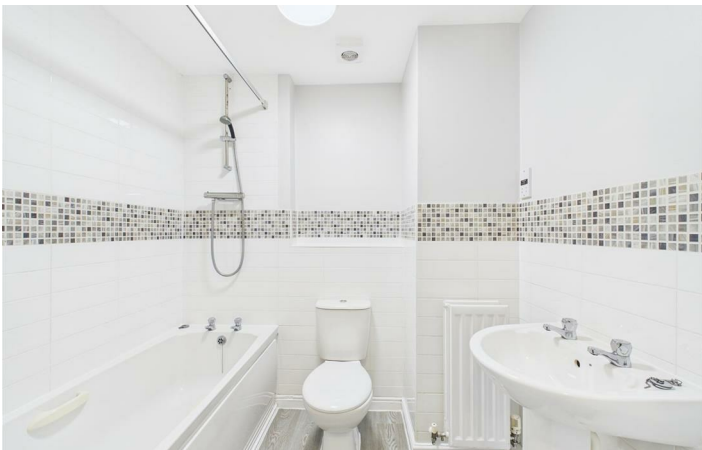
Residents have access to well-maintained communal gardens, providing a tranquil and aesthetically pleasing environment.

The property is walking distance to Solihull Town Centre is a significant advantage, providing residents with access to a wide range of services, including shopping, dining, entertainment, and other amenities.

£1,095 PCM

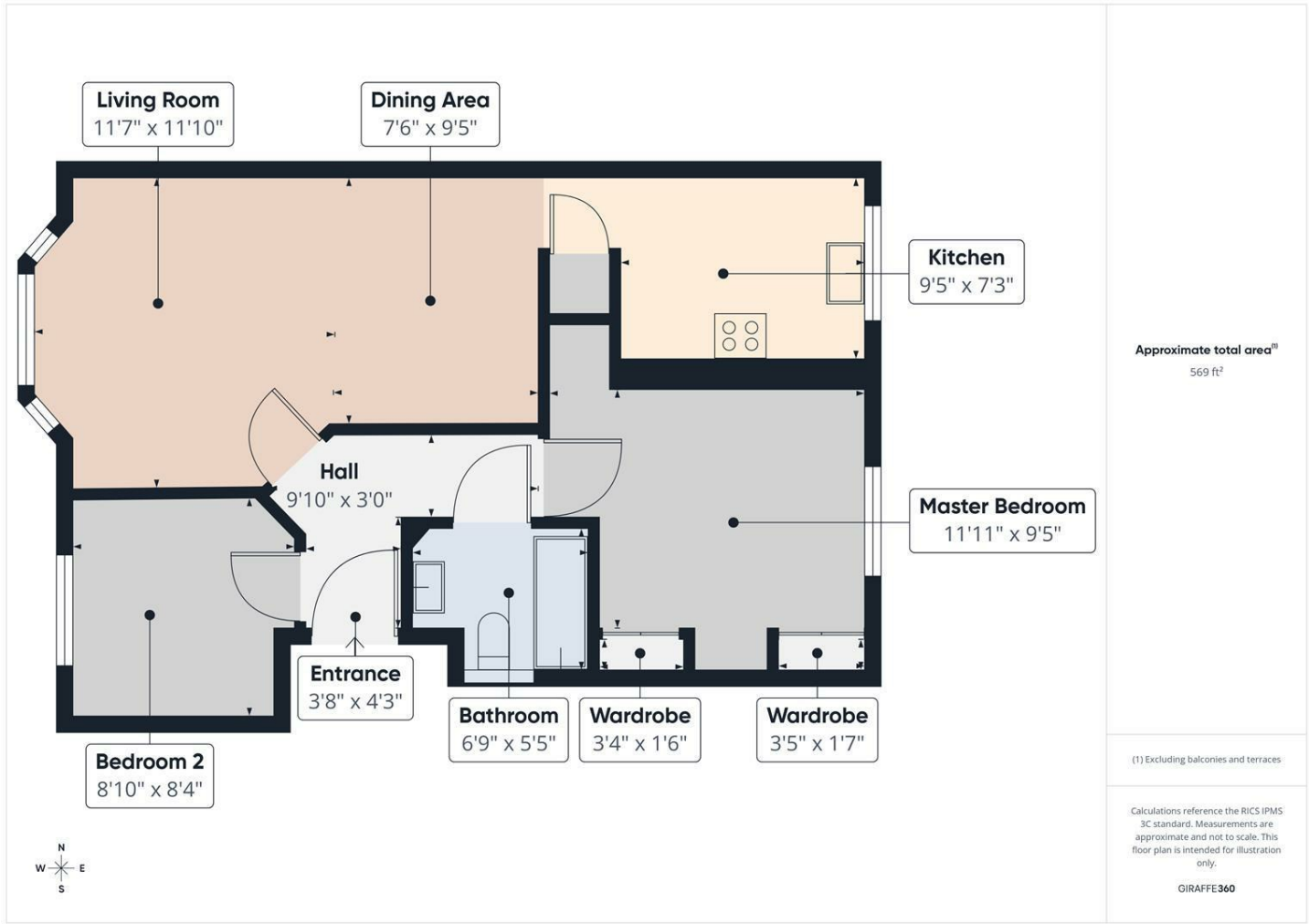




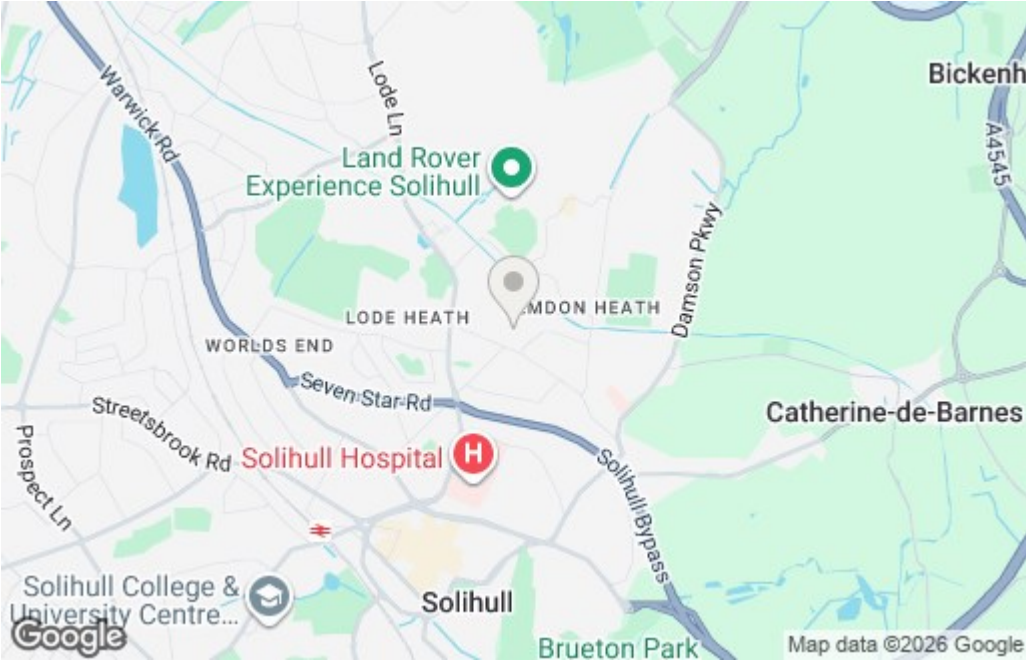




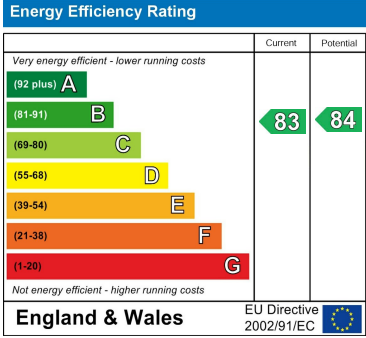
Floor Plan



Area Map



Energy Efficiency Graph



These particulars, whilst believed to be accurate are set out as a general outline only for guidance and do not constitute any part of an offer or contract. Intending purchasers should not rely on them as statements of representation of fact, but must satisfy themselves by inspection or otherwise as to their accuracy. No person in this firms employment has the authority to make or give any representation or warranty in respect of the property.

Zenith House, Highlands Road, Solihull, B90 4PD  
Tel: 01217112222 Email: info@solihullresidential.com www.solihullresidential.com