



## 20 Charterhouse Drive, B91 3FH

### £1,195 PCM

This immaculately presented furnished 1 bedroomed end of terrace home is part of a well-regarded development, offering not just a beautiful home but also an ideal location as it is within walking distance of Solihull Town Centre.

The property is adjacent to a charming communal green with a pond and resident waterfowl.

Solihull Town Centre hosts the renowned Touchwood complex offering residents easy access to upscale retail, dining, and entertainment options including a multi screen cinema theatre and library.

For leisure and outdoor activities, Tudor Grange Leisure Centre and Park are conveniently close by, providing residents with opportunities for recreation, exercise, and enjoying green spaces in the vicinity.

The property is conveniently located just 0.5 miles away from Widney Manor Railway Station which offers smooth connectivity between Birmingham Snow Hill and London Marylebone.

Entrance Hall ( with built in cupboard )

### Living Room

Spacious Living Room with Sofa Suite Coffee Table  
Television Unit and Flat Screen Television

### Bedroom

Double Bedroom with King Size Bed Bedside Units and  
Fitted Wardrobe with Full Length Mirrors.

### Bathroom

Fully tiled Bathroom with mains fed power shower.

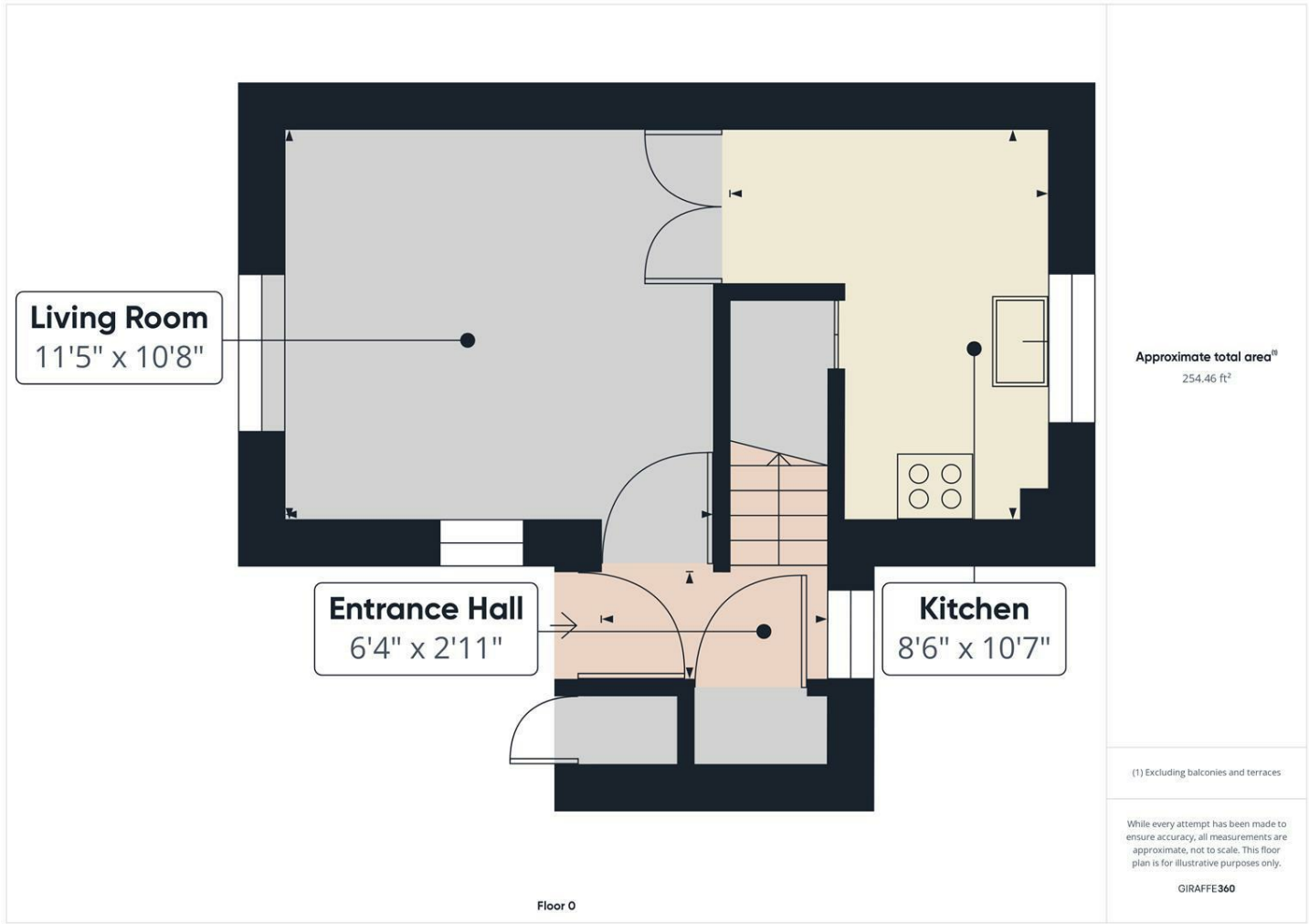
### Garden

Garden with Patio and Lawn

### Duck Pond

The property enjoys views over the green with its  
central duck pond which is an excellent area for  
meeting the neighbours

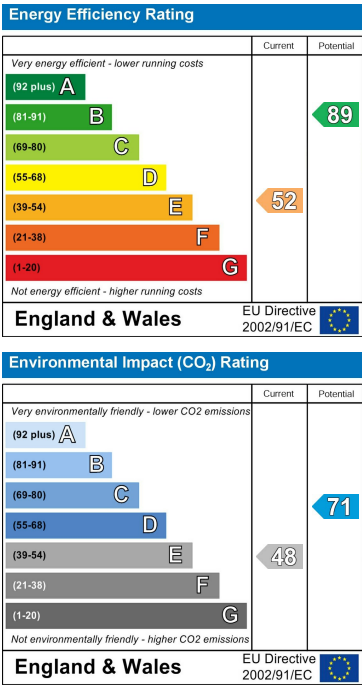
Floor Plan



Area Map



Energy Efficiency Graph



These particulars, whilst believed to be accurate are set out as a general outline only for guidance and do not constitute any part of an offer or contract. Intending purchasers should not rely on them as statements of representation of fact, but must satisfy themselves by inspection or otherwise as to their accuracy. No person in this firms employment has the authority to make or give any representation or warranty in respect of the property.