



10 Oakland Close Solihull, B91 2QB

This substantial unfurnished family home is immaculately presented and finished with premium fixtures and fittings creating a distinctly luxurious feel.

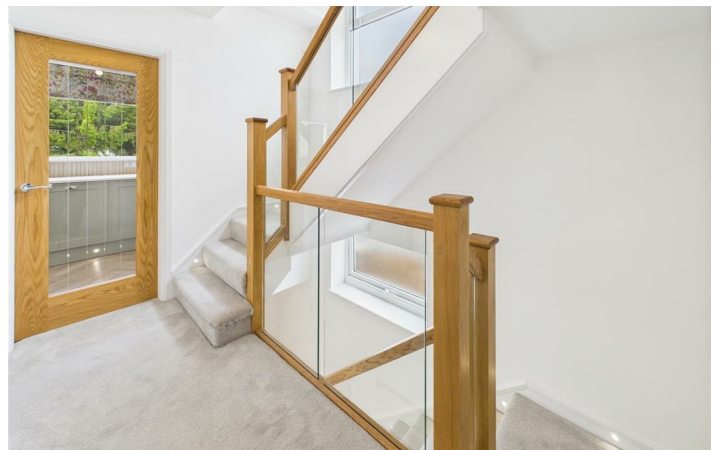
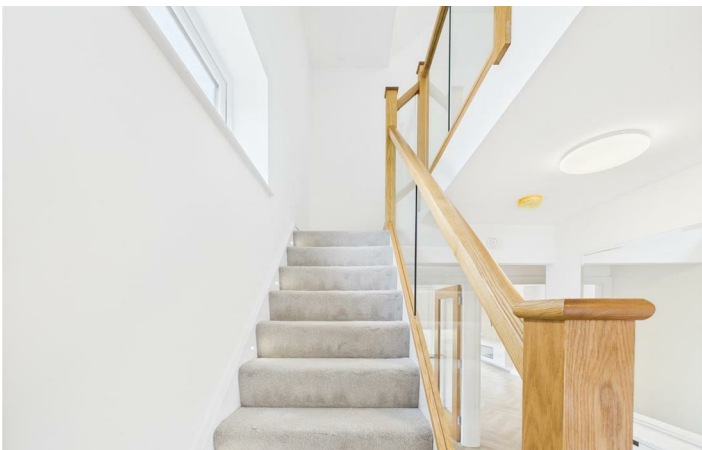
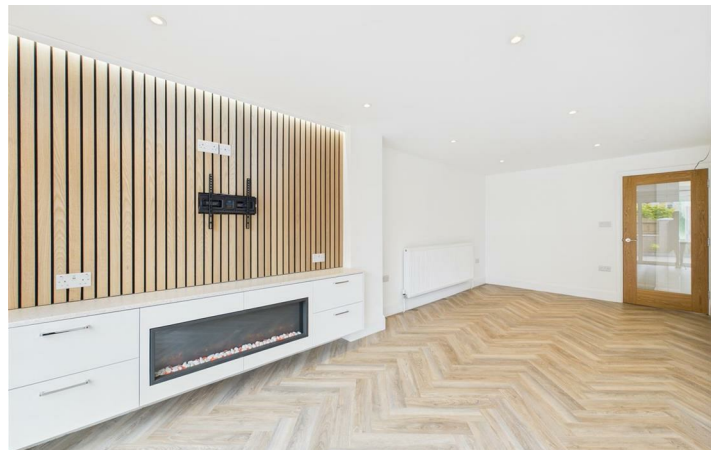
It is part of a select cul-de-sac community offering both seclusion and privacy.

The cul-de-sac setting ensures minimal traffic and noise, creating a tranquil and safe environment to enjoy.

Solihull Town Centre is located just 0.5 miles away and hosts the renowned Touchwood complex offering residents easy access to upscale retail, dining, and entertainment options including a multi-screen cinema theatre and library.

£2,995



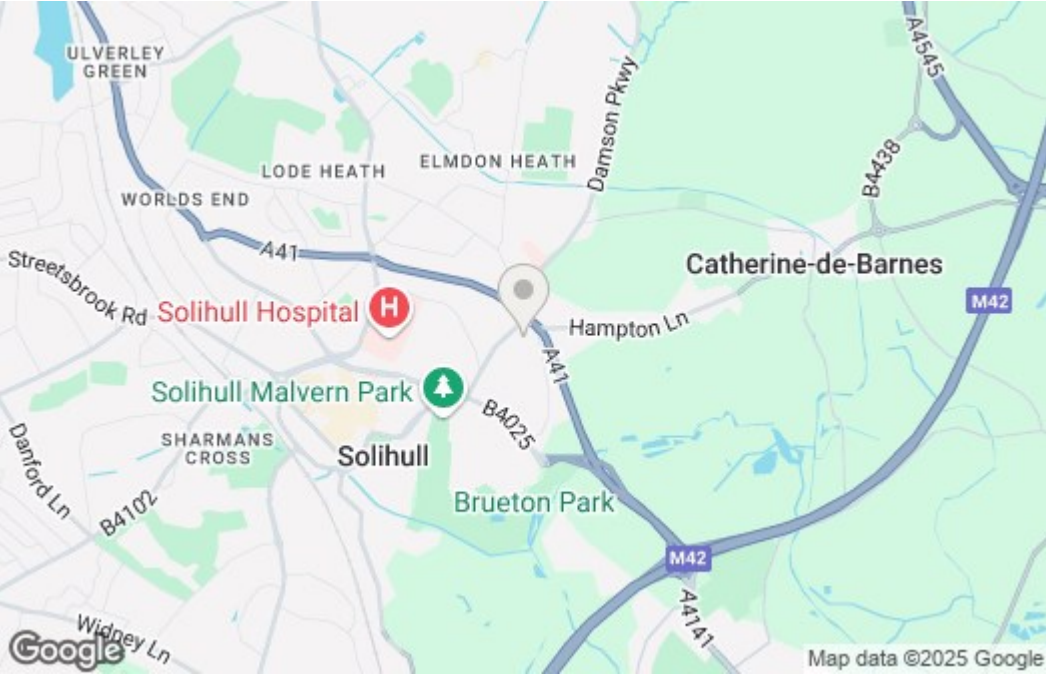




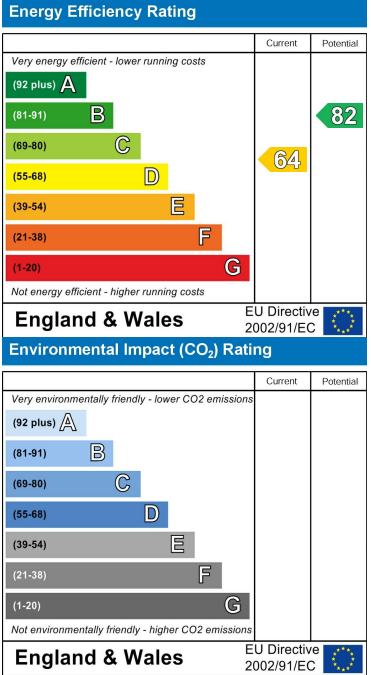
Floor Plan



Area Map



Energy Efficiency Graph



These particulars, whilst believed to be accurate are set out as a general outline only for guidance and do not constitute any part of an offer or contract. Intending purchasers should not rely on them as statements of representation of fact, but must satisfy themselves by inspection or otherwise as to their accuracy. No person in this firms employment has the authority to make or give any representation or warranty in respect of the property.