



20 Cornbury Grove Solihull, B91 1JG

This immaculately presented unfurnished family home is set back and part of a select cul-de-sac community offering seclusion and privacy.

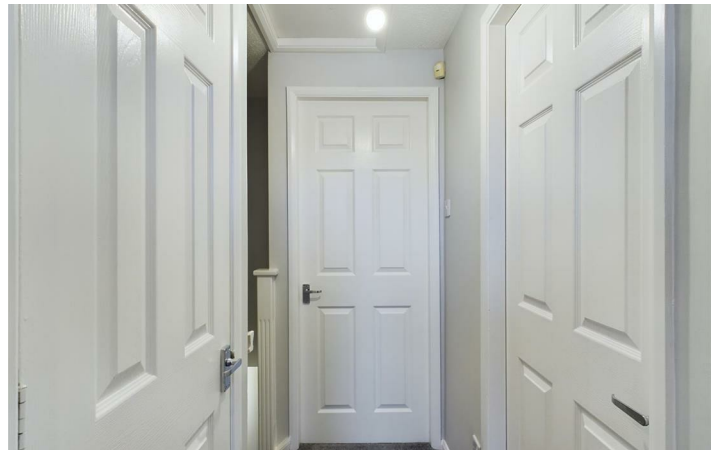
The cul-de-sac setting ensures minimal traffic and noise, creating a tranquil and safe environment for families.

This property overlooks Sharman Cross Wood which is a designated nature that serves as a beautiful tranquil space for wildlife to thrive and for you to enjoy.

For leisure and outdoor activities, Tudor Grange Leisure Centre and Park are conveniently close by, providing residents with opportunities for recreation, exercise,

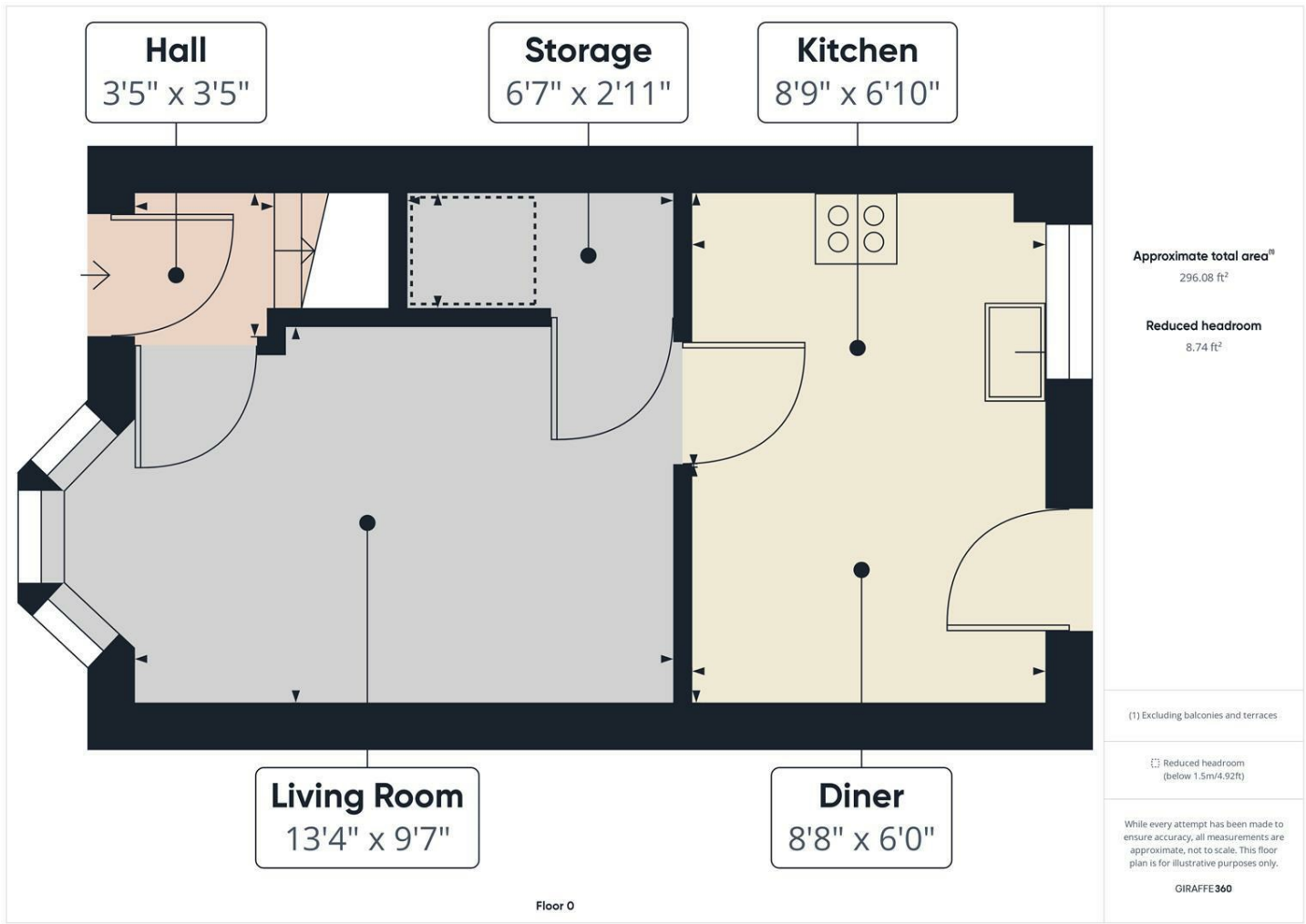
£1,295 PCM







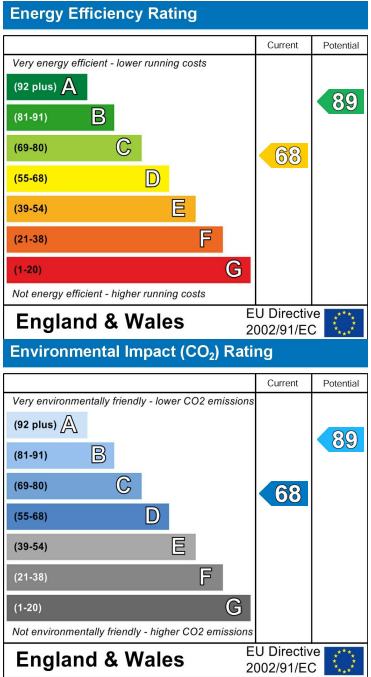
Floor Plan



Area Map



Energy Efficiency Graph



These particulars, whilst believed to be accurate are set out as a general outline only for guidance and do not constitute any part of an offer or contract. Intending purchasers should not rely on them as statements of representation of fact, but must satisfy themselves by inspection or otherwise as to their accuracy. No person in this firms employment has the authority to make or give any representation or warranty in respect of the property.