

# **41 Aqueduct Road** **Shirley, B90 1BT**

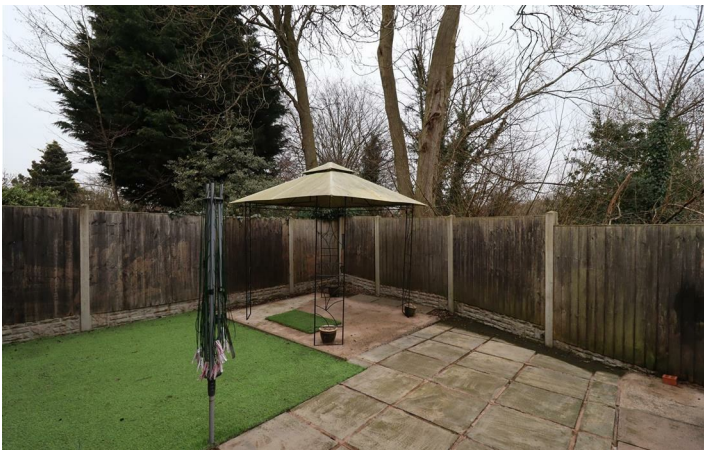
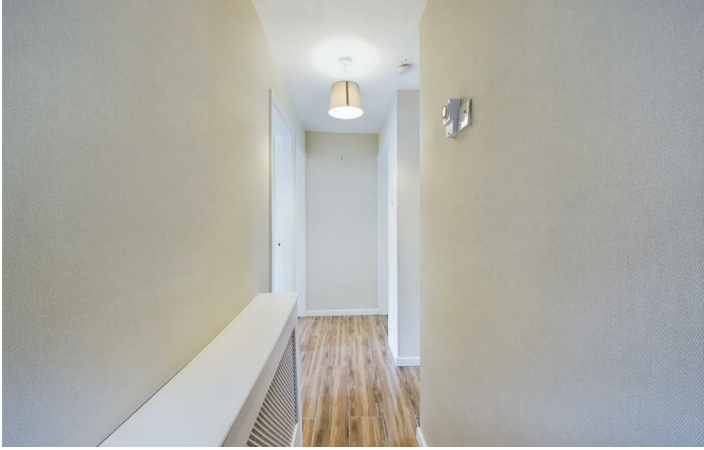
This deceptively spacious tastefully presented ground floor maisonette provides easy access to Shirley and Solihull Town Centres.

It offers a secluded garden with patio grass and canopy also has a shed.

**£1,095 Per Calendar Month**

 2
  1
  1
  D







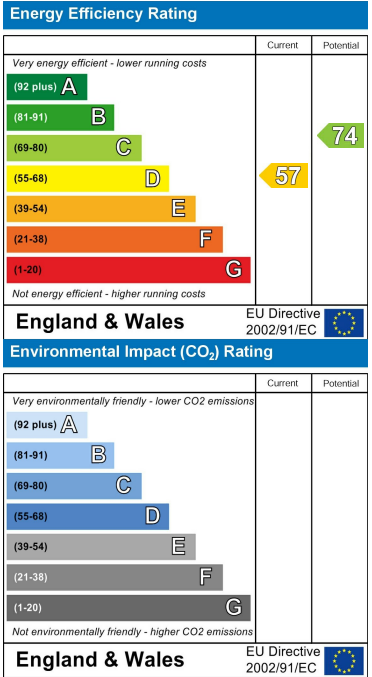
Floor Plan



Area Map



Energy Efficiency Graph



These particulars, whilst believed to be accurate are set out as a general outline only for guidance and do not constitute any part of an offer or contract. Intending purchasers should not rely on them as statements of representation of fact, but must satisfy themselves by inspection or otherwise as to their accuracy. No person in this firms employment has the authority to make or give any representation or warranty in respect of the property.