

# SOLIHULL RESIDENTIAL LETTINGS



## 30 Avery Court Wharf Lane Solihull, B91 2NG

Immaculately presented apartment set on prestigious development enjoys meaningful communal gardens and is walking distance of Solihull Town Centre.

This apartment is located on the 3rd floor (Sorry no lift) and overlooks a communal garden.

Entrance Hall leading Living Room

Separate Kitchen is well appointed with modern appliances

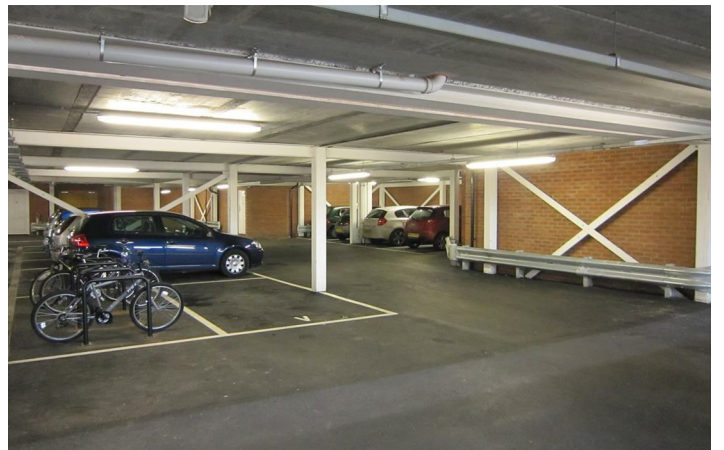
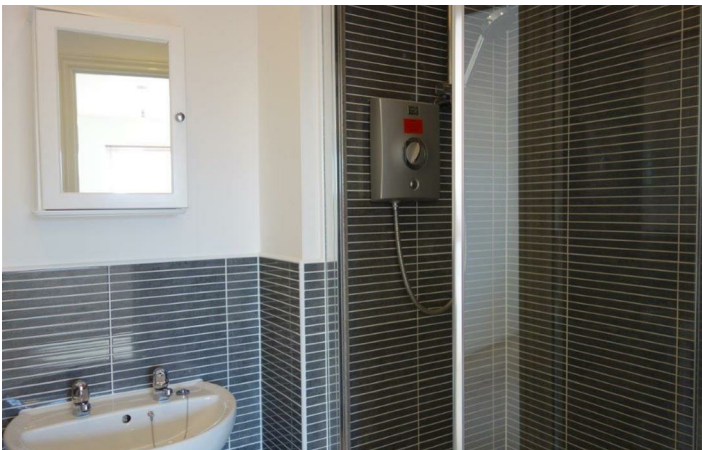
The spacious Master Bedroom has a fitted wardrobe and is larger than the 2nd Bedroom.

Both the Bathroom and Ensuite have excellent water pressure as they are mains fed.

Council Tax Band C

**£1,095 Per Month**





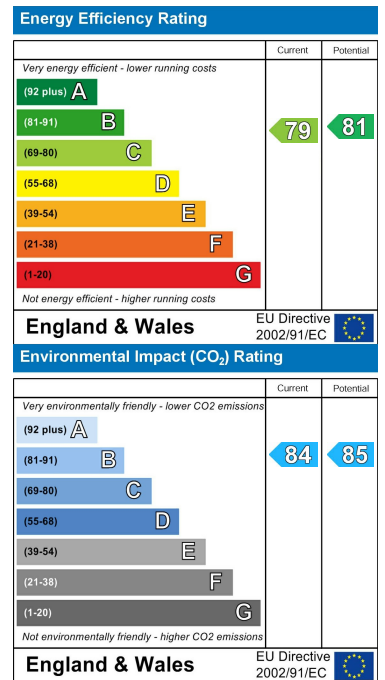


# Floor Plan

## Area Map



## Energy Efficiency Graph



These particulars, whilst believed to be accurate are set out as a general outline only for guidance and do not constitute any part of an offer or contract. Intending purchasers should not rely on them as statements of representation of fact, but must satisfy themselves by inspection or otherwise as to their accuracy. No person in this firm's employment has the authority to make or give any representation or warranty in respect of the property.

Zenith House, Highlands Road, Solihull, B90 4PD

Tel: 01217112222 Email: info@solihullresidential.com www.solihullresidential.com

