



57 LONDON ROAD SOUTH, MERSTHAM, SURREY, RH1 3AX
£875,000
FREEHOLD

Superb four bedroom detached home, with an impressive garden, located close to popular schools and excellent transport links.

Boasting four good size bedrooms, three with built in wardrobes and extensive living space, this detached family home is in a great location for local schools, mainline trains and access to the M25.

Through the front door the entrance porch opens into a spacious entrance hall, with under stairs cupboard and a door to a study, which could easily work as a ground floor bedroom.

There is a dual aspect living/dining room with original parquet flooring; a bay window to the front and double doors at the rear leading to an impressive underfloor heated conservatory with doors opening onto a substantial patio and 150ft South/East facing back garden. You have a generous fitted kitchen overlooking the rear garden and has an integrated dishwasher and plenty of storage. A door gives access to a large utility room and the downstairs WC.

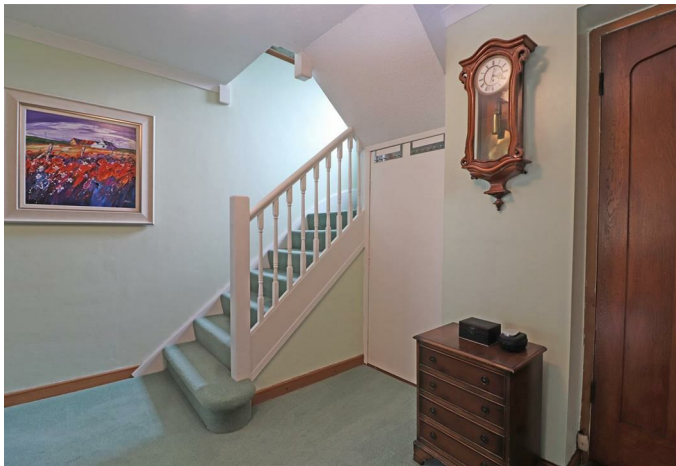
On the first floor there is a bright landing with a tall picture window which allows access to the partially boarded, fully insulated loft. You have four bedrooms, all of which will accommodate a double bed; a family bathroom and an en-suite shower room to the generous principal bedroom.

Outside, there is a driveway to the front for two cars with an EV charging point, and a well kept lawn with shrub boundaries. Side access leads you through to a superb 150ft garden which has been designed to offer minimal maintenance, with multiple patio areas to benefit from the sun at various points of the day, as well as a large summer house and a potting shed for those green fingered individuals.

Nearby is the historic village centre of Merstham, which dates back over 900 years and benefits from local shops and direct trains to central London and Gatwick, as well as being only a short drive to junction 8 of the M25.

- **SPACIOUS HOME**
- **THREE RECEPTION ROOMS**
- **FOUR BEDROOMS**
- **LARGE GARDEN**
- **COUNCIL TAX BAND: F**
- **NO CHAIN**
- **KITCHEN AND UTILITY ROOM**
- **BATHROOM AND ENSUITE**
- **EV CHARGER**
- **EPC RATING: C**





ROOM DIMENSIONS:

ENTRANCE HALL

11'10 x 7'9 (3.61m x 2.36m)

CLOAKROOM

4'8 x 4'1 (1.42m x 1.24m)

LOUNGE/DINING ROOM

23'10 x 14'5 max (7.26m x 4.39m max)

STUDY

10'7 x 8'9 (3.23m x 2.67m)

KITCHEN

13'11 x 8'5 (4.24m x 2.57m)

UTILITY ROOM

9'4(min) x 8'9 (2.84m(min) x 2.67m)

CONSERVATORY

13'6 x 10'6 (4.11m x 3.20m)

FIRST FLOOR

LANDING

11'1 x 6'1 (3.38m x 1.85m)

BEDROOM ONE

16'10 x 10'0 (5.13m x 3.05m)

ENSUITE SHOWER ROOM

9'4 x 7'8 (2.84m x 2.34m)

BEDROOM TWO

12'2 x 10'11 (3.71m x 3.33m)

BEDROOM THREE

11'0 x 10'11 + bay 12'8 max (3.35m x 3.33m + bay 3.86m max)

BEDROOM FOUR

10'11 x 8'6 (3.33m x 2.59m)

FAMILY BATHROOM

7'10 x 5'6 (2.39m x 1.68m)

GAS CENTRAL HEATING

DOUBLE GLAZED WINDOWS

LARGE GARDEN

OFF ROAD PARKING FOR TWO CARS





woodlands

OnTheMarket.com

rightmove

Zoopla



propertymark

| Energy Efficiency Rating | | |
|---|-------------------------|-----------|
| | Current | Potential |
| Very energy efficient - lower running costs | | |
| (92 plus) A | | |
| (81-91) B | | |
| (69-80) C | 70 | 79 |
| (55-68) D | | |
| (39-54) E | | |
| (21-38) F | | |
| (1-20) G | | |
| Not energy efficient - higher running costs | | |
| England & Wales | EU Directive 2002/91/EC | |

To view this property please call 01737 771777

www.woodlands-estates.co.uk

These particulars are set out as a general outline for the guidance of intending purchasers or lessees and do not constitute any part of an offer or contract. No person in the employment of the above named agents has any authority to make or give any representation or warranty whatsoever in relation to this property. If there is any point which is of particular interest, please contact our office and we will be pleased to check the information. The mention of any appliances and/or services does not imply they are in full and efficient working order.