

Flat A Old Stable Lodge, 9 Mill Street, Redhill, Surrey, RH1 6PA
£240,000
Leasehold - Share of Freehold

***** TOP FLOOR, CONVERSION APARTMENT WITH A SHARE OF THE FREEHOLD, OFF ROAD PARKING, AND GREAT VIEWS *****

Located opposite Redhill common, and within easy reach of local shops and pubs, this top floor property is well situated and is also around half a mile to Redhill town centre.

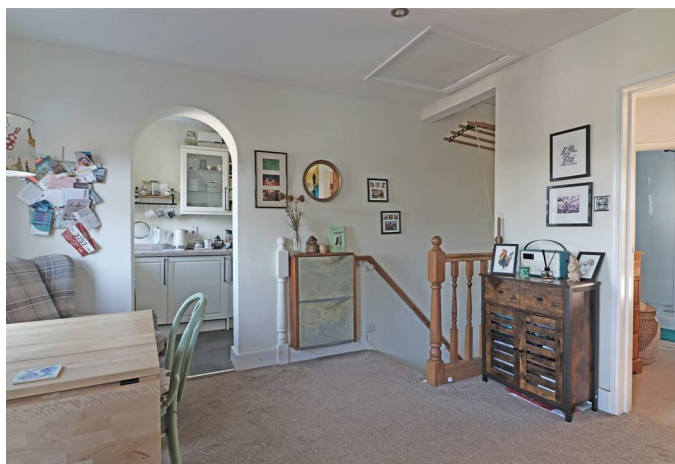
On the upper ground floor there is a private entrance which opens to a hallway, from there you have stairs to the top floor. At the top of the stairs is a bright, open plan living space with two rear facing windows that provide far reaching views. Off the lounge there is a modern kitchen, with the same superb views. Then to the front you have a double bedroom overlooking the woods, and en-suite shower room with a double glazed window to the side.

The property benefits from off road parking for one car, there is also parking on the street itself, and you have a private garden area to the side, accessed via some steps.

Nearby there is a handy shop and a pharmacy, in addition there are a number of local pubs, including the community owned Garibaldi. Across the road is Redhill common, which has a stunning, elevated open area that affords superb southerly views.

Redhill town and station are a little over half a mile away, there you have a great range of shops, a multi screen cinema, and direct trains to central London.

- GREAT VIEWS
- LOUNGE
- PRIVATE ENTRANCE
- OFF ROAD PARKING
- COUNCIL TAX BAND: C
- SHARE OF FREEHOLD
- MODERN KITCHEN
- GARDEN AREA
- SHOPS NEARBY
- EPC RATING: E



ROOM DIMENSIONS:

PRIVATE FRONT DOOR:

ENTRANCE HALL
 9'0 x 2'11 (2.74m x 0.89m)

LOUNGE
 15'1 x 11.0 (4.60m x 3.35m.0.00m)

KITCHEN
 10'11 x 5'4 (3.33m x 1.63m)

DOUBLE BEDROOM
 11'0 x 10'8 (3.35m x 3.25m)

SHOWER ROOM
 6'5 x 5'6 (1.96m x 1.68m)

GAS CENTRAL HEATING

DOUBLE GLAZED WINDOWS

PRIVATE GARDEN

OFF ROAD PARKING SPACE

SHARE OF FREEHOLD

YEARS REMAINING ON LEASE: 103

GROUND RENT: £0

SERVICE CHARGES: On an as & when basis

