

Aquarius Homes



Flat 1, Francis House The Avenue

Combe Down, Bath, BA2 5EH

£1,050 PCM



Flat 1, Francis House The Avenue

Combe Down, Bath, BA2 5EH

£1,050 PCM



Kitchen/Diner/Lounge

Open Plan Carpeted to Living Areas, Vinyl to Kitchen Area. Pendant Light Fittings. Door to Courtyard/Entrance. Opening to Inner Hall. Modern Fitted Kitchen with Integrated Oven and Hob, Extractor Hood, Rolled Edge Worktops, Integrated Fridge/Freezer, Base and Wall Units, Cupboard Housing Central Heating Boiler.

Bedroom 1

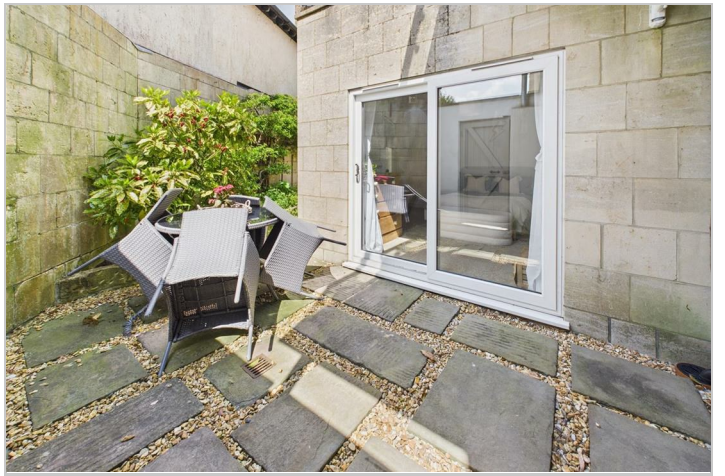
Door from Inner Hallway, UPVC DG Patio Door to Courtyard, Radiator, Pendant Light Fitting, Carpet Flooring, UPVC DG Window to Rear.

Shower Room

Modern White Suite Comprising, Corner Shower Cubicle, Pedestal Wash Hand Basin, Low Level WC, Mirror Above Wash Hand Basin, Wall Cupboard, Cupboard Housing Washing Machine. Vinyl Flooring, Central Light Fitting.

Courtyard

Private Paving and Gravel Courtyard Garden with Raised Flower Bed and Gate to Side.



Road Map



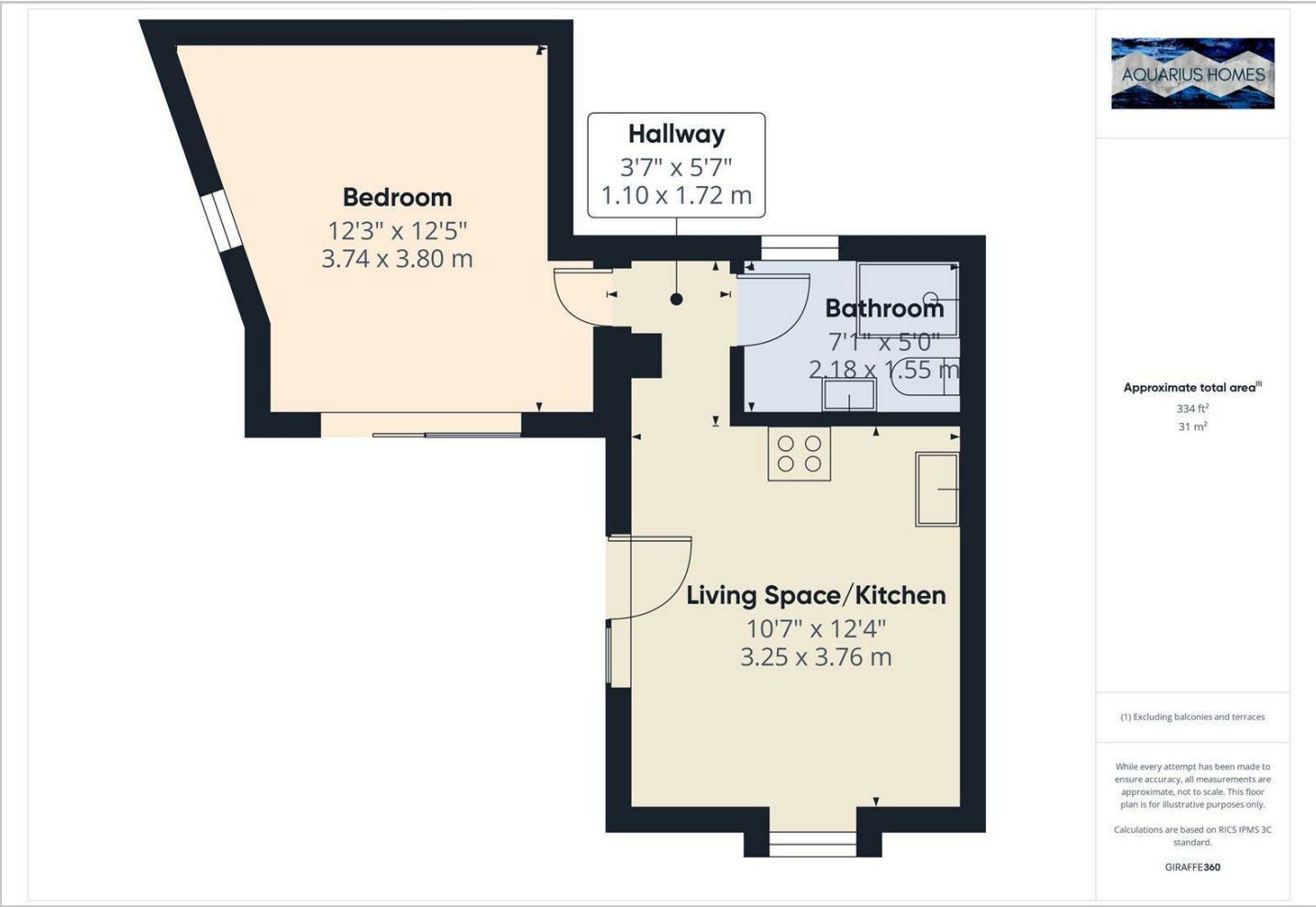
Hybrid Map



Terrain Map



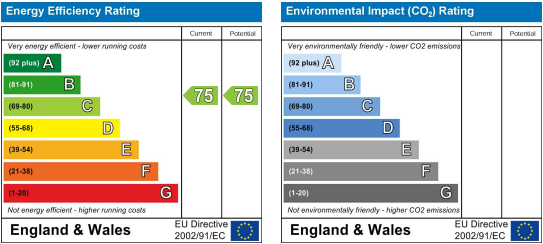
Floor Plan



Viewing

Please contact our Aquarius Homes Office on 01225 840007 if you wish to arrange a viewing appointment for this property or require further information.

Energy Efficiency Graph



These particulars, whilst believed to be accurate are set out as a general outline only for guidance and do not constitute any part of an offer or contract. Intending purchasers should not rely on them as statements of representation of fact, but must satisfy themselves by inspection or otherwise as to their accuracy. No person in this firm's employment has the authority to make or give any representation or warranty in respect of the property.