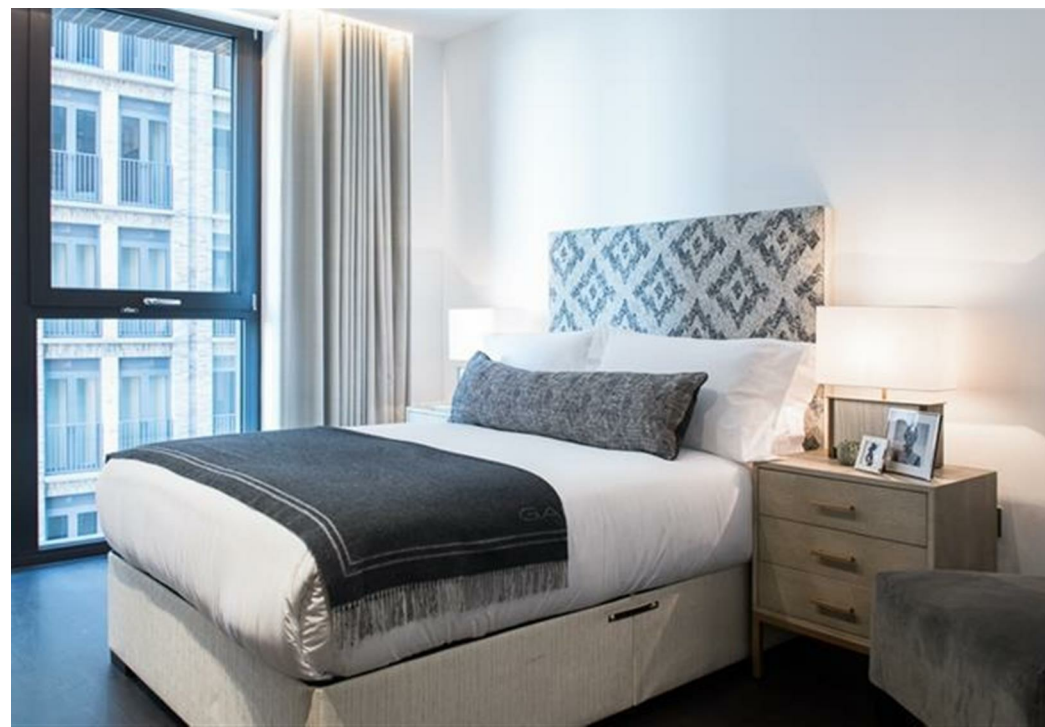
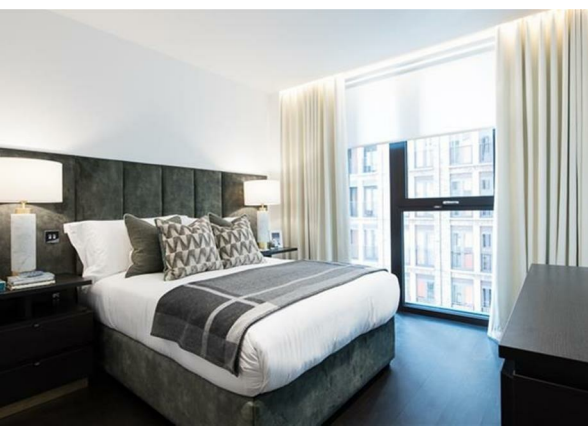
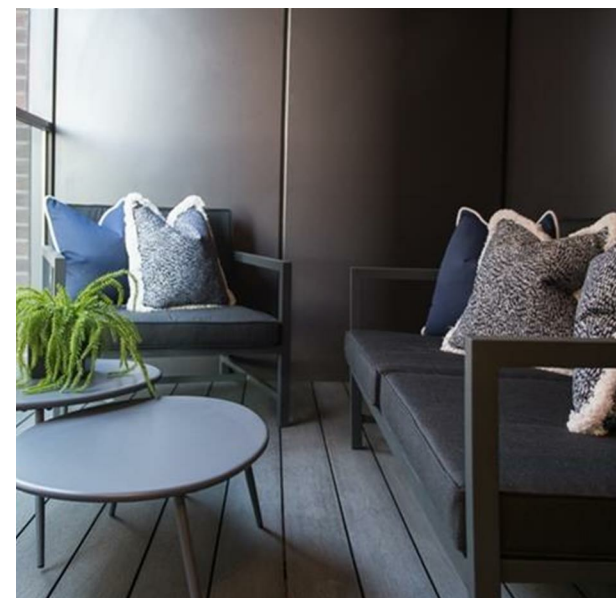


35, Thornes House Charles Clowes Walk, London, Greater London, SW11  
7AG

61,175 Per Week

COMPLETION  
SALES & LETTINGS



# 35, Thornes House Charles Clowes Walk, London, Greater London, SW11 7AG

## £1,175 Per Week

### Council Tax Band: F

Welcome to Thornes House, a stunning two-bedroom luxury apartment located on the eighth floor in the desirable SW11 area. Spanning an impressive 902 square feet, this modern flat offers a perfect blend of comfort and style, making it an ideal home for those seeking a sophisticated urban lifestyle.

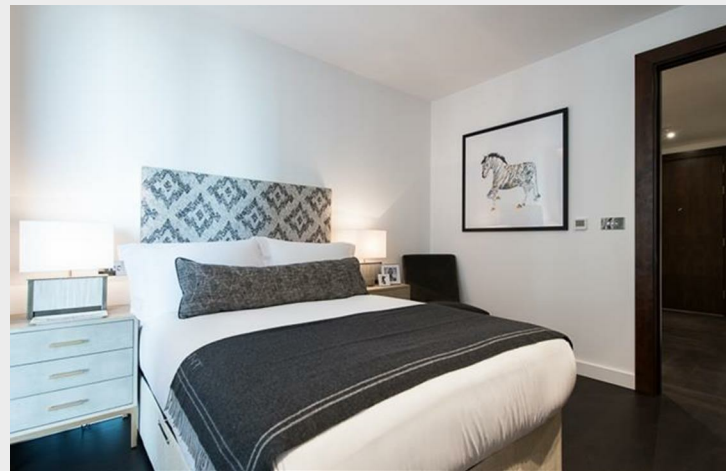
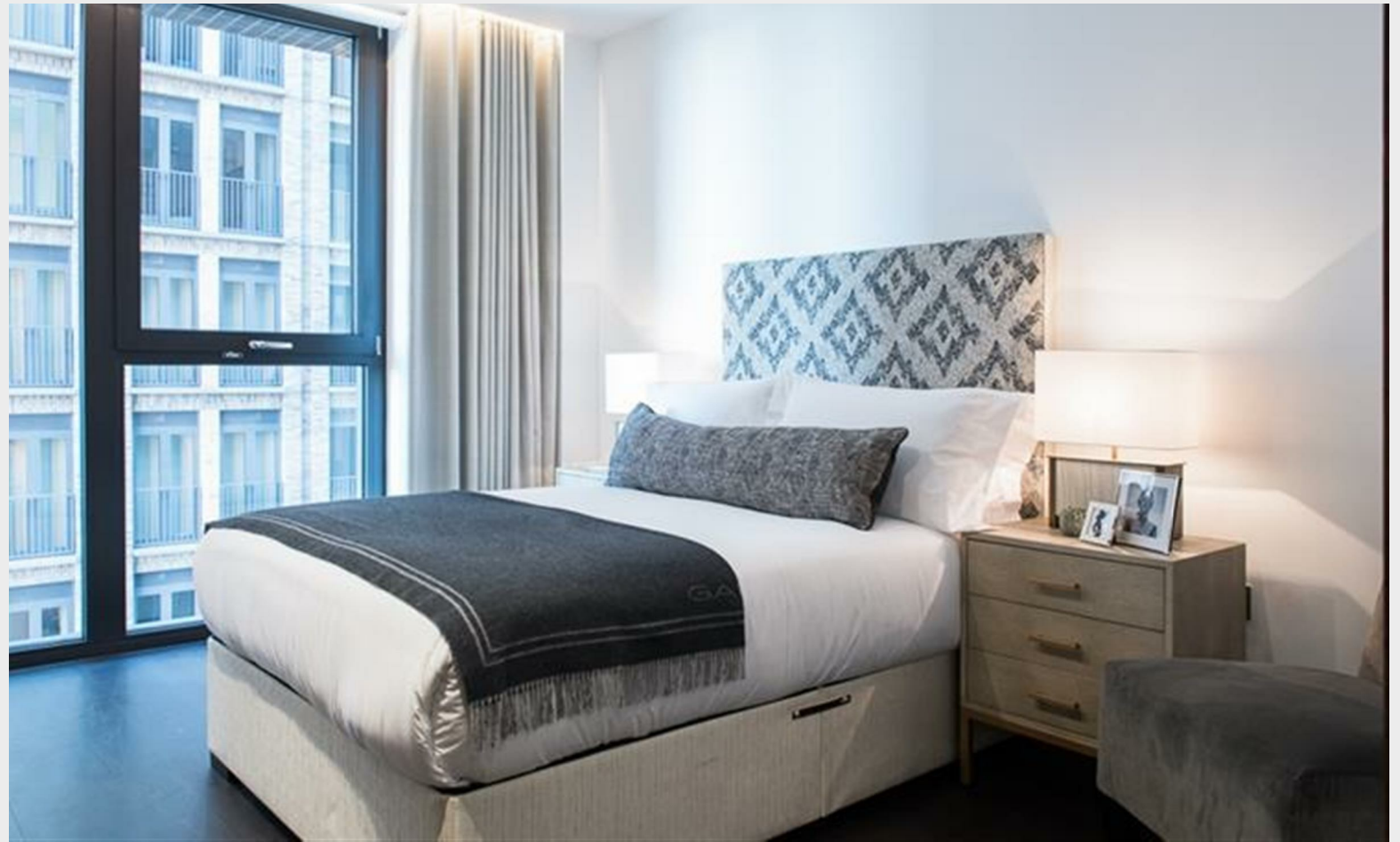
As you enter the apartment, you are greeted by a spacious reception room that provides a warm and inviting atmosphere, perfect for both relaxation and entertaining guests. The large windows allow natural light to flood the space, enhancing the overall sense of openness and tranquillity.

The property boasts two well-appointed bedrooms, each designed with comfort in mind. The master bedroom features an en-suite bathroom, providing a private sanctuary for your daily routines. The second bedroom is equally spacious and versatile, suitable for guests or as a home office. In addition, there is a second bathroom, ensuring convenience for all residents.













337 Forest Road

London

E17 5JR

02085277007

enquiries@completion.co.uk

completion.co.uk



| Energy Efficiency Rating                                  |           |           |
|---|-----------|-----------|
|   | Current   | Potential |
| Very energy efficient - lower running costs               |           |           |
| (92 plus) <b>A</b>  |           |           |
| (81-91) <b>B</b>  | <b>87</b> | <b>87</b> |
| (69-80) <b>C</b>  |           |           |
| (55-68) <b>D</b>  |           |           |
| (39-54) <b>E</b>  |           |           |
| (21-38) <b>F</b>  |           |           |
| (1-20) <b>G</b>   |           |           |
| Not energy efficient - higher running costs               |           |           |
| England & Wales<br><small>EU Directive 2002/91/EC</small> |           |           |