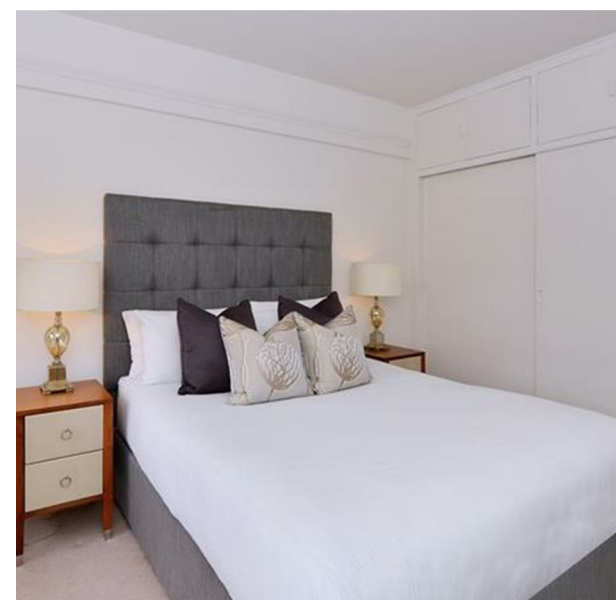


43 Pelham Court, Fulham Road, London, Greater London, SW3 6SH
£930 Per Week

COMPLETION
SALES & LETTINGS



A modern bathroom with white tiles, a glass shower enclosure, a white pedestal sink, and a mirror.

43 Pelham Court, Fulham Road, London, Greater London, SW3 6SH

£930 Per Week

Council Tax Band: C

Nestled in the heart of Chelsea, this modern two-bedroom apartment at Pelham Court offers a delightful blend of comfort and style. Spanning an impressive 709 square feet, this flat is perfect for those seeking a contemporary living space in one of London's most desirable areas.

Upon entering, you are greeted by a spacious reception room that provides an inviting atmosphere, ideal for both relaxation and entertaining. The well-appointed kitchen complements the living area, making it a practical space for culinary enthusiasts. The two bedrooms are generously sized, ensuring ample room for rest and personalisation, while the bathroom is designed with modern fixtures for your convenience.

The property is situated in a vibrant neighbourhood, surrounded by an array of shops, cafes, and cultural attractions, making it a perfect choice for those who appreciate the lively lifestyle Chelsea has to offer. With a rental price of £890 per week, this apartment presents an excellent opportunity for anyone looking to









337 Forest Road

London

E17 5JR

02085277007

enquiries@completion.co.uk

completion.co.uk

Energy Efficiency Rating		
	Current	Potential
Very energy efficient - lower running costs		
(92 plus) A		
(81-91) B		
(69-80) C		
(55-68) D		
(39-54) E		
(21-38) F		
(1-20) G		
Not energy efficient - higher running costs		
England & Wales EU Directive 2002/91/EC		