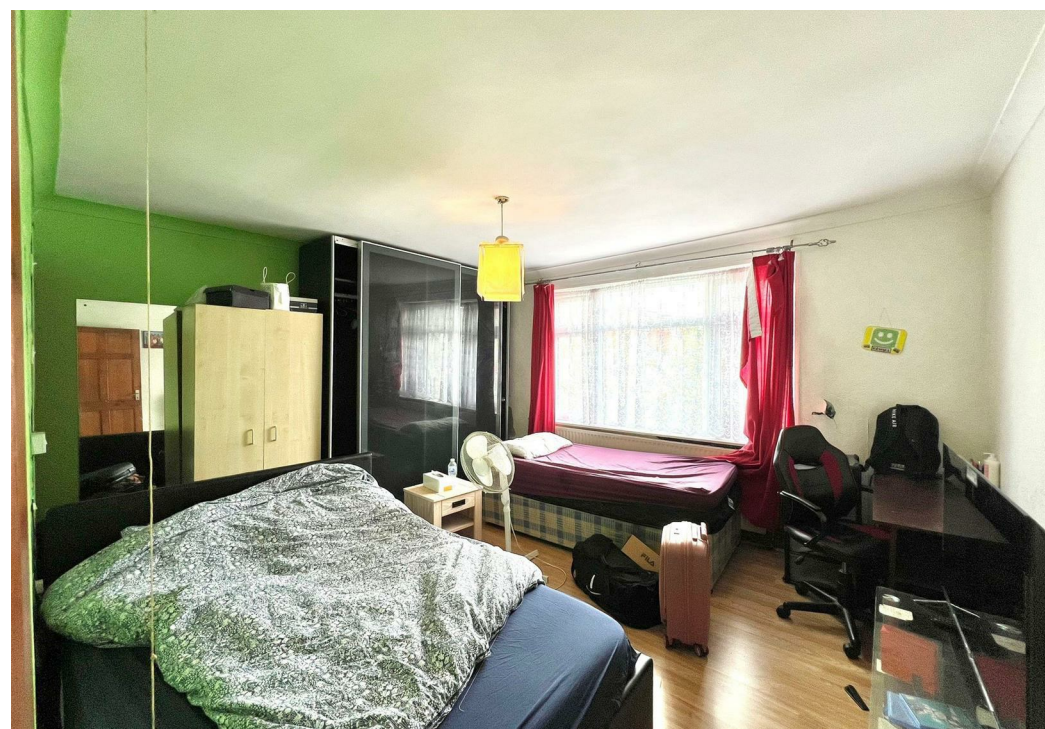
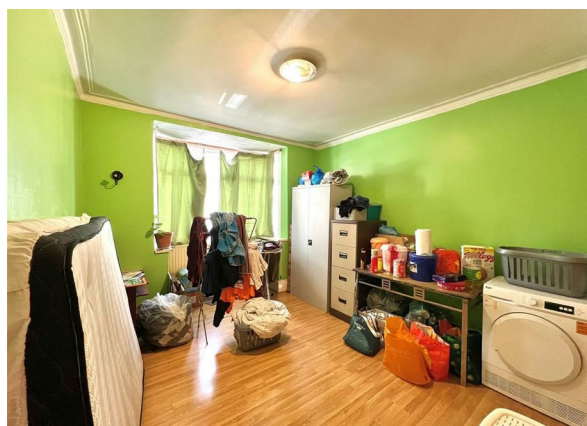
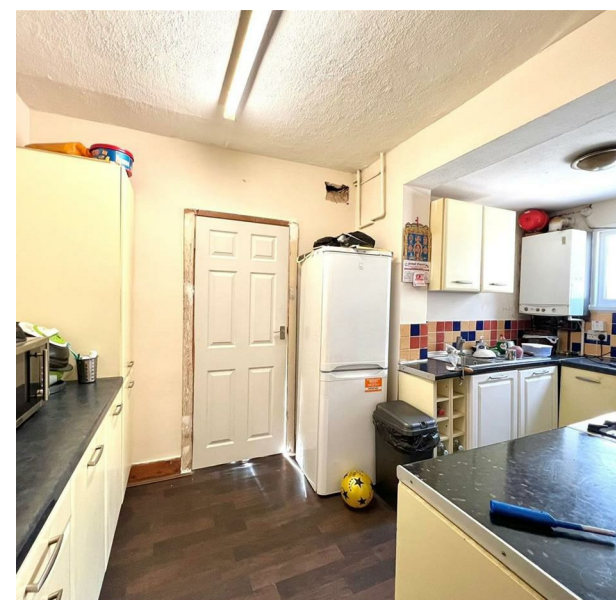
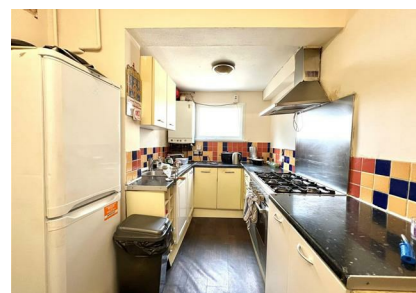


60 Woodville Road, London, E17 7ER  
£2,500 Per Annum

COMPLETION  
SALES & LETTINGS





60 Woodville Road, London, E17 7ER

£2,500 Per Annum

Council Tax Band: C

Nestled in the vibrant area of Walthamstow, this charming end terrace house on Woodville Road offers a delightful blend of character and modern living. Available to let at £2,500 per calendar month, this spacious property boasts an impressive 1,313 square feet of living space, making it an ideal home for families or professionals seeking comfort and convenience.

The house features two inviting reception rooms, perfect for entertaining guests or enjoying quiet evenings with family. The well-proportioned three bedrooms provide ample space for relaxation and rest, while the bathroom is designed to cater to your everyday needs.

Built in 1900, this property retains a sense of historical charm, complemented by contemporary touches that enhance its appeal. The end terrace position allows for additional privacy and natural light, creating a warm and welcoming atmosphere throughout.















337 Forest Road  
 London  
 E17 5JR  
 02085277007  
[enquiries@completion.co.uk](mailto:enquiries@completion.co.uk)  
[completion.co.uk](http://completion.co.uk)

