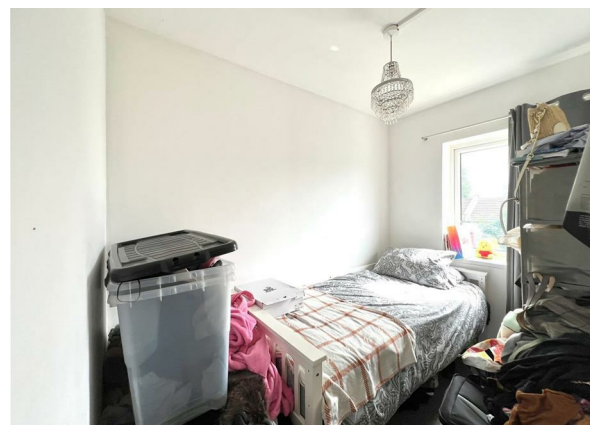
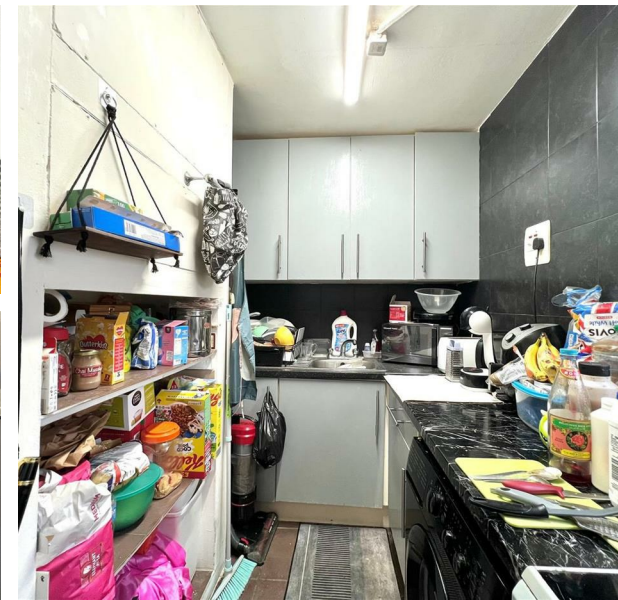


Flat 6, 169, Birch Court Skeltons Lane, London, E10 5DB
Price Guide £325,000

COMPLETION
SALES & LETTINGS



Flat 6, 169, Birch Court Skeltons Lane, London, E10 5DB

Price Guide £325,000

Council Tax Band: B

Nestled in the vibrant area of Leyton, this charming two-bedroom flat on Skeltons Lane offers a delightful opportunity for both first-time buyers and investors alike. Spanning an efficient 455 square feet, the property is designed to maximise space and comfort.

Upon entering, you are greeted by a welcoming reception room, perfect for relaxation or entertaining guests. The flat features two well-proportioned bedrooms, providing ample space for rest and personalisation. The bathroom is conveniently located, ensuring practicality for daily living.

This flat is ideally situated in a lively neighbourhood, with local amenities, parks, and excellent transport links just a stone's throw away. Leyton is known for its community spirit and offers a variety of shops, cafes, and recreational facilities, making it an attractive place to call home.

Whether you are looking to invest in a rental property or seeking a comfortable residence, this flat on Skeltons Lane presents a wonderful opportunity. With its appealing layout and prime location, it is sure to attract interest. Do not miss the chance to view this delightful property.



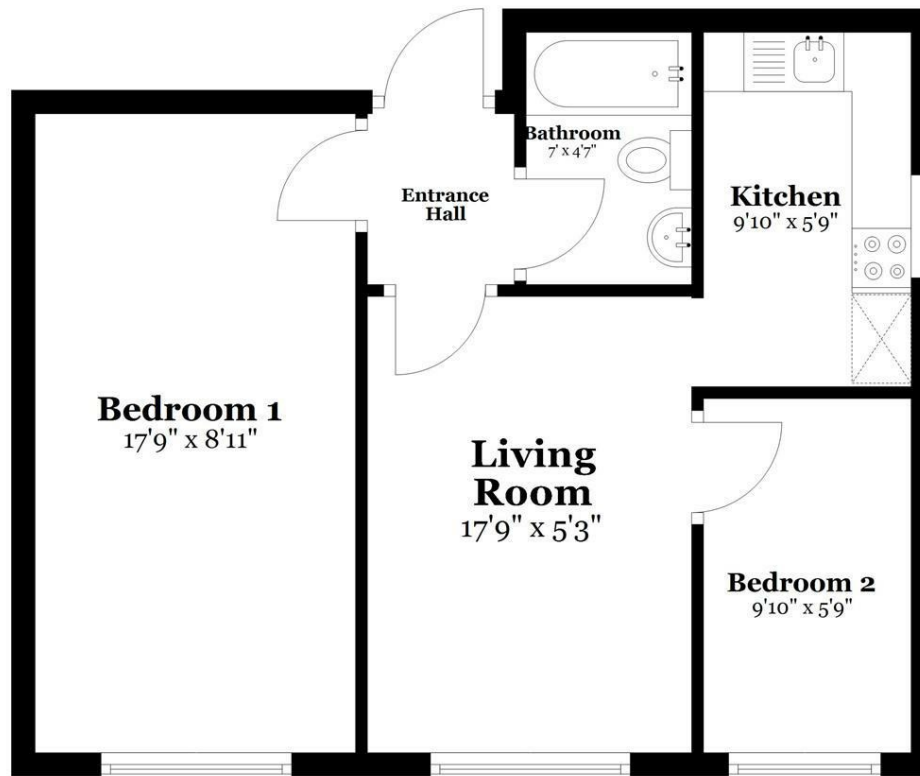






Ground Floor

Approx. 454.9 sq. feet



Total area: approx. 454.9 sq. feet

337 Forest Road

London

E17 5JR

02085277007

enquiries@completion.co.uk

completion.co.uk

Energy Efficiency Rating		
	Current	Potential
Very energy efficient - lower running costs		
(92 plus) A		
(81-91) B		
(69-80) C		76
(55-68) D		
(39-54) E	47	
(21-38) F		
(1-20) G		
Not energy efficient - higher running costs		
EU Directive 2002/91/EC		
England & Wales		