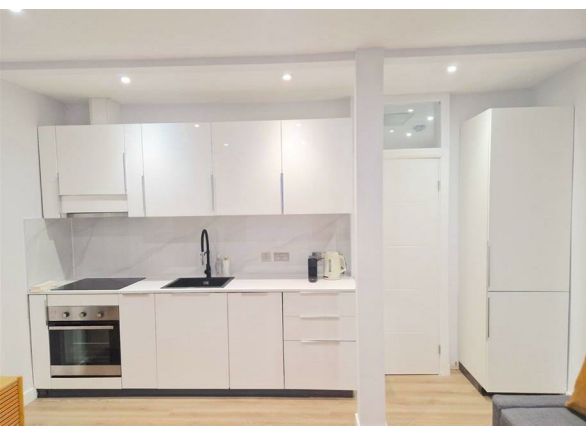
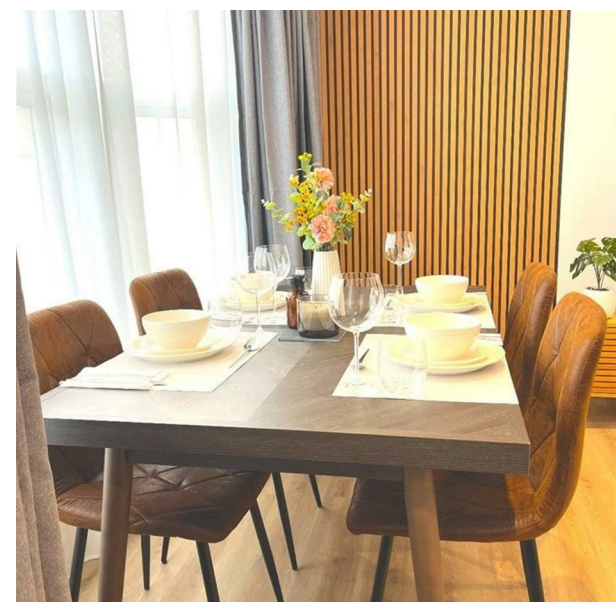



131 Blackhorse Lane, London, E17 6DJ  
£2,300 (From) Per Month

**COMPLETION**  
SALES & LETTINGS







# 131 Blackhorse Lane, London, E17 6DJ

## £2,300 (From) Per Month

### Council Tax Band: B

Nestled in the vibrant area of Walthamstow, this charming two-bedroom upper floor flat on Blackhorse Lane offers a delightful living experience. With a monthly rental price of £2300, this property is perfect for those seeking a comfortable and stylish home in a bustling neighbourhood.

Spanning an area of 538 square feet, the flat features a well-proportioned reception room that provides a welcoming space for relaxation and entertainment. The two bedrooms are thoughtfully designed, offering ample space for rest and personalisation. The bathroom is modern and functional, catering to all your daily needs.

The location is a significant highlight, with Walthamstow's rich array of amenities, including shops, cafes, and parks, just a stone's throw away. The area is well-connected, making it easy to commute to central London and beyond.

This property is ideal for professionals or small families looking for a blend of comfort and convenience in a lively community. Don't miss the opportunity to make this lovely flat your new home.











337 Forest Road  
 London  
 E17 5JR  
 02085277007  
[enquiries@completion.co.uk](mailto:enquiries@completion.co.uk)  
[completion.co.uk](http://completion.co.uk)

