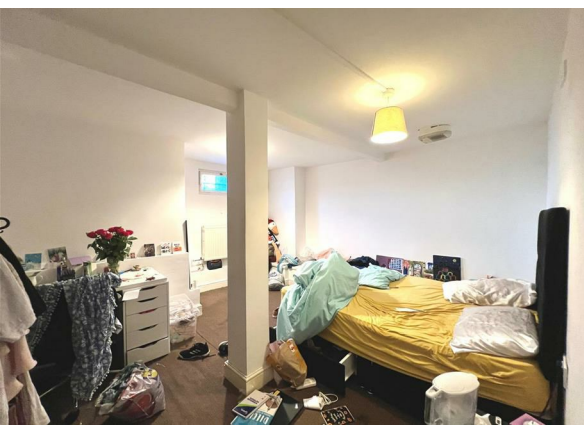
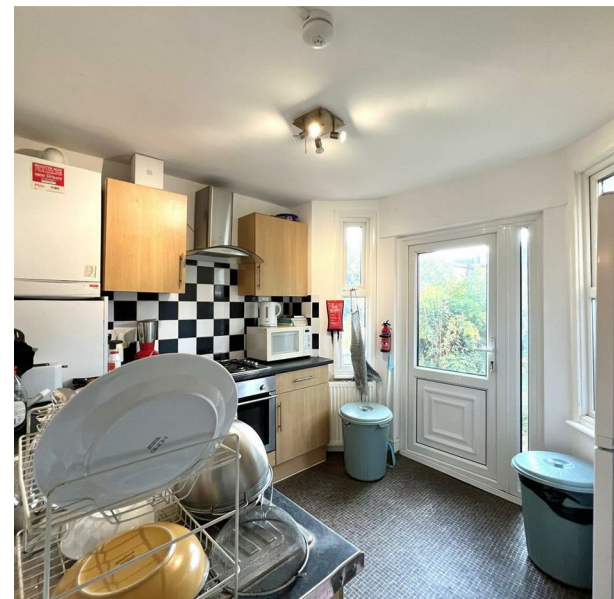


35 Folkestone Road, London, Greater London, E17 9SD
£2,500 Per Month

COMPLETION
SALES & LETTINGS



35 Folkestone Road, London, Greater London, E17 9SD

£2,500 Per Month

Council Tax Band: D

Nestled in the vibrant area of Walthamstow, E17, this charming three-bedroom split level flat is now available to let at a competitive rate of £2,500 per calendar month. This delightful property boasts a spacious reception room, perfect for both relaxation and entertaining guests.

The three well-proportioned bedrooms offer ample space for families or professionals seeking a comfortable living environment. The house features a modern bathroom, ensuring convenience and style for everyday living.

Victorian architecture is celebrated for its character and charm, and this property is no exception. With its period features and inviting atmosphere, it provides a warm and welcoming home.







337 Forest Road
 London
 E17 5JR
 02085277007
enquiries@completion.co.uk
completion.co.uk

